

BRITISH COLUMBIA  
COMMUNITY FOREST  
ASSOCIATION

Annual Update



BCCFA

Formed in 2002

Grassroots Non Profit Society

Now over 50 member communities and counting



Mission

Promote and support the practice and expansion of sustainable community forest management in British Columbia.



Membership based organization



Strategic Planning

- Annual Conferences
- Members Surveys
- Board Strategic Planning



## The Year in Review

- President's Report 2011: Board and Staff Activities
  - Core Activities
    - Conference calls, e-mails, face-to-face meetings
  - Special Projects
    - Land Based Investment Program
    - Funds raised




## Committees

- Expansion Committee
- Forest Policy
- Marketing & Branding
- Value Added Project
- First Nations Dialogue
- Extension Project
- Finance Committee
- Land Based Investment Committee



## Strategic Priorities

- Expansion
- Policy
- Adding Value
- Communications & Extension
- First Nations Dialogue



## Policy

### Community Forest Program Expansion

- Advocating for the expansion of the program
  - New CFAs
  - Increasing the size of many existing CFAs

**Policy**

---

**Community Forest Program Expansion**

- Expansion Committee with joint coordination by Ministry of Forests, Lands & Natural Resource Operations and BCCFA.
- Menu of options has been identified

**Policy**

---

**Expansion Committee Workplan**

- Research each option
- Identify actions needed (i.e. leg change)
- Assess viability
- Produce a “package for expansion”
- Present to membership
- Vigorously pursue necessary changes
- Implement on case by case basis

**Policy**

---

**Administrative Streamlining**

- CF Program Joint Working Group
- Monthly Meetings
- Action list

**Policy**

---

**Administrative Streamlining Priorities**


- Single Cutting Permit
- Minor Harvesting
- Waste Assessments
- Community Forest Regulation

**Policy**

---

**Ongoing activities**

- Provincial FRPA Implementation Team
- Biomass Tenures
- Land Based Investment Program



Open Burning Smoke Control Regulation – Grant Thompson

## Policy

---

### Open Burning Smoke Control Regulation

- Proposed regulatory changes may negatively impact CFAs.
- Open burning is severely restricted in the Primary Smoke Sensitivity Zone.
- Contrary to fuel management objectives.
- Seeking input.



Adding Value: Marketing – Robin Hood

## Adding Value

---

### Marketing and Branding

- Early work on DVD and new brand
- New banners
- Next steps?
- Traceability Pilot Project with Ecotrust: [thisforest.net](http://thisforest.net) (explained in Partners and Projects Panel)



Value Added Project – Kevin Davie

## Adding Value

---

### Value Added Project

- “Bridges: Linking Resources for Community Forests”.
- Rhoni Whyard to present in Partners and Projects.

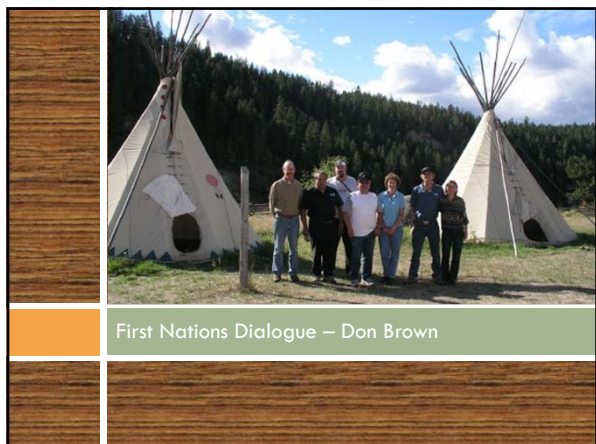
## Adding Value

---

### Bridges Project

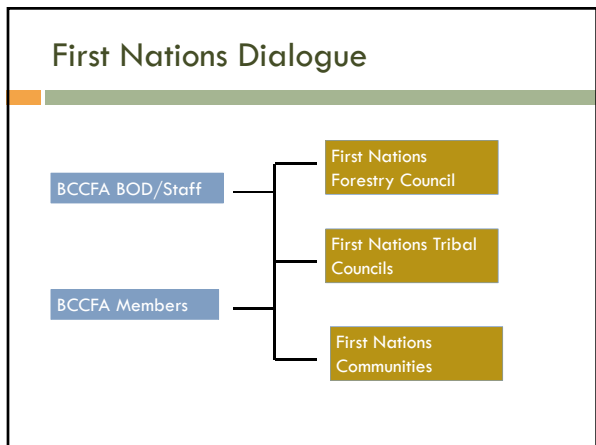
Coordinated by Community Futures of the Central Cariboo Chilcotin for the BC Rural Economic Development Initiative (REDI-BC) in partnership with:

- BCCFA
- The Federation of BC Woodlot Associations
- Cariboo-Chilcotin Beetle Action Coalition
- Southern Interior Beetle Action Coalition
- Omineca Beetle Action Coalition
- Pine Beetle Epidemic Response Branch
- Ministry of Jobs, Tourism and Innovation
- Western Economic Diversification, Government of Canada
- Northern Development Initiative Trust



### First Nations Dialogue

- Focus of Workshop Session #1
- Goal
  - Improve Communication to identify and manage our many common issues and interests for mutually beneficial outcomes.



### Communications and Extension

**Extension Project**

- Will provide information, planning tools and policy guides on community forest governance and forest management.
- Supported by Agriculture & Agri Food Canada's Community Development Program and UBC's Alex Fraser Research Forest.
- Completed 1<sup>st</sup> year of this 3 year project.
- Sessions this afternoon and Partners & Projects tomorrow



## Communications and Extension

### Extension Services

- Ongoing members support.
- Website, listserv & electronic updates.
- Presentations to groups within and outside of BC .



Susan meets with the Indian Forest Service, Vancouver



Robin at Lakehead University, Ontario



Jennifer at Standing Senate Committee on Forestry, Ottawa



Jennifer at Model Forest of Newfoundland and Labrador Conference



[www.bccfa.ca](http://www.bccfa.ca)

