

Fire recovery operations on an area-based tenure

a place of mind



Alex Fraser Research Forest
Stephanie Ewen, Manager

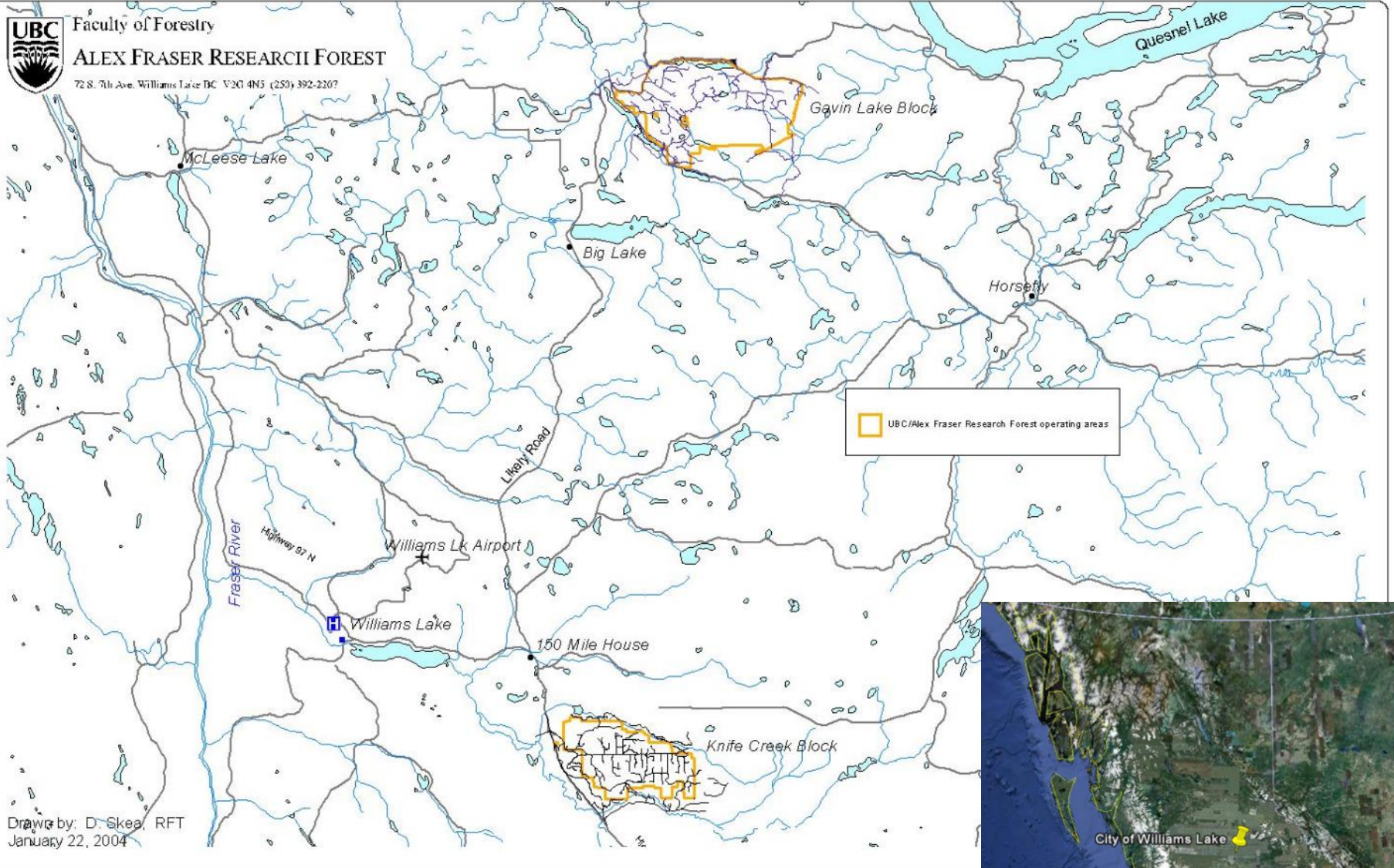
Wildfires on Community Forests: Preparedness, Management and Recovery
March 11-13, 2019



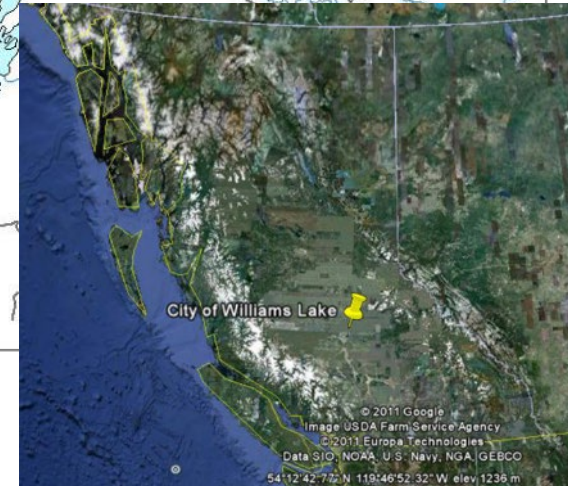
Faculty of Forestry

ALEX FRASER RESEARCH FOREST

72 S. 7th Ave. Williams Lake BC V2G 4N5 (250) 392-2207

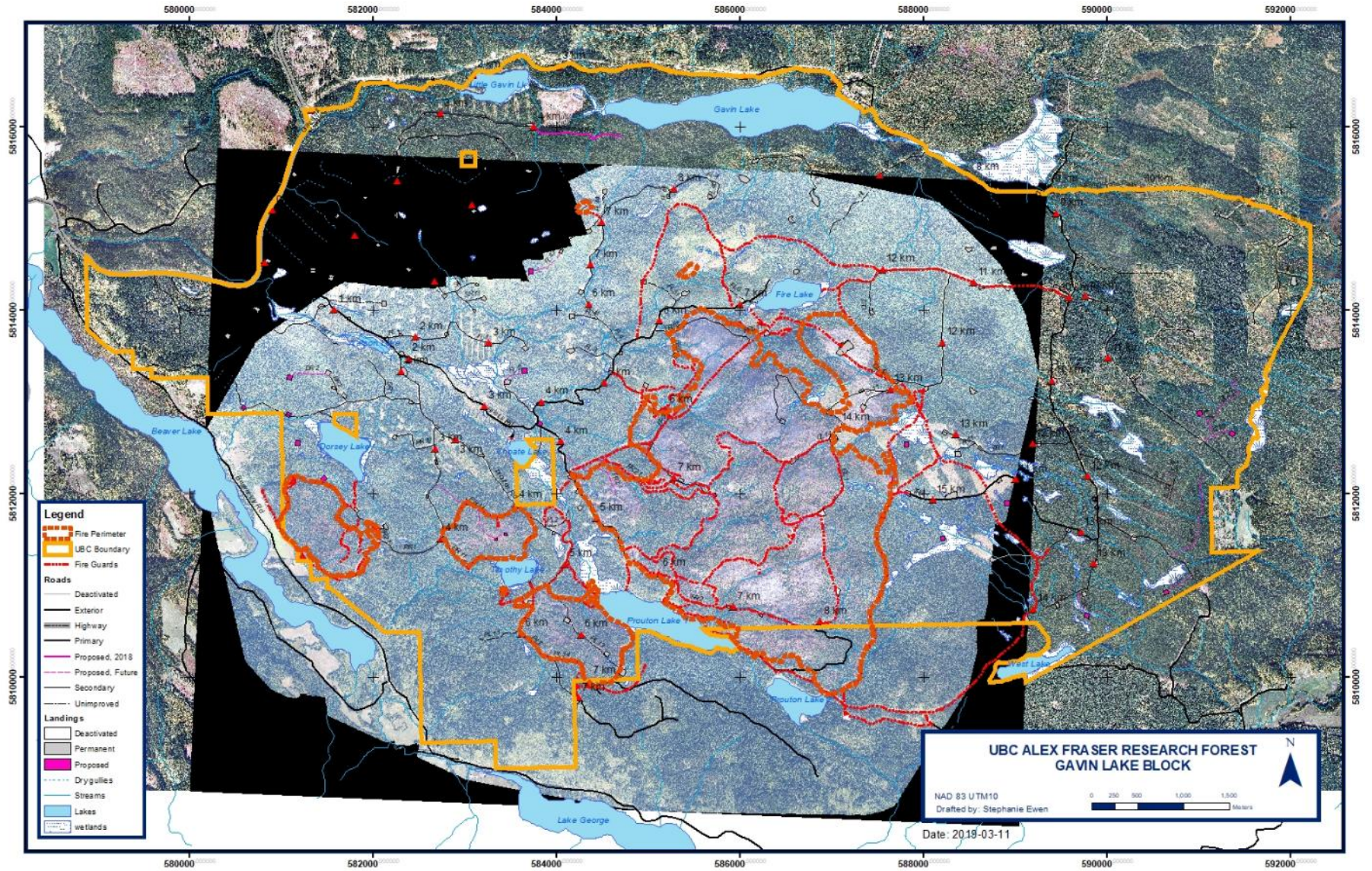


Drawn by: D. Skea, RFT
January 22, 2004



Faculty of Forestry

ALEX FRASER RESEARCH FOREST



Planning Phase: Priorities



1. Assess full extent of damages
2. Prioritize actions to prevent further loss & recover imminent loss



Planning Phase: Challenges

- No documented guidance on standard rehabilitation procedures
- Inconsistent data collection and communication during fires



Planning Phase: Successes

- Good inventory of resources
- Institutional experience in area and fire operations
- Minimal reporting
- Planning in phase with execution of work



Fire-affected Stands: Priorities



1. Prevent loss of value and timber
2. Maintain as much vigorous growing stock as possible
3. Protect non-timber values

Fire-affected Timber: Challenges

- Institutional Capacity
- Log Variability and Specifications
- New Operational Considerations
- Regeneration risks
- Conflicting Values



Fire-affected Timber: Successes

- One CP = quick
- Good Inventory and institutional knowledge
- Great log markets!
- Relatively close to town



Fire Guards: Priorities



1. Prevent soil loss from erosion and mass wasting
2. Reduce spread of invasive plants
3. Reduce effects on water quality
4. Use guards to develop access

Fire Guards: Challenges



- Unrecoverable losses
- Lack of planning guidance: What is “enough?”
- Building roads out of fire guards

Fire Guards: Successes

- Building road out of fire guard
- Fast response
- Long-standing relationships with equipment operators
- Doing work in phase with other operations



Before: Photo ID# 17 C30870D Photo Nov. 08 1239_MG#D32_S6 riparian managemnet area&cleared area_trigger point SC035. Berms at the landing still burning.



Future Management: Priorities



- Leave resilient, vigorous stands growing inside fire perimeters
- Re-establish well-stocked, vigorous plantations

Future Management: Challenges

- Balancing conflicting values efficiently
- Douglas-fir bark beetle
- Capacity
- Reporting



Future Management: Successes

- No typical post-fire pests observed (black army cutworm or *Rhizina*)
- Great seed crops on most native plants
- Still abundant growing stock within fire perimeters
- Potential appetite for adaptive management to create resilient forests



Take Homes

