



Cheslatta Community Forest

Wildfires on Community Forests:
Preparedness, Management and Recovery

Location of Community Forest



Background

- Cheslatta Community Forest was awarded in 2007 and lies within the core territory of the Cheslatta Carrier Nation.
- It covers an area approximately 38,000ha
- It is a 2 – 3 hour drive from any support centre. (Burns Lake or Fraser Lake)

Background

- In 2015, the initial AAC was set at 20,000m³
- In 2017, IFS was commissioned to produce a new Management Plan.

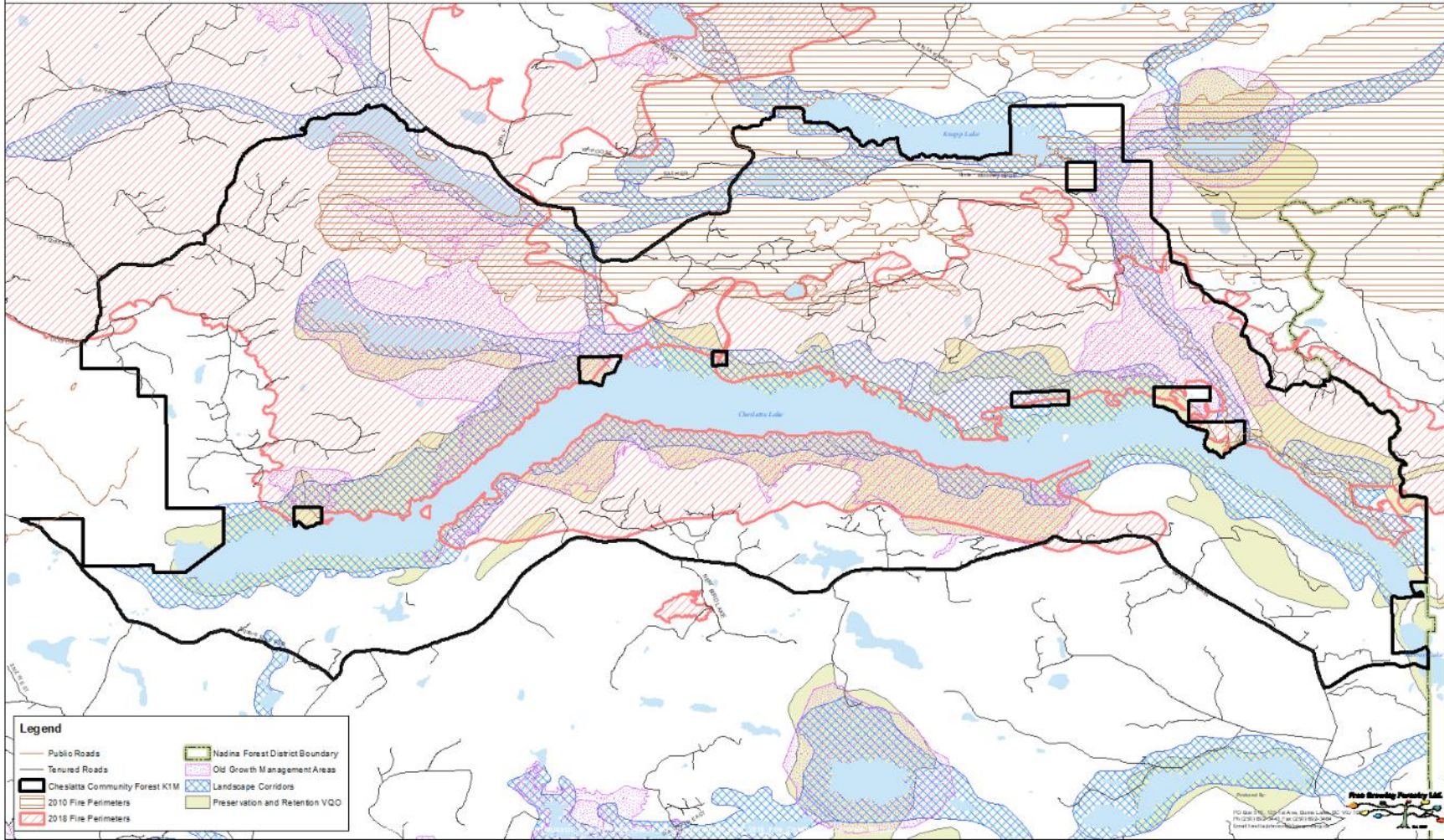
Wildfires 2010 & 2018





Cheslatta Carrier Nation
Community Forest K1M
2010/2018 Fire/Constraints Overview Map

Date: 2019-03-11 1:100,000



Produced by:
Fire Planning Partnership Ltd.
PO Box 718, 1004 A Ave, Delta, BC
V9C 2S1
© 2019 Fire Planning Partnership Ltd.

By the time the flames were out, the 2018 wildfires impacted about 60% of the forested area of K1M.

Salvage Opportunity was estimated by taking the mature unconstrained landbase that is less than 70% pine, reducing it by 1/3 to account for severely burnt areas.

$$2,901\text{ha} \times 66\% \times 140\text{m}^3/\text{ha} = 268,627\text{m}^3$$

Salvaging the Damaged Fibre

Salvage Opportunity was estimated by taking the mature unconstrained landbase that is less than 70% pine, reducing it by 1/3 to account for severely burnt areas.

$$2,901\text{ha} \times 66\% \times 140\text{m}^3/\text{ha} = 268,627\text{m}^3$$

A new AAC is being proposed which will focus on maintaining a balanced 'green' cut while providing an opportunity to salvage as much as possible.

Impact to the Green AAC

Preliminary work done by Alistair Schroff, RPF suggests an ongoing even flow harvest of **9,686 m³/yr** can be supported starting in 2019.

Cheslatta Carrier Nation Participation

Cheslatta Carrier Nation harvesting operations played an active roll.



Staging Area: Cheslatta Fire 2018

Important to recognize and utilize the equipment and personnel that you have available to you. There is likely three feller-bunchers for every dozer working in the bush. Fire managers should recognize the utility of these machines.

With a 1984 D7G and a D6 Dozer, this crew was able to establish 50+km of fire guard with a positive outcome on most days.



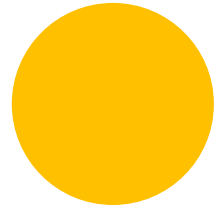
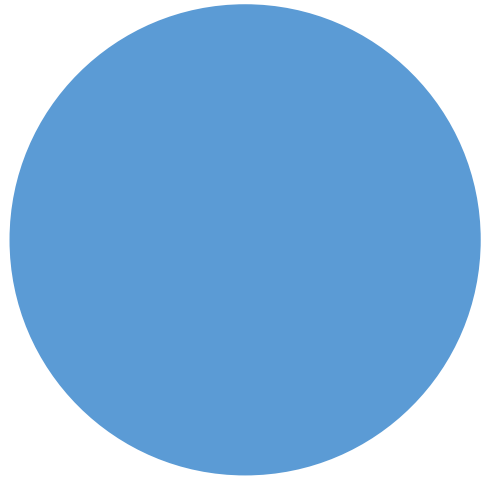
Fuel Management

We had very good success reducing the fuel loading along the fireline by removing or reducing the fuel loading on the inside of the guard.

Our plan was to remove two feller buncher passes and establish a 4m fire guard ~2/3 of the way to the outside of the cleared area.

**By hauling the wood away, the Community Forest can recover more fibre when the smoke settles and increase the success of the fire fighting efforts.





2019 Fire Season

Moving Forward

Cheslatta Carrier Nation Goal

- To play a more active role in fire fighting activities which include:
 - Establishing a Task Force to protect the remaining unburnt areas of their traditional territory.
 - Dozer, Excavator, Lowbed, Line Locator
- Educate members so that there is an opportunity to provide initial attack crews and possibly a unity crew south of Francois Lake for quicker response times.
 - Build the skills!
- To ensure the community has access to fire tools needed to quickly put out a wildfire.
 - Be able to act.
- Maintain Barge access across Ootsa Lake.

CCN is actively engaged with the NWFC.

- Cheslatta Carrier Nation is working to establish a protocol with the North West Fire Centre to ensure their goals are achieved.

Thank You.

