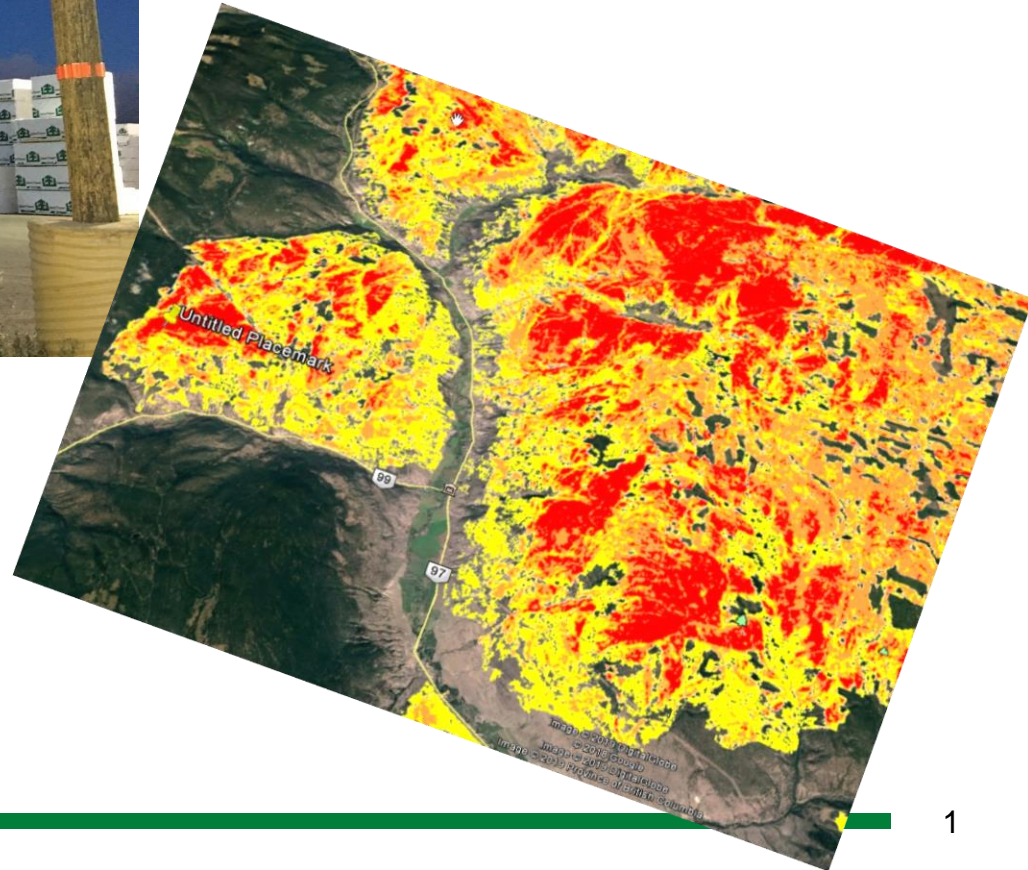


# Salvage Operations and Log Values the Elephant Hill Fire – West Fraser



# Approach

## ➤ Guidance and Supporting Information

- 1. Summary of Ongoing Work – Values Assessments and Related Information to Support Wildfire recovery Planning – EHF – MFLNRORD. Dec 2017.*
- 2. Post-Wildfire Salvage Guidance to Licensees – MFLNRORD. Sept 2017.*
- 3. West Fraser Recovery Strategy for Damaged Timber in Wildfires – EHF. Oct 2017.*
- 4. Post-Natural Disturbance Forest Retention Guidance – Chief Forester. Jan 2018.*
- 5. Post-Wildfire Hydrologic Concerns and Recommendations for Salvage Logging in the Southern Interior – Rita Winkler. Feb 2018.*
- 6. Timber Salvage Principles for Elephant Hill Wildfire – Joint Leadership Council. Feb 2018*
- 7. Post-Wildfire Salvage Expectations for Land use Designations in Cariboo Region – MFLNRORD – Cariboo Region. Feb 2018.*
- 8. Silviculture and Reforestation Principles for Elephant Hill Wildfire - Joint Leadership Council. July 2018.*



# Approach

## ➤ Guidance and Expectations

### 1. Landscape Level

- ✓ OGMA, R & P Visual, WTRA, etc.
- ✓ Slopes >30%
- ✓ Hydrologically and riparian sensitive zones.
- ✓ Focus on retention – Retain live/green trees.
- ✓ Excluding harvest in light-mod burn areas

### 2. Stand Level

- ✓ Extensive riparian and hydric/Sub-hydric area retention.
- ✓ Archaeological and cultural heritage retention.
- ✓ Individual and patch tree retention (both dead and live).

### 3. Timing

- ✓ Estimated 3 year shelf life.





# Fire Intensity





# Stand and Tree Assessment

- Quality depends on tree species and fire intensity
- Primarily IDF stands with past logging history
- Low volume/ha, low stems/ha
- Small piece size
- Sx little to no sawlog value, PI burned up



# Development Challenges

- Hydrological and geomorphological concerns
  - Extensive archaeological concerns
  - Access and road infrastructure concerns
  - Harvest and road building challenges
  - Silvicultural concerns
- 
- ✓ *Higher planning costs*
  - ✓ *Higher road costs*
  - ✓ *Higher logging costs*
  - ✓ *Higher post harvest obligation costs*













# Manufacturing Challenges

- Log yard – minimize yard time
- Blended log runs / straight burn run



# Manufacturing Challenges

- Mill upgrades – de-barker, dust control
- De-barker slows to ensure complete debarking



- Chip production - contribute to local pulp facilities.
- Thus far, quality has been as expected
- Expect more end checks this spring/summer
- Expect greater overall checking by fall/summer





# Summary

- Severely impacted landscapes
- Greater expectations for fire salvage and recovery
- Broader considerations
- Costly

