

The Cheakamus Community Forest Carbon Offset Project

Another Tool for Community Forests

BC Community Forest Association

June 13, 2015



Outline

1. Background
2. Rationale for Carbon Project
3. Process
4. Next Steps

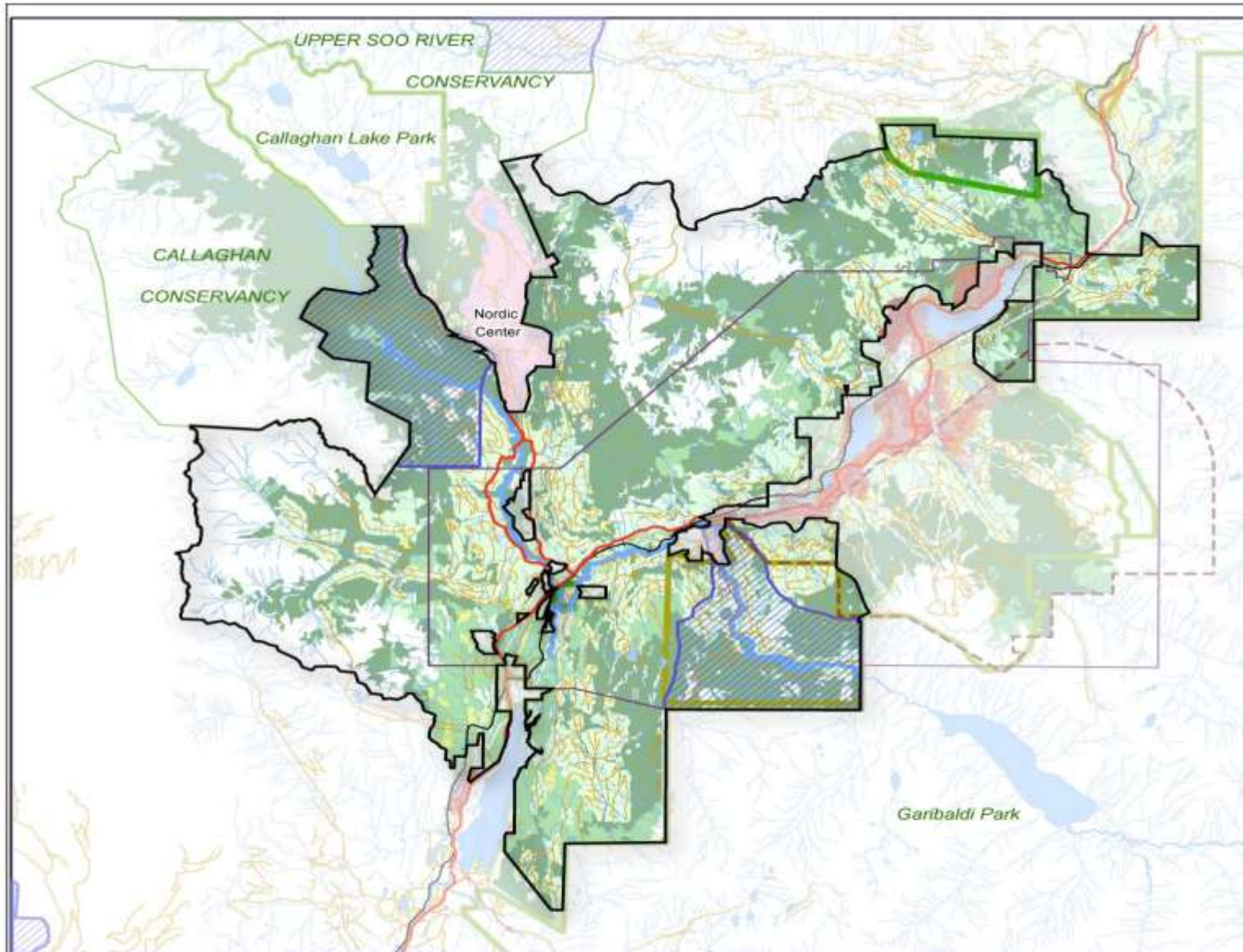


BRINKMAN CLIMATE



ecotrust
canada

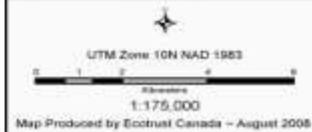




Cheakamus Community Forest



- | | | |
|---------------------------|------------------------------------|----------------------------|
| Whistler Community Forest | LRMP Conservancies | Old Growth (>250 yr) |
| Olympic Venues | Provincial Parks | Mature (80-250 yr) |
| Municipal Boundary | Forest Service Recreation Reserves | Second Growth (0-79 yr) |
| Urban Area | Interpretive Forest | Not Sufficiently Restocked |
| Intrawest Management | Cultural Management Areas | |



Background

- Limited Partnership Agreement : Lil'wat Nation, Squamish Nation & Resort Municipality of Whistler
- Not For Profit Society
- Identified carbon offsets as a tool to enable Ecosystem Based Management and operation in line with will of the community.
- 20,000 m³ Annual Allowable Cut
- CCF tenure signed April 9, 2009



BRINKMAN CLIMATE



ecotrust
canada



Carbon Team

Ecotrust Canada

- Authored initial Ecosystem Based Management Plan Feb. 2009.
- Worked with CCF Manager to negotiate pilot carbon project.
- Secured engagement of Brinkman as carbon market partner.
- Undertook development of carbon project w/ Brinkman & CCF

Brinkman Group and Brinkman Climate

- Offset project development – turning action into offset.
- Carbon modeling, Project Plan, Validation, Verification
- Offset contracting and sales. Navigating delivery and issuance into changing BC System.



Background: CCF Goals

- Ecosystem Based Management approach
- Strengthened Relationships between communities
- Employment & Capacity Building for First Nations
- Public Education
- Support Tourism and Recreation
- Revenue to enhance the Community Forest



BRINKMAN CLIMATE



ecotrust
canada



Rationale: Why pursue carbon?

- Generate non-timber revenues to support implementation of Ecosystem Based Management approach
- Allows CCF to invest in forest infrastructure such as recreation amenities and roads
- In 2008, climate change and carbon markets were part of public discourse. Provincial government issued Climate Action Plan.



BRINKMAN CLIMATE



ecotrust
canada



Rationale: EBM Approach

So, what is Ecosystem Based Management?

Considers environment, economic & social values

...an *adaptive* approach to *managing human activities* that seeks to ensure the *coexistence* of healthy, fully functioning ecosystems and human communities....



BRINKMAN CLIMATE



ecotrust
canada



Rationale: EBM & Carbon

- EBM places additional constraints on harvesting and lowers the AAC
- Meets Improved Forest Management approach of BC Forest Carbon Offset Protocol
- Leaves more trees standing and changes rotation ages than harvesting by FRPA regs
- Baseline scenario (FRPA regs) compared to EBM approach scenario
- “Gap” between the two is starting point for creation of carbon offsets



BRINKMAN CLIMATE



ecotrust
canada



Process

1. Project Plan
2. Timber Supply Analysis
3. Secure Carbon Rights Agreements
4. Validation
5. Verification
6. Contracting and Sale



BRINKMAN CLIMATE



ecotrust
canada

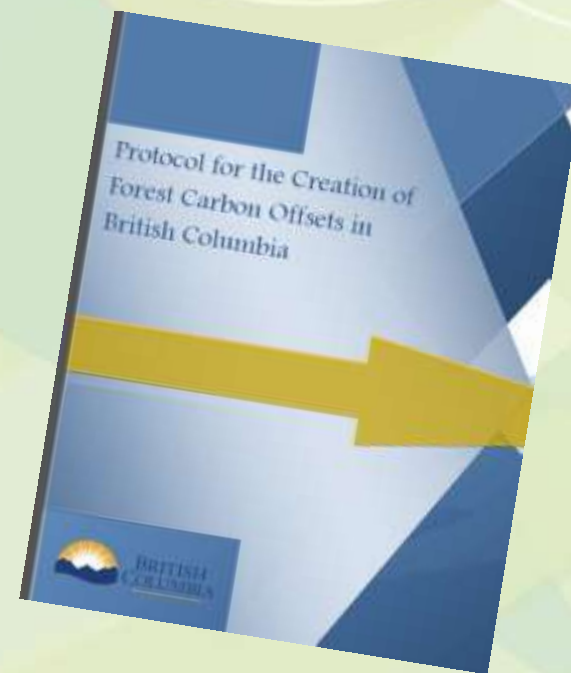


Offset standards and protocols

Market driven by BC Government's 2008 Climate Action Plan

The rules we had to follow:

- BC Emission Offsets Regulation
- BC Forest Carbon Offset Protocol



What do we focus on in a carbon project?

Baseline

- Determining the business as usual scenario
- Carbon stock (land base)
- Carbon in Wood products

Project results

- Projecting the results of EBM plan

Leakage

- Market pressures to harvest elsewhere

Non Permanence Buffer

- Deduction for risk of fire or other unintended reversals
- Safeguards for intended reversals



BRINKMAN CLIMATE



ecotrust
canada



FCOP: Improved Forest Management

Improved Forest Management through Ecosystem Based Management approach:

- Increased representation of old/mature forests, stand structures, ages, species, and ecosystems
- Smaller cut blocks (1-5 hectares)
- Increased buffers in high ecological value areas, such as cultural and riparian areas; and
- Protection of important wildlife habitat.



BRINKMAN CLIMATE



ecotrust
canada



Forest Carbon Storage In Cheakamus Community Forest



— Business as Usual Scenario Total — CCF EBM management



BRINKMAN CLIMATE



ecotrust
canada



Outcomes and Next Steps

Outcomes:

- Verified 59,097 offsets in first 5 years. More to come.
- Long-term contract with higher wholesale price because of Community Forest's multiple benefits
- Voluntary Sales to Whistler, businesses and organizations.
- Revenues to Community Forest

Next Steps:

- Registration on Markit Environmental Registry
- Contracting of voluntary offset sales to buyers
- Annual monitoring and data collection
- 5-year Verifications, delivery and sales



Community Forest Program of Activities

- Brinkman Climate and Ecotrust Canada are developing an offset project that bundles 3-5+ Community Forest projects into a “Program of Activities” (POA).
- Amortizes project cost and timeframes, expands feasibility to more projects.
- We are seeking interested Community Forests to undertake a feasibility assessment, explore fit & opportunity.



BRINKMAN CLIMATE



ecotrust
canada



Summary

- Alternative way to manage forest resources to maximize economic, social, cultural and environmental benefits.
- Scale and partnerships are critical.
- Further work on carbon impact of harvested wood products valuable.
- Requires patience and creative financing tools to succeed.



BRINKMAN CLIMATE



ecotrust
canada



Questions?

Heather Beresford –Cheakamus Community Forest

604-935-8374 hberesford@whistler.ca

Satnam Manhas – Ecotrust Canada

604-616-3680 satnam@ecotrust.ca

Joseph Pallant – Brinkman Climate

778-926-5673 joseph_pallant@brinkman.ca

www.brinkmanclimate.com

