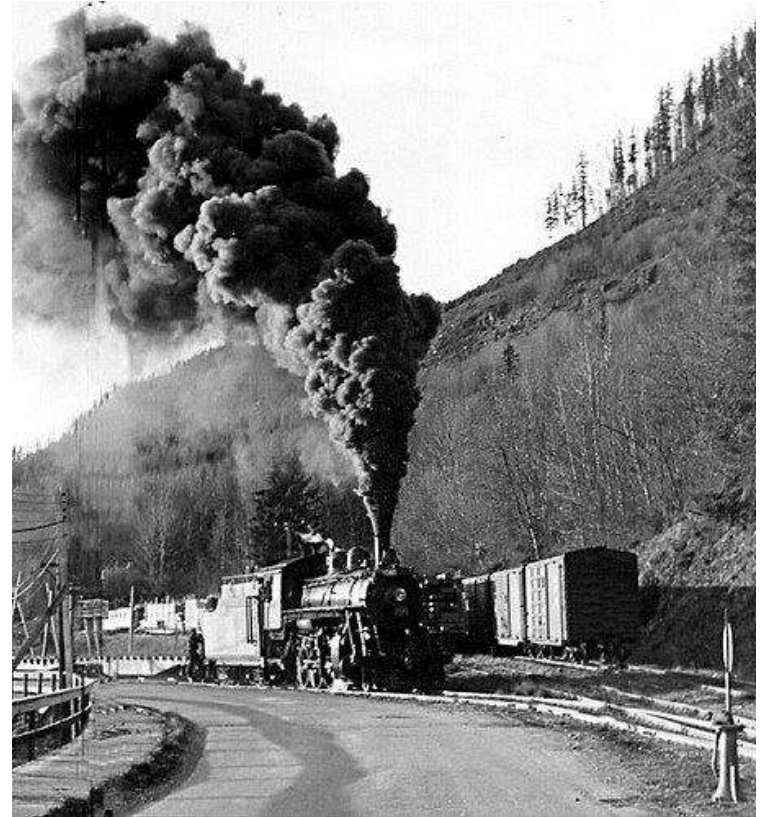


The Cowichan Lake Community Forest Co-operative is a locally owned and managed business co-operative that creates or maintain jobs through its commitment to the principles of forest sustainability and community economic development.



History

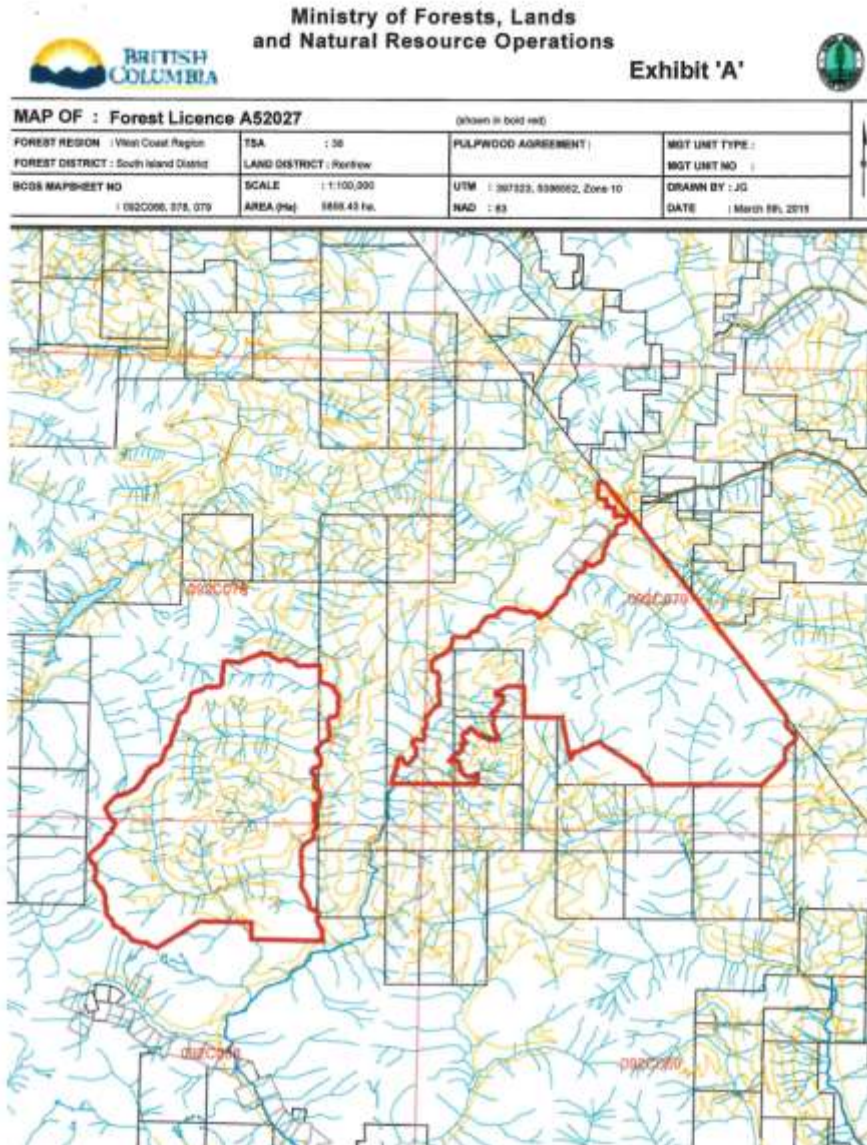
- Established 1995
- Community Forest Agreement Legislation not yet in place
- Granted a Non-replaceable Forest License for 20,000m³/yr
- 8 years ago started process to seek a CFA – without success
- Twenty years later.....
- June 2015 – License expires
- Seeking a 2 year extension – to allow remaining volume to be harvested and provide time for CFA



Operation of the Co-op

- The Co-op is run by a Board of 14 volunteers
 - 8 appointed by 8 founding members and 6 are members at large, appointed by the Board. An open invitation for membership was extended to 3 First Nations.
- **Membership representation includes;** The Town, Cowichan Valley Regional District, Steelworkers, Legion, Elks, Sunshine Improvement District, Future Corp Cowichan, Chamber of Commerce plus 6 appointees.
- **No Employees on payroll:**
 - Service Contracts let for Planning, book-keeping, silviculture, forest management
 - Bid Contracts let for harvesting & Road building

Operating Area



- Qaly?it Partnership
 - Agreement with Pacheedaht FN September 2007 seeking to obtain a Community Forest Agreement based on each partner holding a 50% ownership share

First Nations Relationship



- The Co-op has a long history of good relationship with the Pacheedaht FN at Port Renfrew.
- 8 years ago entered into Qaly?it – a MOU to seek a CFA to replace the NRFL, based on a 50-50 partnership
- MOU updated in 2014 providing a better picture of interests to move the partnership forward in pursuit of a CFA

2014/15 Activities

- Harvested ~27,000m³ timber which was sold to:
 - Otter Point Pole *~10% of their total supply*
 - Coastland Industries *large veneer producer*
 - Karlite/Harmac *local chipping plant, supplying employee owned pulp mill*
 - Cowichan Timber *local producer of timbers supplying international customers*
 - TimberWest* *purchases volume at time of production, redistributing to Cowichan Timber and other customers throughout year*



What is done with revenues?

- Forest Workers Memorial in Lake Cowichan
- Annual Student Scholarships
- Trail development and memorial to site of WWII plane crash site
- Pacheedaht Scholarship for post-secondary training in forestry
- Youth sports
- Heritage Church in Youbou

Managing the Licence

- Log Pricing – imperative to successful operations
- Operation costs – harvesting, roads, transportation
- Planning & management
- Post logging – surveys, site treatments , reforestation to green-up, roads. Pacheedaht provides planting through direct award contracts
- Audits: The FPB has conducted an audit on the Licence. Internal audits/inspections are also done.

Where are we at?

- 2014 renewed MOU with CLCFC & Pacheedaht & engaged with Pacheedaht membership
- Met with Minister Thompson in October, 2014 and with senior staff at District and Regional Offices of MFLNRO
- Met with members of Liberal Caucus in April, 2015
- Hired expertise to assist with moving towards an invitation for a CFA
- Prepared a video to assist in telling our story
- Made presentations to various groups including the Town, CVRD, Chamber of Commerce etc.
- Recently received a 2 year extension to NRFL to allow harvest of all volume contained in the license and time to pursue CFA
- Actively seeking an invitation for a CFA from the Ministry that will allow for an AAC of ~30,000m³

Questions?



Proposal for 2016 meeting in Lake Cowichan

- Cowichan Lake Community Forest Cooperative has a history of 20 years
- Seeking invitation for a CFA to replace expiring NRFL
- Operating area is 25 minute drive from town
- Customers in the Cowichan Valley including Otter Point Pole, Cowichan Timber, Karlite, and Shoal Island DLS
- Local Katza Museum historical perspective to region and forest industry
- MFLNRO Mesachie Lake Research Station
- Forest Workers Memorial