

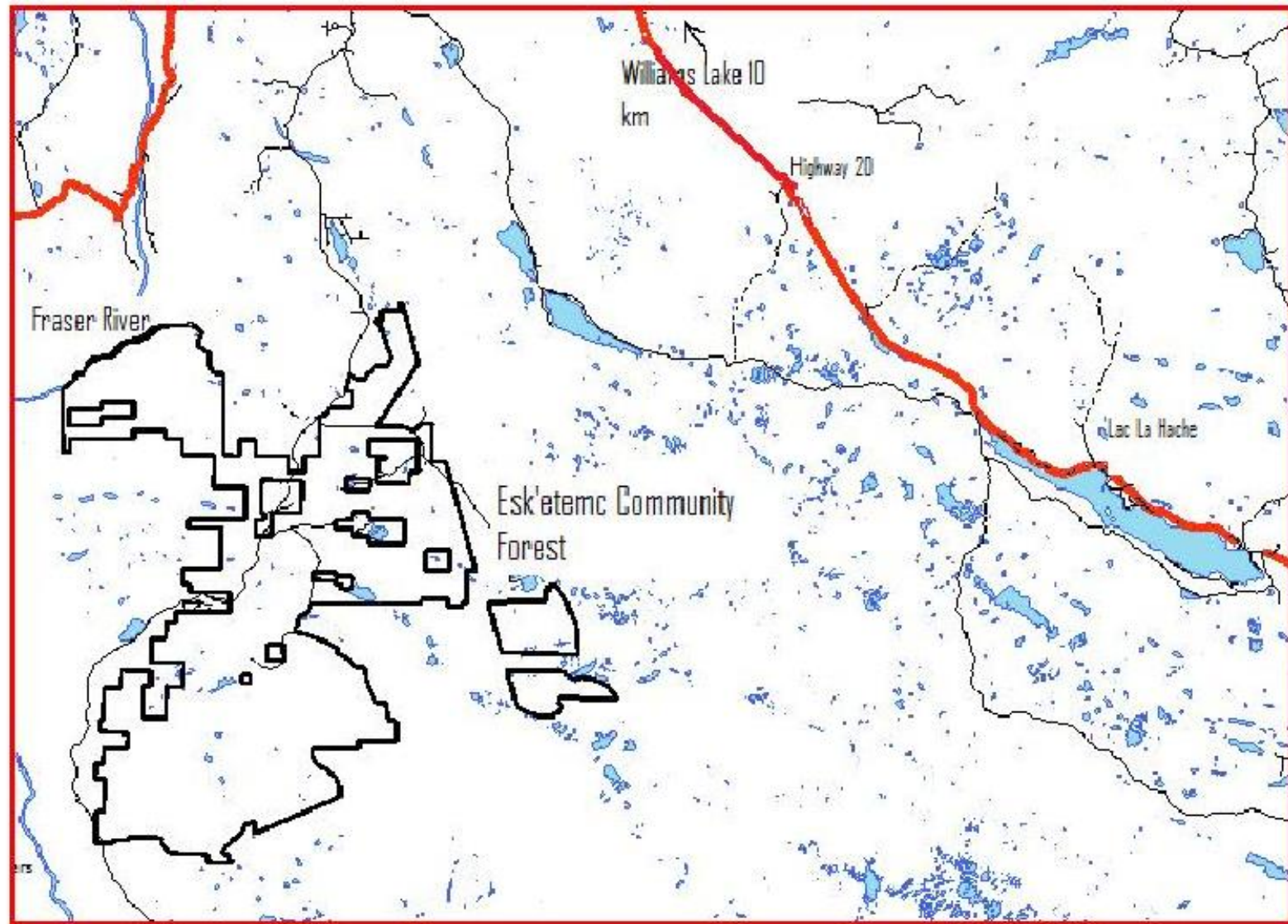
Esk'etemc Community Forest

CFA TENURE K1C
ALKALI LAKE, B.C.



Esk'etemc – People of the White hills





History of K1C

Timber Harvesting started in the adjacent forests in the 1950's

Confrontation Started to occur in the 1990's

Invited to apply for a CFA in 1999

Was awarded K1C with 15,000 m3 licence in 2001

25 year licence awarded in 2006

Conducted a Timber supply analysis in 2008

Operations shutdown in 2009 due to poor Economy

Started operations again in 2010

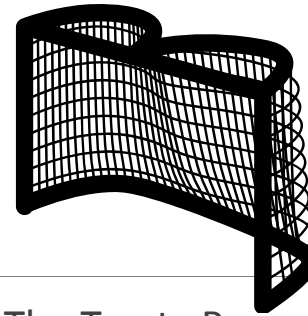
Awarded increased AAC in 2011 to total 20,000 m3

Has been 100% compliant with cut control since 2001

100% owned by the Esk'etemc people.



Goals



Self Governance by the Esk'etemc First Nation – Stage 5 of The Treaty Process

Create Employment for the Community

Forestry will contribute towards financial independence

Increase management capacity – Capacity Building

Work with other users of the land – Ranchers, Tourists, Forest Industry

Incorporate Forest management that supports Mule Deer Habitat - MDWR

Manage the Dry belt Douglas fir Ecosystems - Density



ARM – Alkali Resource Management

ARM has the mandate to manage the Forest tenures owned by the Esk'etemc

ARM is 100% owned by the Esk'etemc First Nation

Has 5 directors on the Board – 3 from the Community, 2 from outside the community

Directors should not be on the Esk'etemc council- politics / business

Manages the Community Forest, 1 RFL, 3 NRFL's and 1 woodlot

Run with 1 manager, 1 office administrator, Senior Forest Tech, 4 technician's, 2 summer students

To encourage training there are temporary positions that also include 1 admin assistant, and 1-3 summer students

ARM is safe certified with up to 20 tree spacers 20yrs, 25 fire fighters 10 yrs, 15 tree planters 4 yrs– all seasonal employment

Contract logging operations – must hire two Esk'etemc employees

Building Capacity

SILVICULTURE SURVEYS, TRACKING DATA



DEVELOPMENT



Involvement of the Community

COMMUNITY



STRATEGIC PLANNING



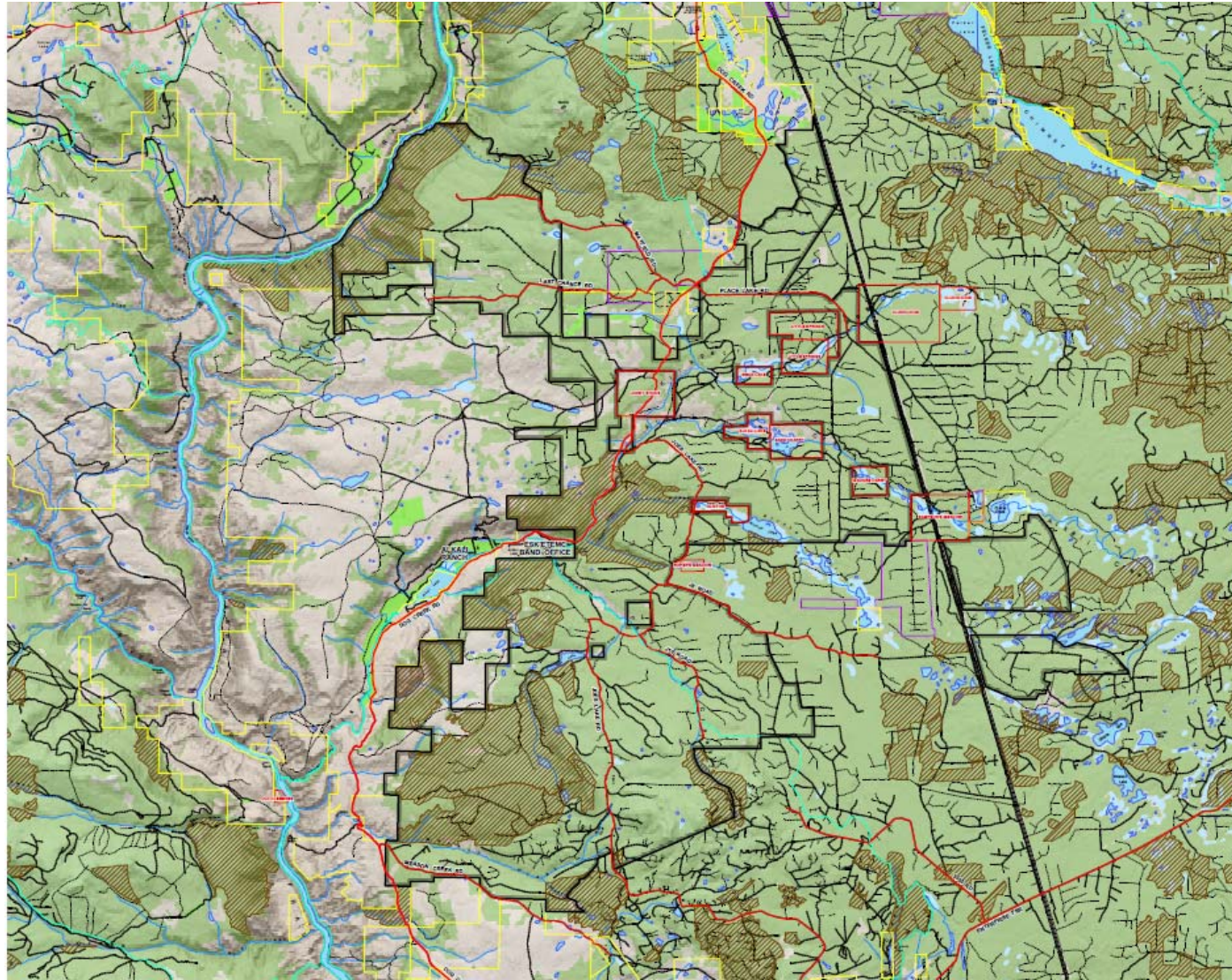
Diverse Ecosystems

IDF dk3 -

IDF xm

BG xw2

Many Grassland Ecosystems where Forest is encroaching on the Grasslands.



Dry Belt Douglas Fir Ecosystems



We are Restoration Specialists

THOSE CAR RESTORATION GUYS HAVE NOTHING ON US

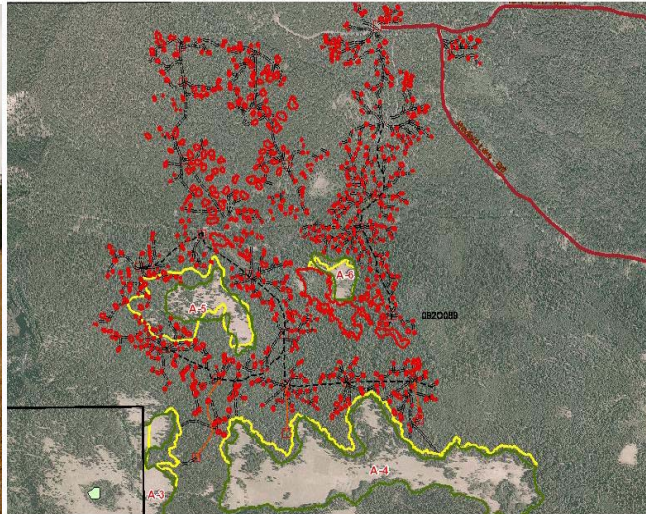


Grassland Restoration





Mule Deer Habitat Restoration



Density Restoration



Density Restoration Results



Spacing



Slide 17

GC1

Gord Chipman, 21/05/2013

Manufacturing – Restoring Jobs



Lessons Learned



Log Prices have a closer relationship to stumpage rates than to lumber prices.

Must be able to walk before you can run.

Keeping the community involved can be challenging but rewarding.

It is important to stay involved in the TSA that is around you.

The single cutting permit is great for innovation.

Change is the only thing that you can count on.