



Arminius
9 AD

Introduction:

Rainer Muentner

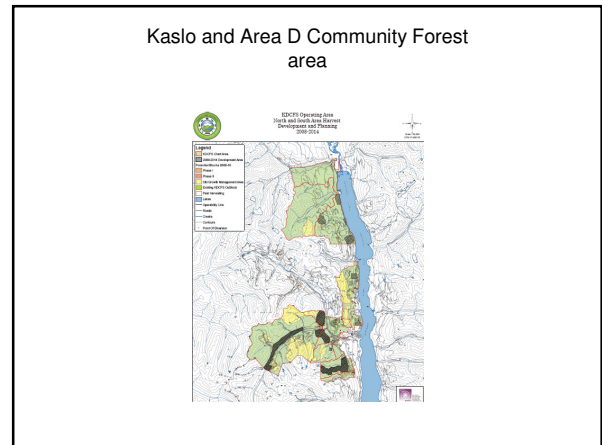
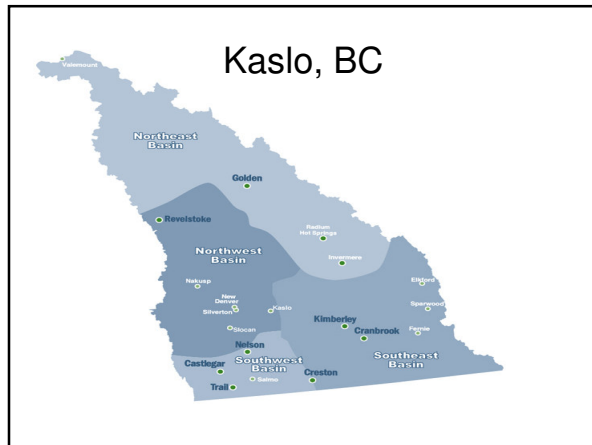
Monticola Forest Ltd.
1 of 2
Managers for Kaslo and Area D
Community forest

'80s: Forest Manager in Germany

'90 until now: Private managed
in BC (9,000ha)
and in the USA (3,000 ha)

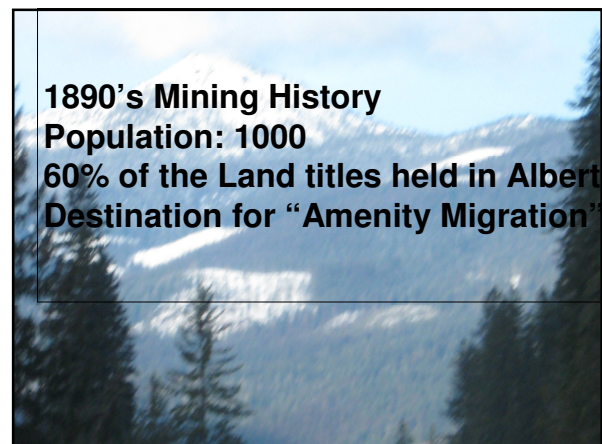
'00 Douglas Lake Ranch
Stuwix NRFL

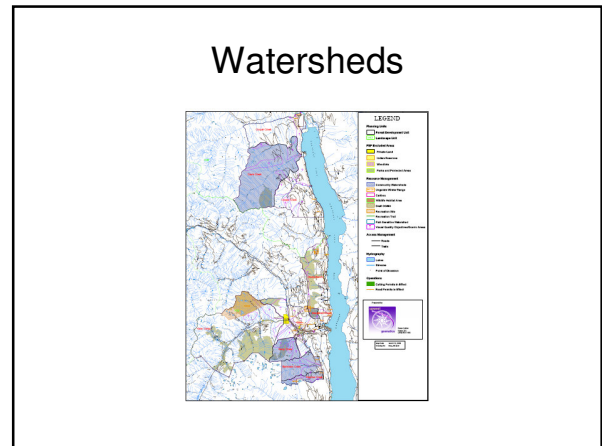
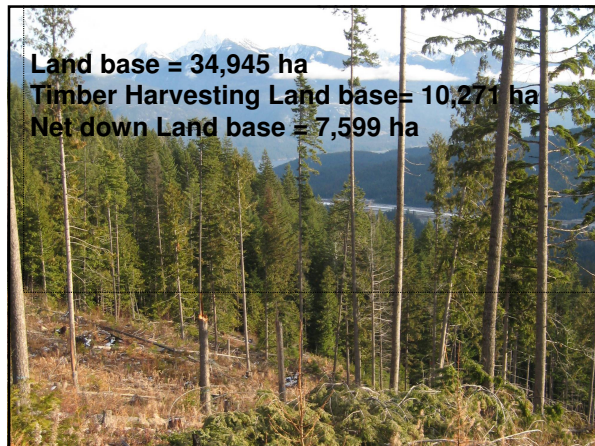
'07 Kaslo Community Forest



History

Year	
1996	Founding of KDCFS
1997	Award of NRFL, 10,000 m3 AAC
2004	PCFA application started
2008	PCFA awarded , 25,000 m3





Goals set in different plans

Society	Business Plan
<ul style="list-style-type: none"> • Sustainable Forest Practice • Greatest Benefit to Community 	<ul style="list-style-type: none"> • Sustainable Forest Practice • <u>Optimize capital investments?</u> • Optimize timber yield
PCFA	Management Plan
<ul style="list-style-type: none"> • Fulfill cut control • Meet standards • Encourage co-operating 	<ul style="list-style-type: none"> • Maximize social + economic benefits • Educate • Promote local employment • Economical Diversification

Threats

- Forest Health
 - Bark beetles
 - Root rot
- Forest Fire
- Slope stability
- Market Downturn
 - poor markets for the roaded timber supply

Weaknesses

- Quality of roaded timber supply
- Inventory information
- Conflicting goals
- Steep terrain
- Markets
 - Access to Markets
 - Distance to Markets
 - Small Volumes to Offer

The Challenges

Economic Change

Social Change

Dealing with the Threats

W – T	Addressing WEAKNESSES	To mitigate THREATS
	<ul style="list-style-type: none"> • Improve roaded access to timber supply • Utilize provincial programs • Good long-term planning • Carbon credits • Co-operation with others • Export 	<ul style="list-style-type: none"> • Forest Health • Forest Fire • Slope stability • Market Downturn

Deal with the Threats

S – T	Use STRENGTHS	to minimize THREATS
	<ul style="list-style-type: none"> • Financial Strength • Timber Quality 	<ul style="list-style-type: none"> • Weather market down -turn • Improve roaded access to timber supply • Monitor forest health, early interventions



Burial of an urn in the drip line of an old memorial tree



Catchy ending ?

