

Lisa Ambus, WCFC Director  
Presentation for the BC Community Forest Association  
June 3, 2010  
Westbank, BC


## Overview

- Basic Facts & Details
- WCFC Mission & Core Values
- Governance & Management
- Community Involvement & Benefits
- Challenges & Opportunities

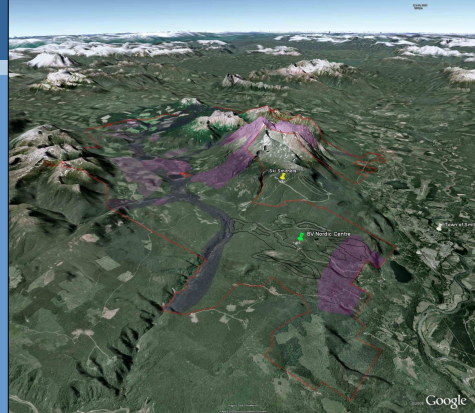
2

## Where is Wetzin'kwa CF?

- Bulkley Valley: Smithers, Telkwa, Moricetown & rural areas
- Territory of the Wet'suwet'en First Nation
- *Wetzin'kwa* refers to the "flowing blue green or clear waters" of the Bulkley/Morice Rivers



3



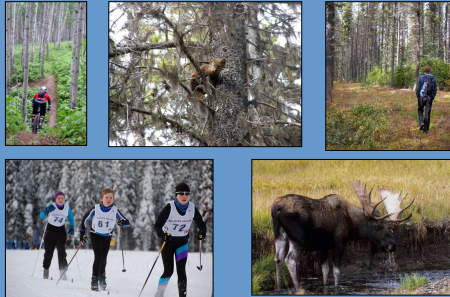
4

## Tenure Details

- CFA #K2P awarded in 2007
- Recent offer for long-term CFA
- Area: 32,897 ha
- THLB: 16,000 ha
- AAC: 30,000 m<sup>3</sup>
- Commercial species:
  - Lodgepole pine, Spruce, Sub-alpine fir, W. hemlock
- Tenure includes NTFPs

5

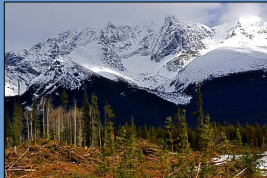
## Multiple Values



6

## Wetzin'kwa Mission Statement

- *WCFC will manage a profitable community forest tenure while providing good forest management stewardship that will sustain forest resource values for future generations*



7

## Core Values

- Sustain a financially viable forest resources business for the long term benefit of residents in the Bulkley Valley
- Maintain and sustain functional integrity of ecosystems
- Manage for the long term biological sustainability of the tenure lands
- Protect water quality in watersheds
- Maintain a healthy balance of all plants and animals
- Recognize the Wet'suwet'en people and their culture



8

## Core Values cont.

- Establish long lasting, respectful relationships between the partners
- Expand employment opportunities when and where feasible
- Provide a safe and environmentally friendly work environment
- Enhance outdoor educational and recreational opportunities
- Increase community involvement in resource management
- Reflect community values in decision making



9

## Governance & Management

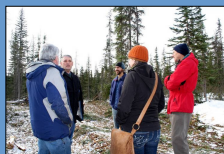
- CFA held by a numbered company
- Smithers and Telkwa are equal shareholders
- Numbered company owns WCFC
- Office of the Wet'suwet'en and NewPro are strategic partners
- WCFC volunteer Board:
  - 4 designated positions
  - 3 directors at large
- General Management provided by Silvicon Services
- Local operational contractors



10

## Local Planning Direction

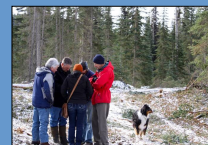
- Bulkley Land & Resources Mgmt Plan
- Bulkley Valley, Telkwa & Copper Landscape Unit Plans
- Wetzin'kwa Mgmt Plan
- Forest Stewardship Plan
- In future: Wet'suwet'en Territorial Plan
- Resource Users Group



11

## Community Involvement

- Memoranda of Understanding:
  - BV Cross Country Ski Club
  - Smithers Community Forest Society
  - Office of the Wet'suwet'en
  - Smithers Mountain Bike Assoc
- Resource Users Group
- Community Outreach activities (e.g. a walk in your woods)
- Community Survey



12

## Local Benefits & Contributions

- Local expenditures by WCFC

2008	1.5 million
2009	1.7 million
2010	~1.1 million

- All timber harvested from CFA used by local manufacturers
- WCFC dividends used for:
  - Debt repayment
  - Establishment of reserve fund
  - Next year operations
  - Profit redistribution



13

## Community Grant Program



- Competitive application process & a few direct awards
- 2009: \$120,000 awarded to 15 regional organizations
- 2010: \$150,000 to be awarded in July

14

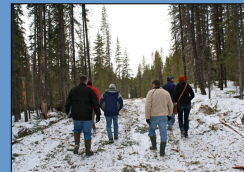
## Challenges & Opportunities

- Ongoing and meaningful community involvement
- Maintaining high standards of forest stewardship in the face of the pine beetle epidemic
- Creating opportunities for more 'value added' wood processing
- Uncertainty regarding stumpage rates & remaining financially solvent in a weak log market
- Reinvesting profits to provide the greatest long term benefit to the Bulkley Valley

15

Thanks for your attention  
Questions?

[www.wetzinkwa.ca](http://www.wetzinkwa.ca)



16