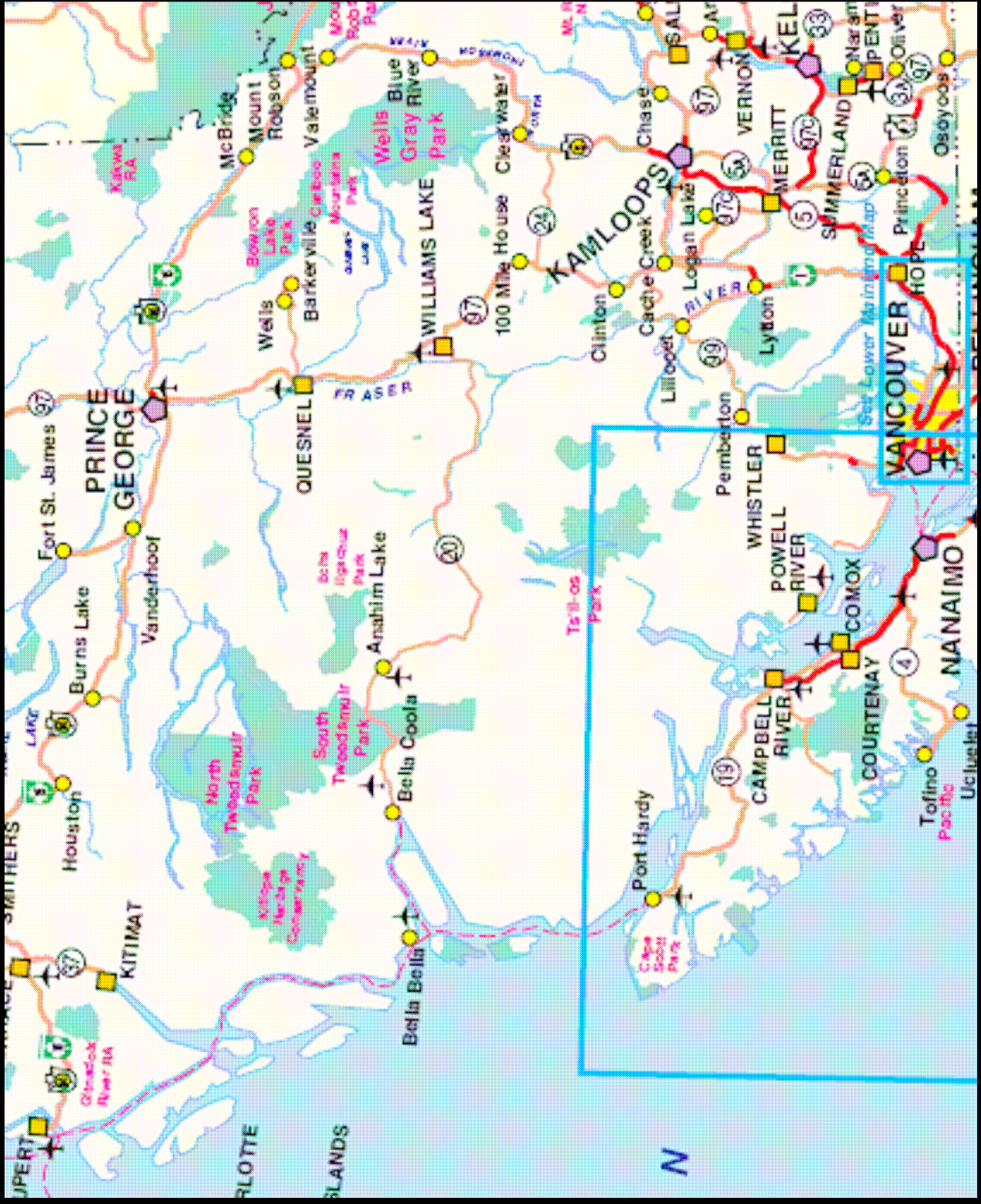


The Long Road to the Bella Coola Community Forest

Hans Granander
Bella Coola Resource Society

June 1, 2007





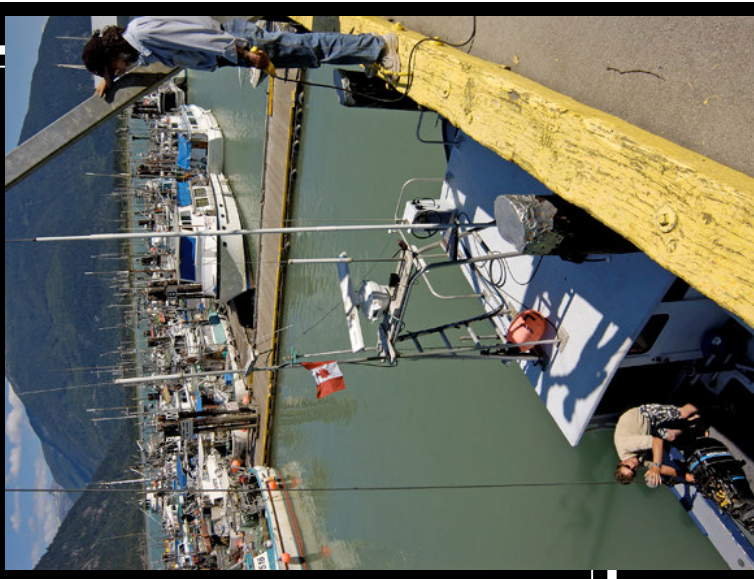
Bella Coola's Road to Community Forest

- History/ Context
- Mobilizing
- Identifying Operating Areas
- Application Process
- Organization & Implementation
- Impressions

Description & History

- Located in Nuxalk Nation Traditional Territory
- Settled by Norwegian immigrants 1894.









Description & History

- 1950's Industrial Logging
- Most valleys progressively clearcut
- Forest licenses held by major companies
- Minor local milling



Community Mobilization

- 1980's local harvest rate sustainability concerns
- 1990's Local Resource Use Plan
- Great Bear Rainforest Campaign
- Late 1990's collapse of hemlock market
- 1998 apply for Community Forest Pilot Agreement
- 2001 Interfor closes local operation

Community Mobilization

- Town Hall Process
- Bella Coola Resource Society
- Central Coast LRMP
- EBM and Community Empowerment
- Re-allocation of major tenure
- Opportunity to challenge government

Community Mobilization

Oct 21, 2004, **Invitation to Apply**
for Probationary Community
Forest Agreement



Operating Area Issues

- AAC offer 30,000 m³
- Fit with Nuxalk Nation plans
- Chart areas committed
- Species profile
- Non-timber values

Bella Coola Community Forest Operating Area

#	Supply Block	Gross Area	Working Forest Area
1	Salloompt/Noosgulch	35,275	3,470
2	Nooseseck	14,541	539
3	Nusatsum/Noomst	45,697	4,144
4	Kwatna Peninsula	3,503	69
5	Clayton Falls	4,890	655
6	Gyllenspetz/Talchacko	24,757	389
	Total	128,663	9,266

3 Hagensborg – SAMS Program



2 - Nooseseck (Green Bay)



4 Kwatna Peninsula



Organization & Implementation

Bella Coola Resource Society

- Tenure Holder
- Open membership
- Directors elected from membership

Organization & Implementation

Bella Coola Resource Society

- Tenure Holder
- Open membership
- Directors elected from membership



Community Forest Company

- Manage tenure
- Raise finances
- Local investors select Directors
- Consulting Management

Organization & Implementation

Bella Coola Resource Society

- Tenure Holder
- Open membership
- Directors elected from membership



Community Forest Company

- Manage tenure
- Raise finances
- Local investors select Directors
- Consulting Management

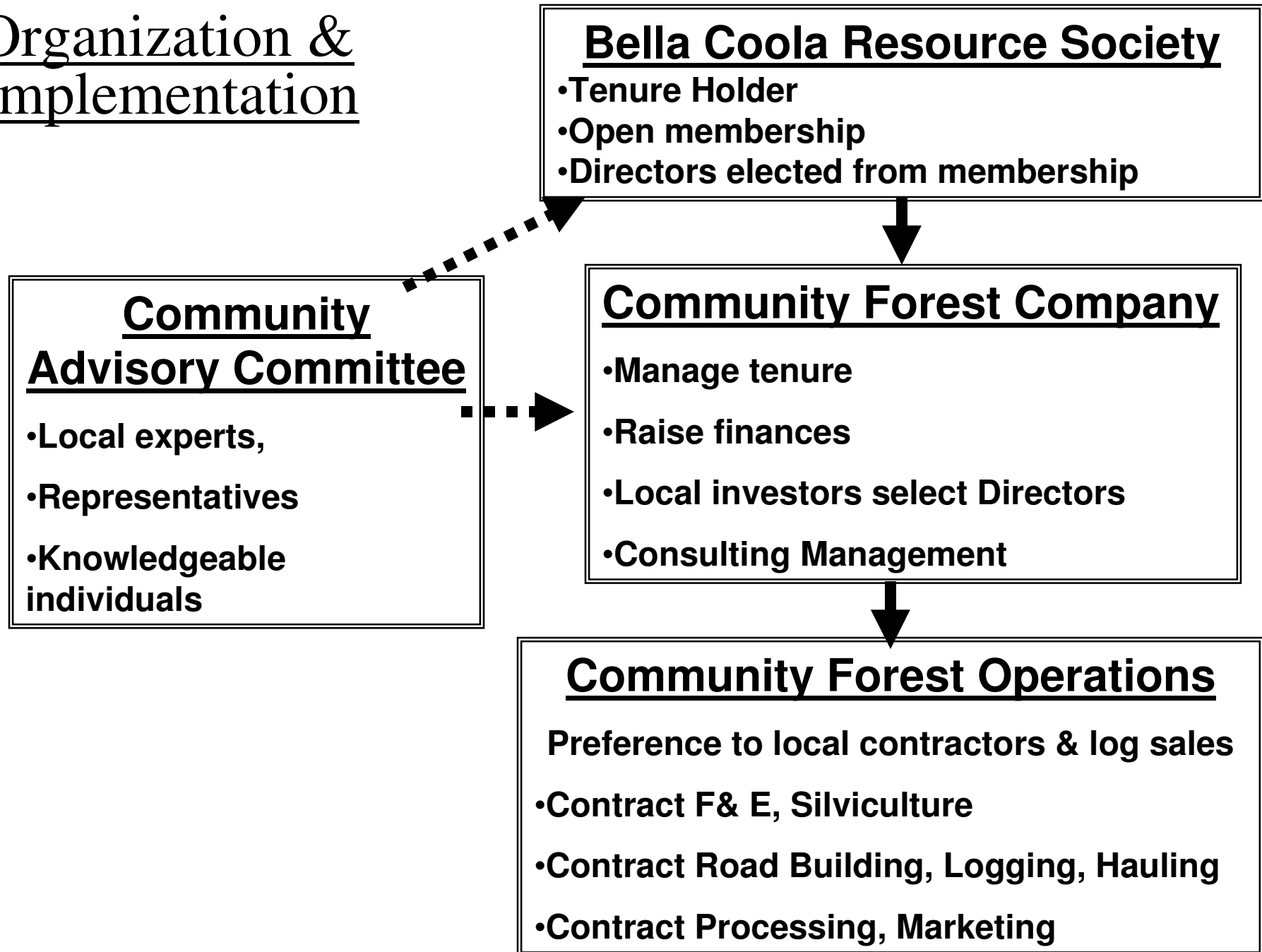


Community Forest Operations

Preference to local contractors & log sales

- Contract F& E, Silviculture
- Contract Road Building, Logging, Hauling
- Contract Processing, Marketing

Organization & Implementation



Application Process

- Lobbying 2001-October, 2004
- Operating Area ID – 2004 - March, 2006
- Application – Submitted, July 2006
- Delays due to process out of BCRS control
- Lobbying \$30,000
- Application \$82,000
- Company start up \$28,000



Organization & Implementation

Issues

- **Challenging Economics – coastal forest industry still struggling.**
- **Community forest inventory:**
 - 70% hembal
 - 24% Doug-fir
 - 5% cedar
 - 1 % other
- **Remote operations, high operating costs.**

Organization & Implementation

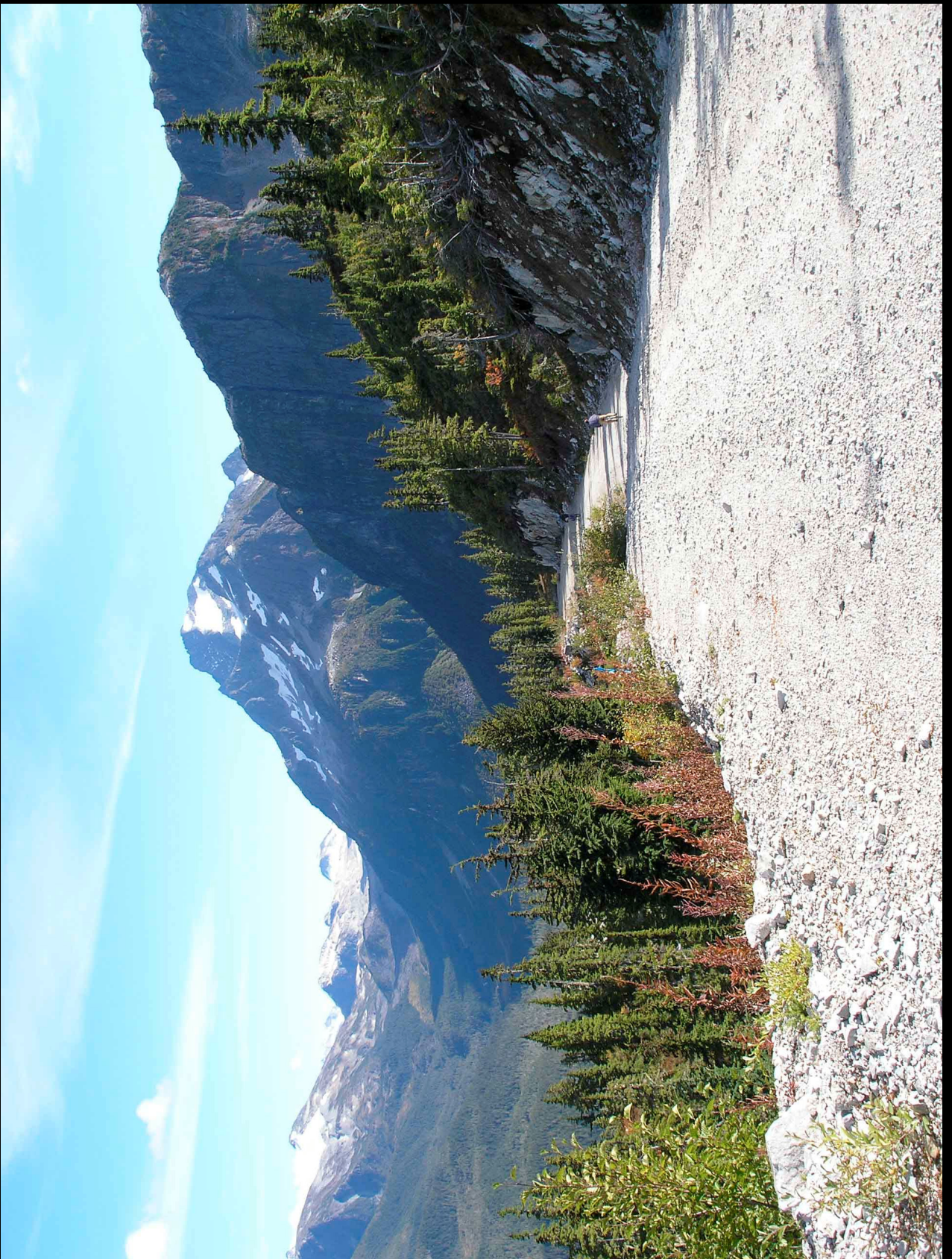
- Need to work with Nuxalk Nation
- Joint planning project with Nuxalk Nation to initiate EBM
- Need community individuals to invest
- Best advertisement is special values and opportunity for self determination.





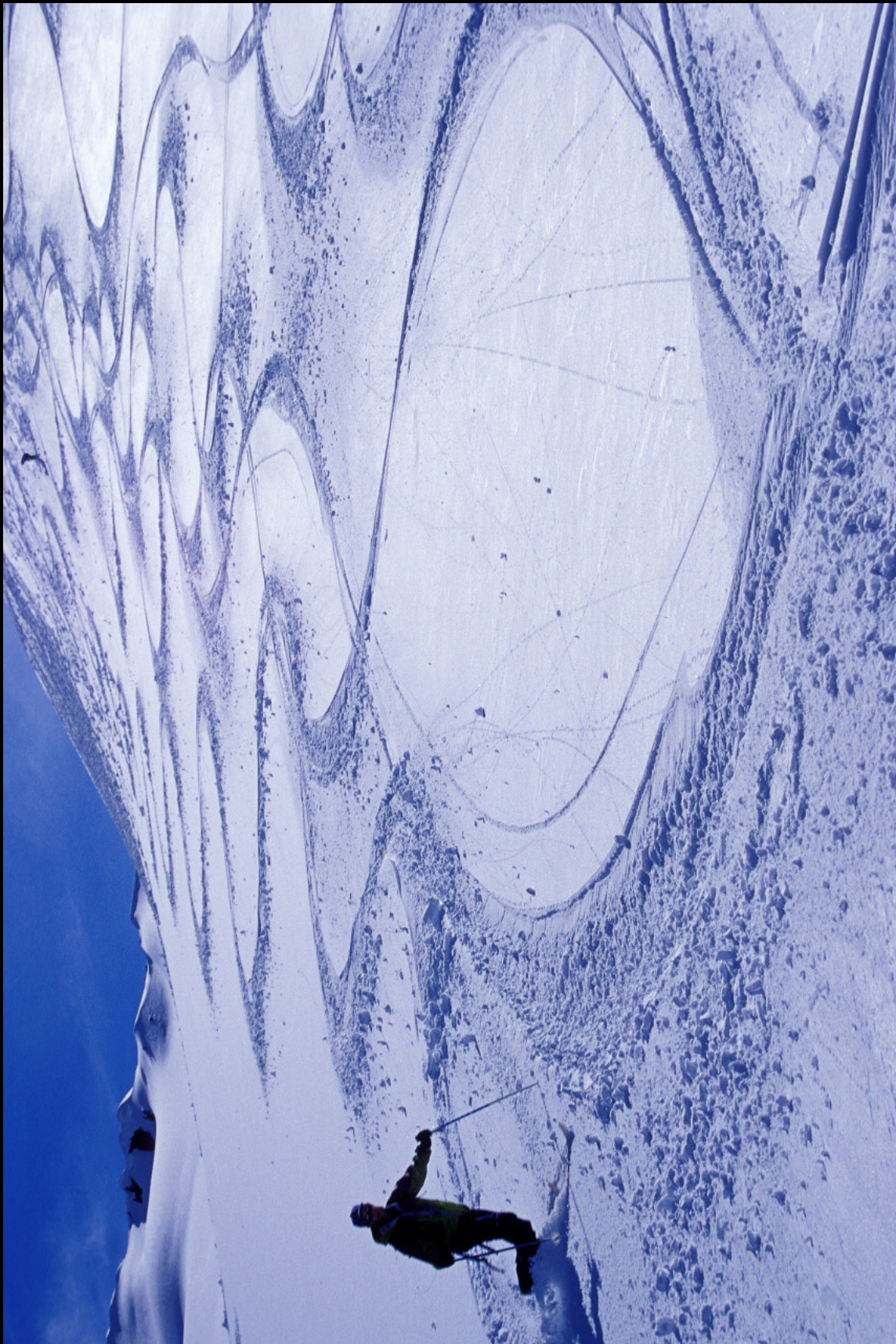




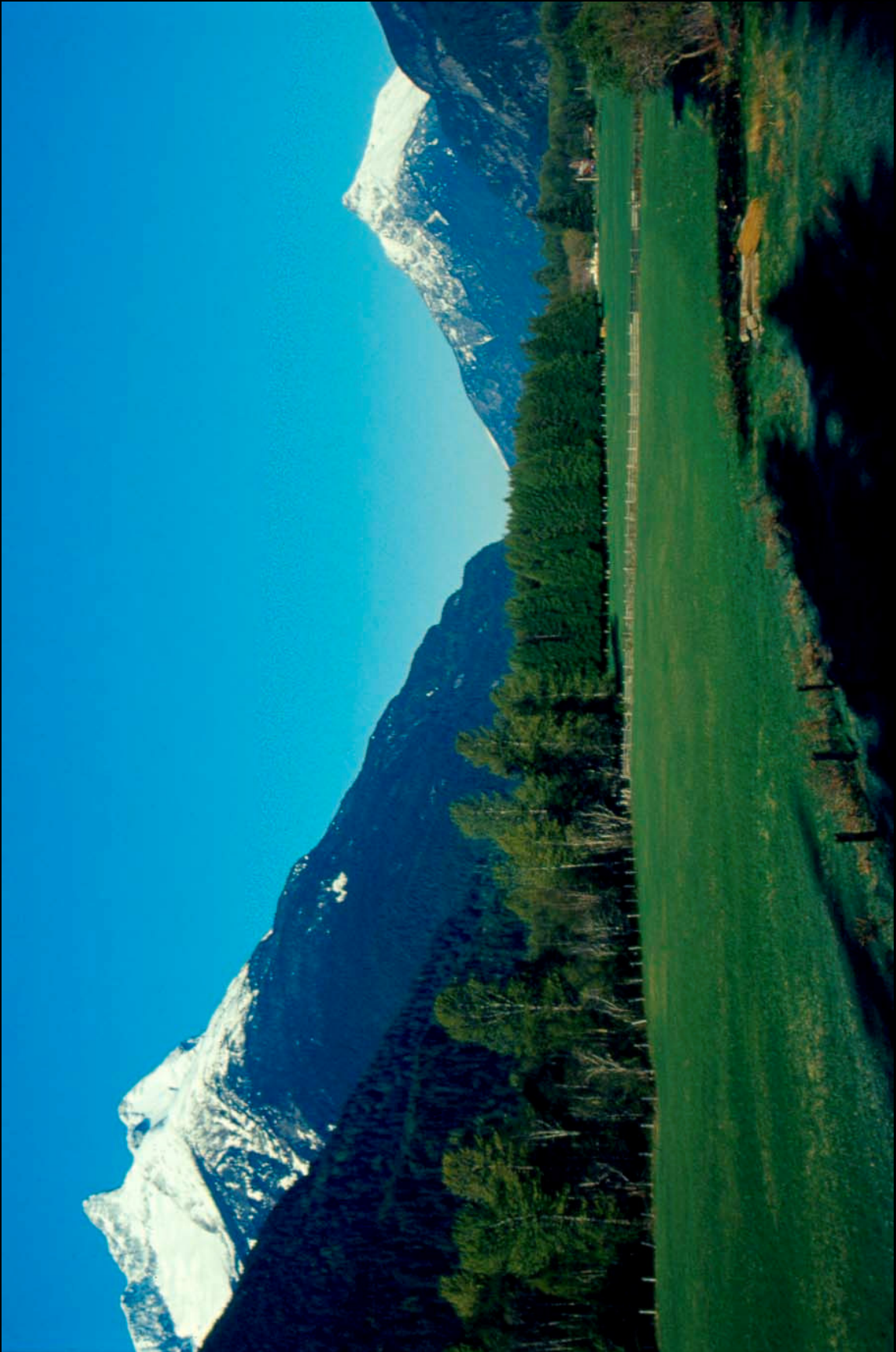


























BELLA COOLA
COMMUNITY FOREST LTD.