



local forests, local people, local decisions

15th Annual Conference and AGM

June 15, 2017

Tumbler Ridge, BC

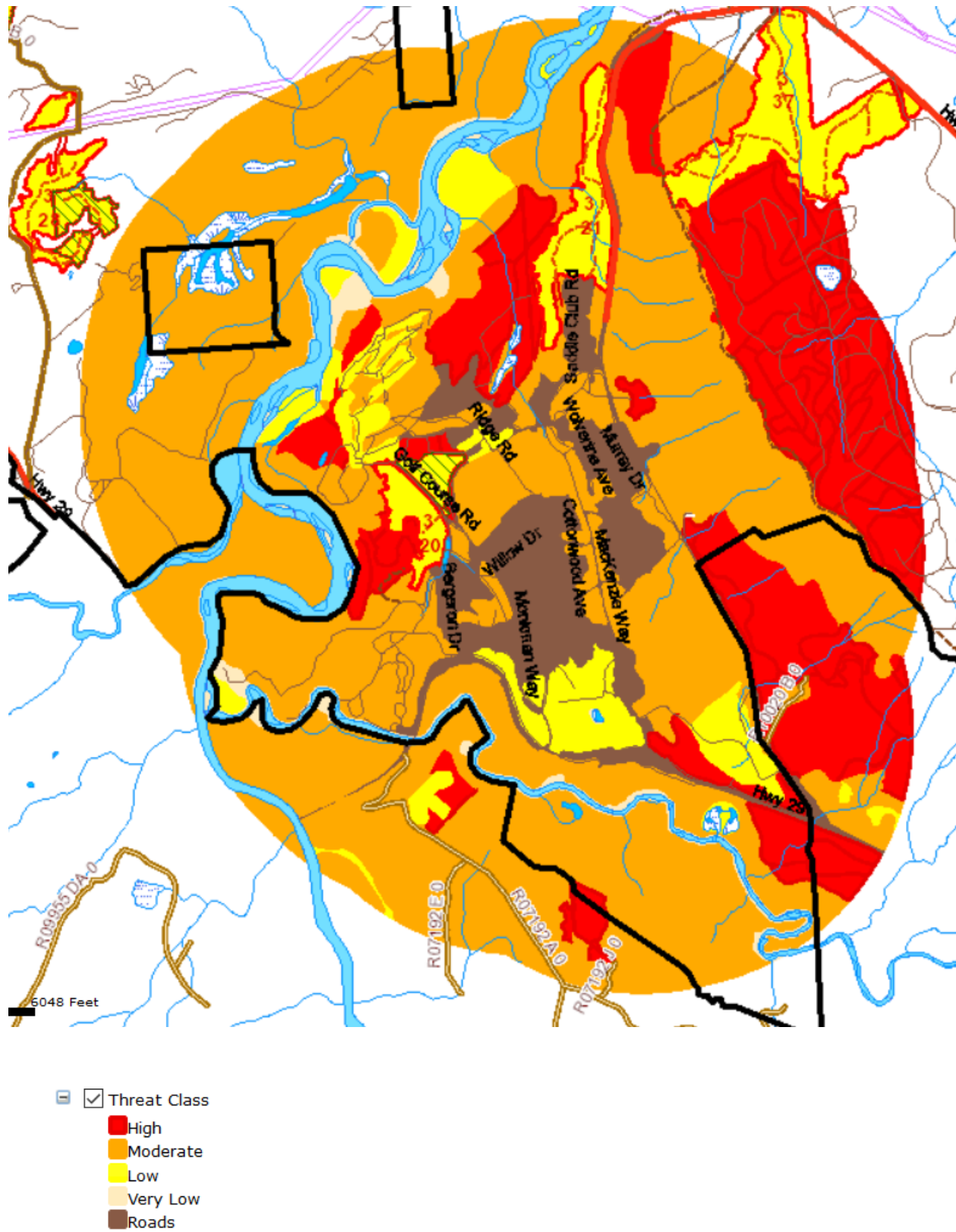
Field Tour 2017



Field Notes

June 15, 2017

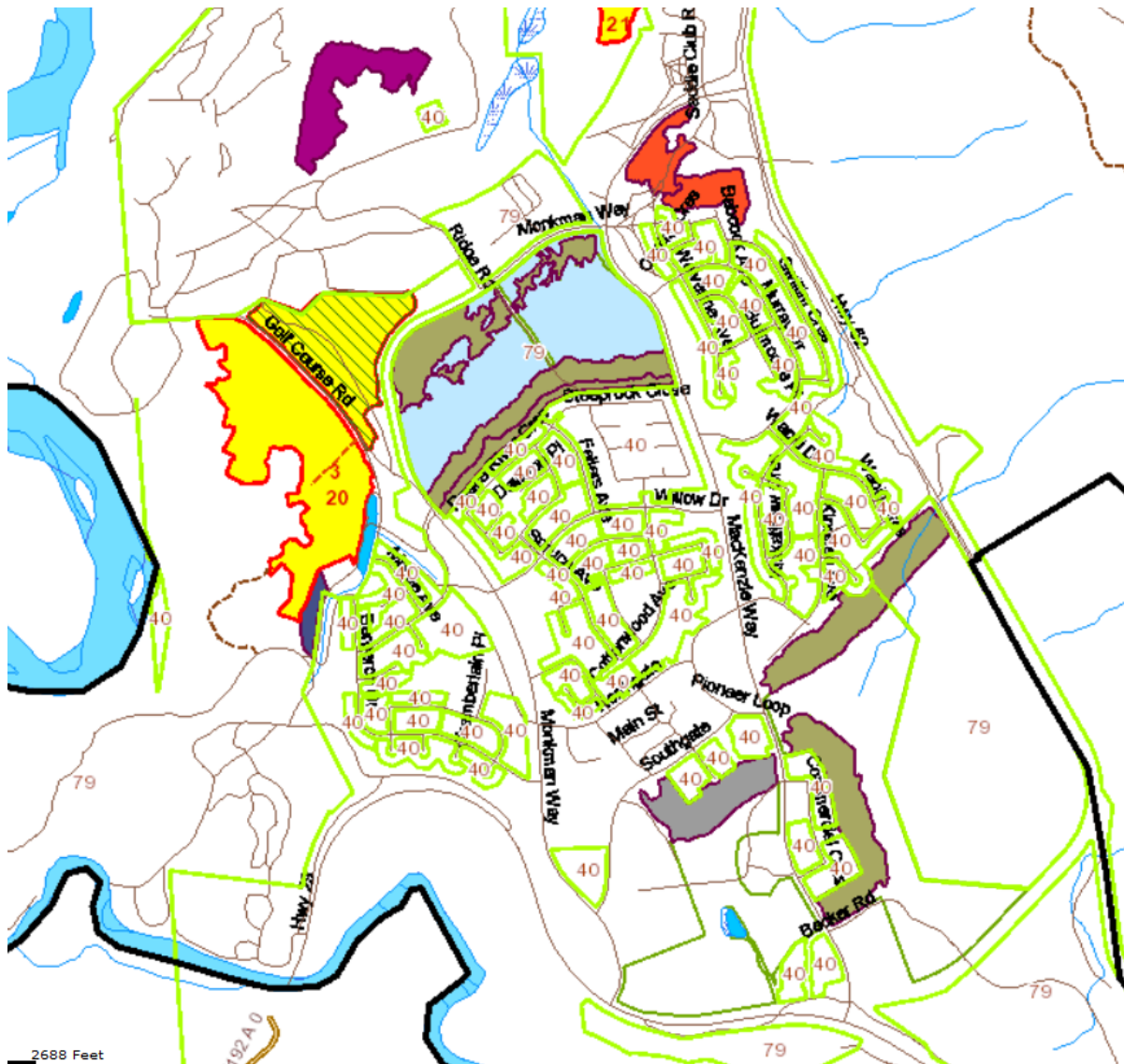
Threat Class Map 2016



Field Notes

Stop 1: Treatment Example From 2006 CWPP – Pipeline

- Prescription. Harvest pine and chip on site; Completed under Licence to Cut; Pre-Community Forest operating.
- Harvested in 2010 in economic downturn under grant program.
- This area is in Community Forest.
- Visually looks ok.
- Buncher and skidder chip the trees on site and spread.
- Note adjacent stand for comparison.
- Some complaints from locals.



Notes:

Field Notes

Stop 2: Behind Trend Hotel - Backlash

- Harvested 2010.
- Log all pine and chip.
- This area had a prescription written by a Professional Forester.
- Some of the town population were upset at the outcome; Contract not renewed.
- Combination of town land and Community Forest land.
- Notice the depth of the chips; Notice regen and planted trees.
- Area is zoned light industrial in Community Plan.

Aerial Photo of Treatment Areas



- Walk through area to Pond Block Note debris chipped; Designated forwarding roads chipped.
- Worksafe – blocking off trails when harvesting occurs.

Notes:

Field Notes

Log the Pine Only



Stop 3: Pond Block

- On town land; Original prescription to harvest all pine and chip on site.
- Over a year of local consultation.
- Must consider Tumbler Ridge community plan.
- Completed a prescription and log plan.
- Faller select leave tree system Remove all dead pine.
- Faller Buncher Forwarder.
- Less tree removal on edges.
- Chipped debris < 20 cm, branches and small stems and tops for \$1,000/ha.
- Some residual trees blew down. Entered a second time reclaimed 3 loads.
- Multi use outcomes from the outset of planning.
- Mountain bike trail.
- Involve the experts, wildfire and silviculture.
- Walk thru area to bike trail.
- Optional view lot block behind public works.

Notes: _____

Field Notes

Pond Block - Aerial View Post Harvest



Planned Mountain Bike Trail Utilizing Planned Forwarding Trails



Field Notes

Pond – Planned for Interpretive Trail Sponsored by the District and School.



Notes: _____

Stop 4: Knob Hill High School

- Proposed interpretive trail head.
- Harvest dead pine only retain all spruce.
- High School to play a significant role in the trail design and management.

The Professionals



Town Lands Pond Block - Harry Officer

CP 3 Block 21 Golf Block Harry, Steve and Rick

Field Notes

Stop 5: CP3 Block 20 Golf Block

- Extensive consultation and public meetings, posters, social media, newspaper adds signage and personal tours.
- Plan for multi use outcomes; Create trail from road. pull back from existing trails and manage trails within block.
- Minimize road construction; Planted pullout immediately.
- Consulted with Wildfire branch on debris options; Recommended to wait a year.
- Second entry done to remove blowdown; 2 loads.
- Plant at 800 SPH spaced from healthy trees.
- SP amended from multi story to single story. Updated stocking standards to allow for a Layered Survey on the stand.
This type of survey is suitable for stand structures that are:
 - Managed on an even-aged management regime, with no planned multiple entry system.
 - Low basal area (<10m²) is retained onsite post-harvest.
 - Stems retained post-harvest are of acceptable health and vigor to contribute to stocking and free growing tallies and the next rotational harvest volumes.
- Arch assessments completed on the block.
- R-O-W width and worksafe management.
- Wildlife concern disturbing the fawns.

CP 3 Block 20 Preharvest



Walk to top of hill

- Blowdown event at initial harvest; Blew down secondary layer on east side of block.
- Trails keep trails intact and clean after harvest.
- Manage town lands simultaneously - Harvest dead pine only and danger trees

Notes: _____

Field Notes

CP3 Block 20 Upper Portion - Blowdown Mini Twister



Stop 6: CP3 Block 21 Horse Stable Block

- CF worked with local horse club members and hiking club to design a harvest that incorporate recreational outcomes.
- Wide R/W at block entrance.
- Previous treatment area AP 3402-17.
- Various trails to manage.
- Rehab block road into wagon trail.
- Trail loop plan; Trail connection; Quality Canyon plans; Snowshoe trail.
- Estimated 13,000m³; Removed 11,300m³; Approx. 300 m³ to Duz Cho tops.
- May have to do a second entry.
- Issue of burning piles close to horse stable; Some comments of the debris left behind on the ground.
- Worksafe issues on block working near standing trees.
- Plan to plant at 800 SPH.

Notes:

Field Notes

CP3 Block 20 Horse Trail Block Pre Harvest



CP3 Block 20 Trail Post Harvest



Field Notes

Aerial Photo CP 3 Block 21 - June 6, 2017



Notes: _____

Stop 7: Remaining Future Wildfire Salvage Treatment Area

- Community Forest land adjacent to town lands.
- No visual requirements in the inventory; 40% mortality polygon to the north.
- What are the steps you would take?
- What treatment would you prescribe?
- What would be some possible other resource enhancement ideas?

Notes: _____

Field Notes

Aerial Photo - June 6, 2017



Map Tool Data

