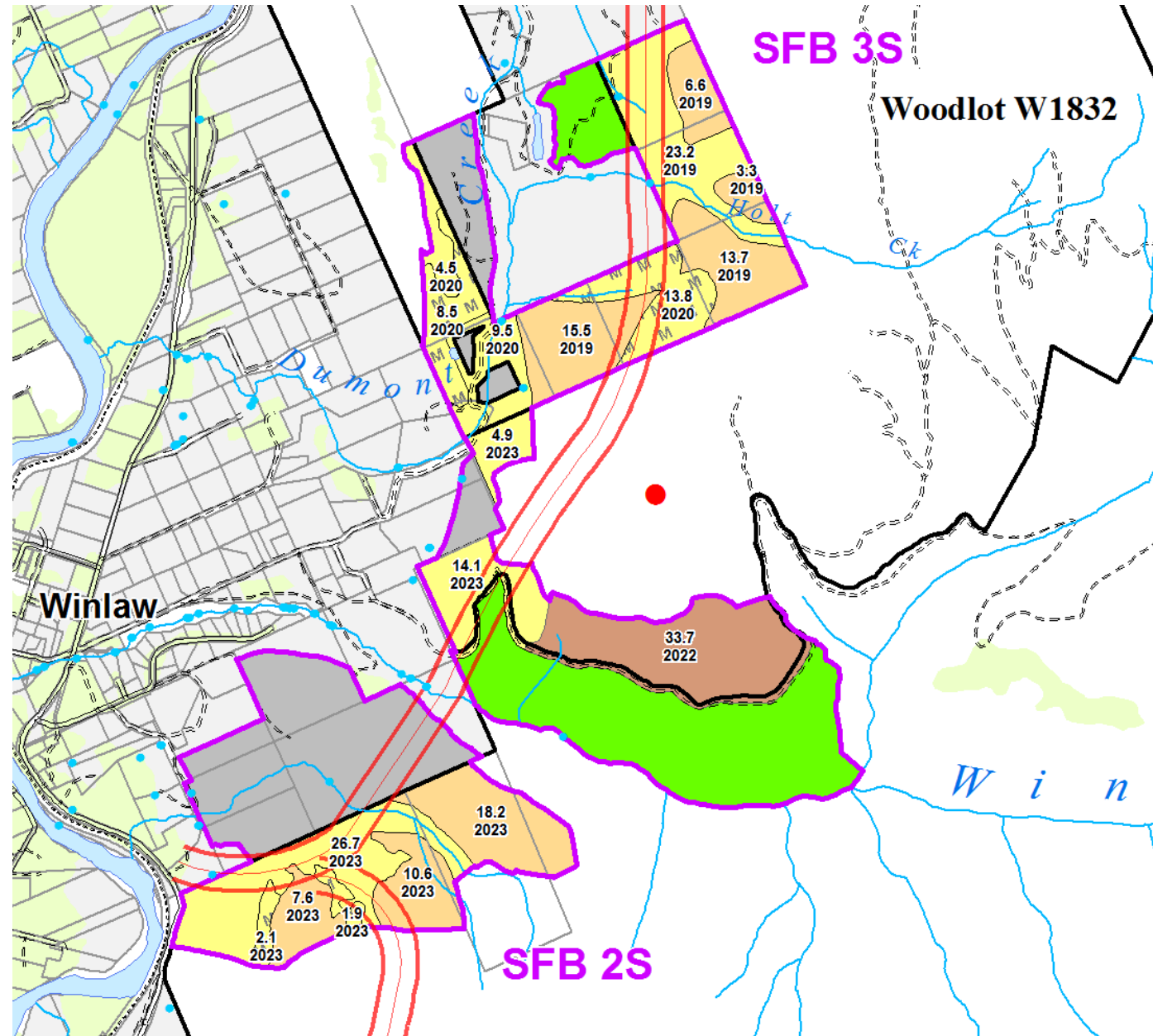
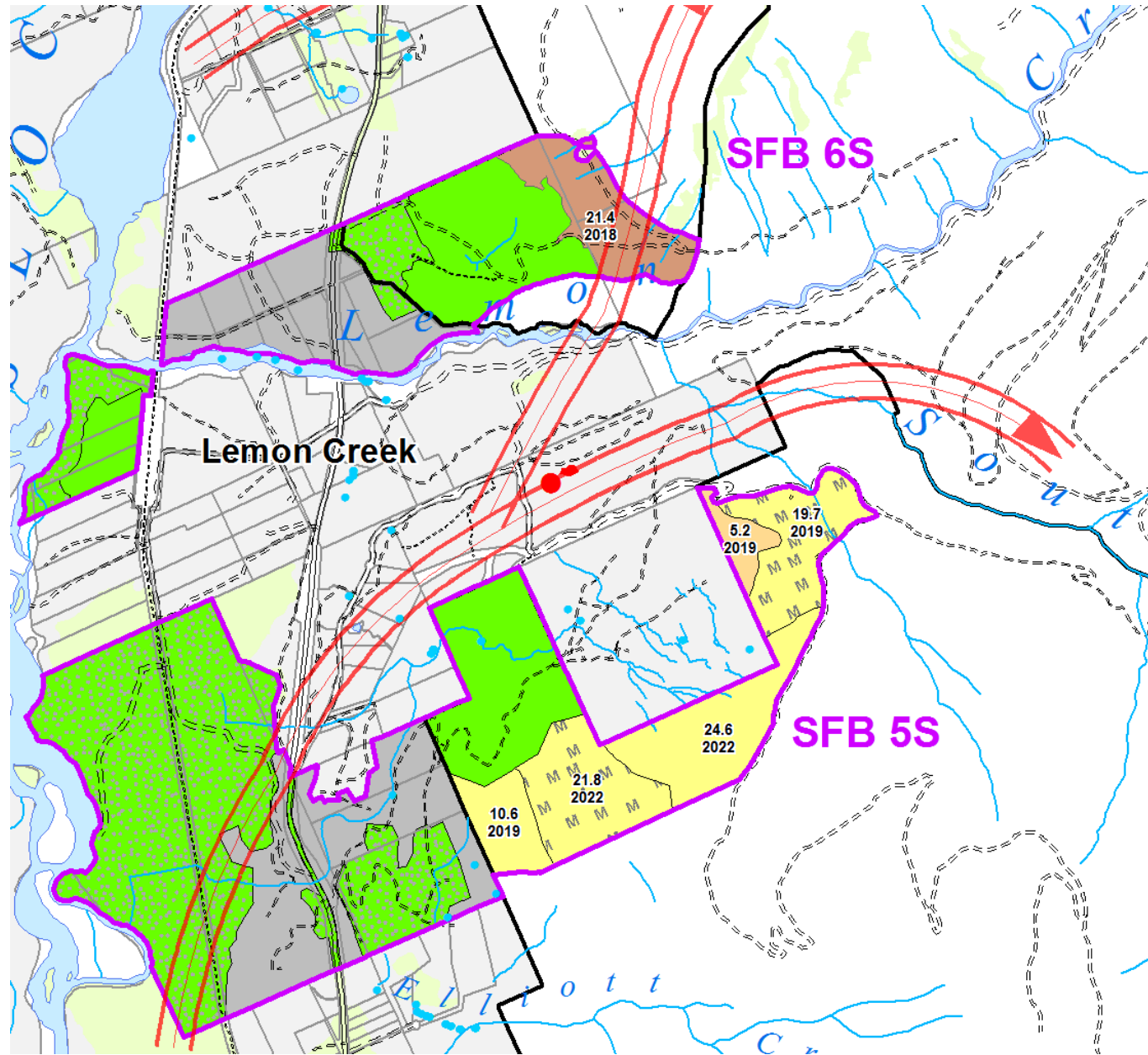


Slocan Valley Strategic Landscape Level Wildfire Protection Plan

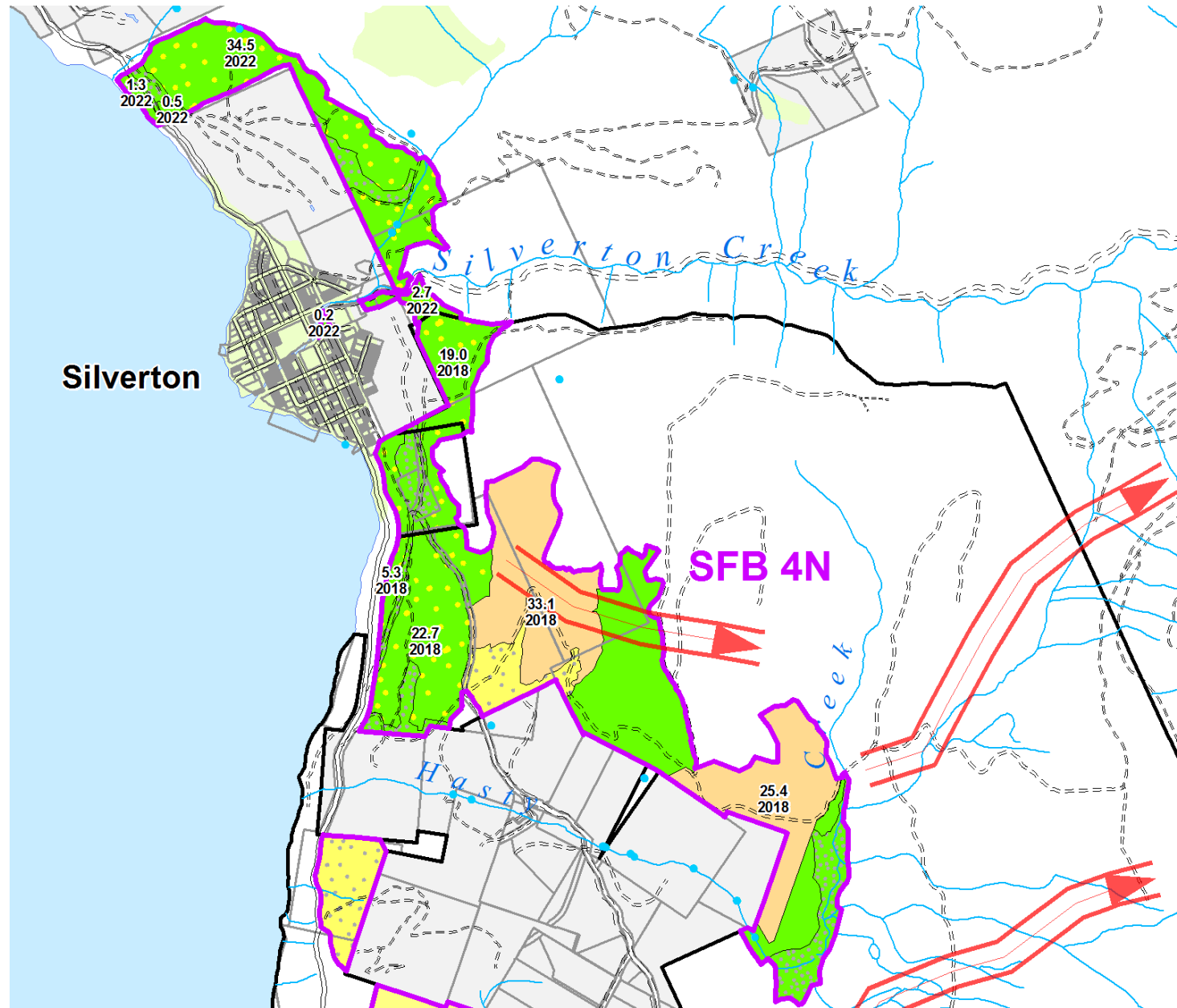


Slocan Valley Strategic Landscape Level Wildfire Protection Plan



Slocan Valley Strategic Landscape Level Wildfire Protection Plan

2017





Slocan Valley Strategic Landscape Level Wildfire Protection Plan by the #'s =

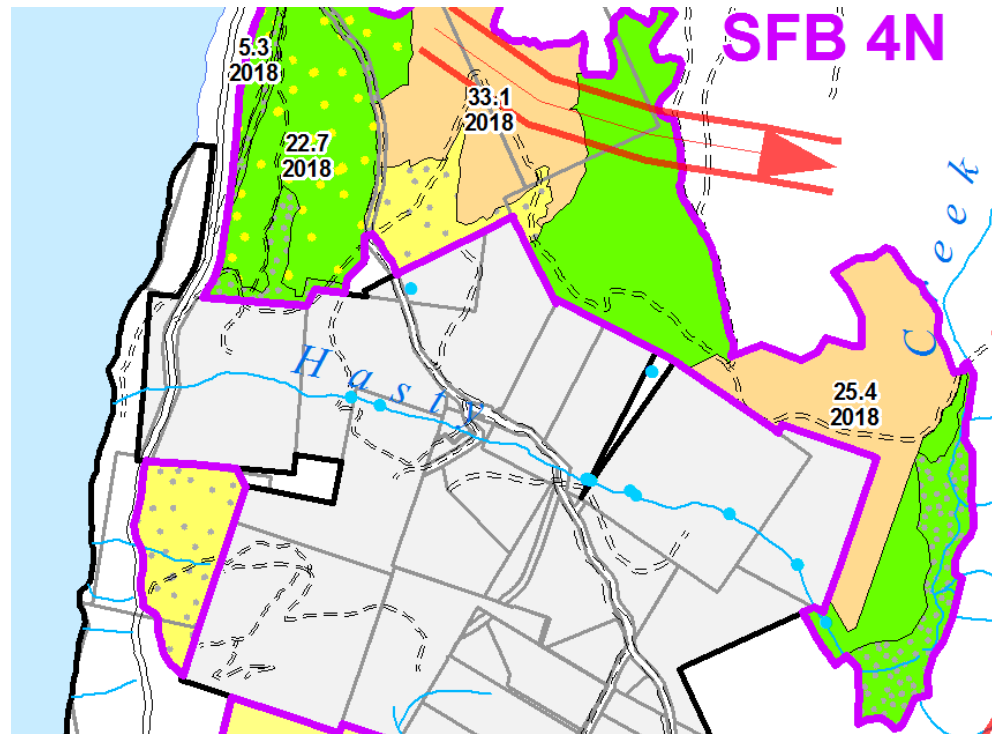
1. 100% of our AAC for the next 6 years
2. 1000+ hectares (on top of the 450ha already done)
3. 12 Landscape Level fuel breaks
4. 12+ full time seasonal employees
5. Cost \$3+ million (total cost = 5.5 million)
6. Cost of fighting 2007 Springer Fire = 11+ million
7. 200+ha (Type 1)
8. 400+ha (Type 2)
9. 100+ha (Type 3)
10. 75+ ha (Type 4)
11. 150+ha (Type 5)

5 Treatment Types

- Type 1 - Wildland Urban Interface Fuel Management
- Type 2 - Post-Harvest Fuel Management
- Type 3 - Machine Based Interface Cleanup
- Type 4 - Fuel Management for Habitat Restoration and Ecosystem Resiliency
- Type 5 - Wildland-Urban Interface Re-Treatment

Type 1 - Wildland Urban Interface Fuel Management

- Classic WUI
- Boots on ground, powersaws, hand work, understory and ground fuel abatement.
- \$7000 to \$7500+ per hectare – too expensive to scale
- Flexible: can treat steep slopes, unstable terrain, close to POD, recreation areas, OGMAs, etc.
- Helps to make fuel breaks continuous.



Treatment Types - Type 1 - Wildland Urban Interface Fuel Management



Treatment Types - Type 1 - Wildland Urban Interface Fuel Management



Type 2 - Post-Harvest Fuel Management

- Partial Cut (shaded fuel break).
- Use fuel management stocking standards
- Small wood to pulp mill.
- Machine pile slash and fuels after harvest wherever possible.
- Hand crew finishes fuel abatement.
- \$2500 per hectare above and beyond obligations
- Treat large areas fast at lower cost.

- Adds a new team member: Logging contractor.

Treatment Types - Type 2 - Post-Harvest Fuel Management

200 m³/ha retained



Finished Product

Treatment Types - Type 2 - Post-Harvest Fuel Management



Treatment Types - Type 2 - Post-Harvest Fuel Management



Type 3 - Fiber Utilization and Clean-up

- Target: non-merch stands with high fuel loads
- Dispose of windfall from pine beetle and misc mortality
- Reduce understory density
- Sell whatever possible to pulp mill
- Machine pile slash and fuels
- Plant using fuel management stocking standards if required

Type 3 - Fiber Utilization and Clean-up

- Target: non-merch stands with high fuel loads



Type 3 - Fiber Utilization and Clean-up

- Target: non-merch stands with high fuel loads



Type 4 - Fuel Management for Habitat Restoration and Ecosystem Resiliency

- Target: former fire maintained ecosystems.
- Found on steep, south west facing slopes, low elevation, in main side drainages.
- Ecologically unique areas in CFA.
- Goal: Re-introduce fire.
- Initial Goal: Reduce understory density, make safe to burn.
- Hand crew – most sites not suited for machines.
- Cost: \$1250/ha prep + burn costs

Treatment Types - Type 4 - Fuel Management for ER

This place.....



Image © 2018 DigitalGlobe
Image Landsat 8 Copernicus
Image © 2018 CNES / Airbus
Image © 2018 Province of British Columbia

Google earth

Treatment Types - Type 4 - Fuel Management for ER

Prep: Reduce fuel loads and ladder fuels near leave trees



Treatment Types - Type 4 - Fuel Management for ER

Prep: Full WUI along unit bdry – fire guard Step #1



Treatment Types - Type 4 - Fuel Management for ER

Writing Burn Plan, with Arrow Fire Zone

Light-up: Spring 2018



Treatment Types - Type 5 - Wildland-Urban Interface Re-Treatment

Type 5 - Wildland-Urban Interface Re-Treatment

- Maintenance on treated areas.
- Re-treat 7 to 10 years after initial WUI work
- Do it while conifer regen is small, use brush saws.
- Resulting cut fuel loads light, lop and scatter.
- Hand crew work
- reduction in cost from initial investment = 92%

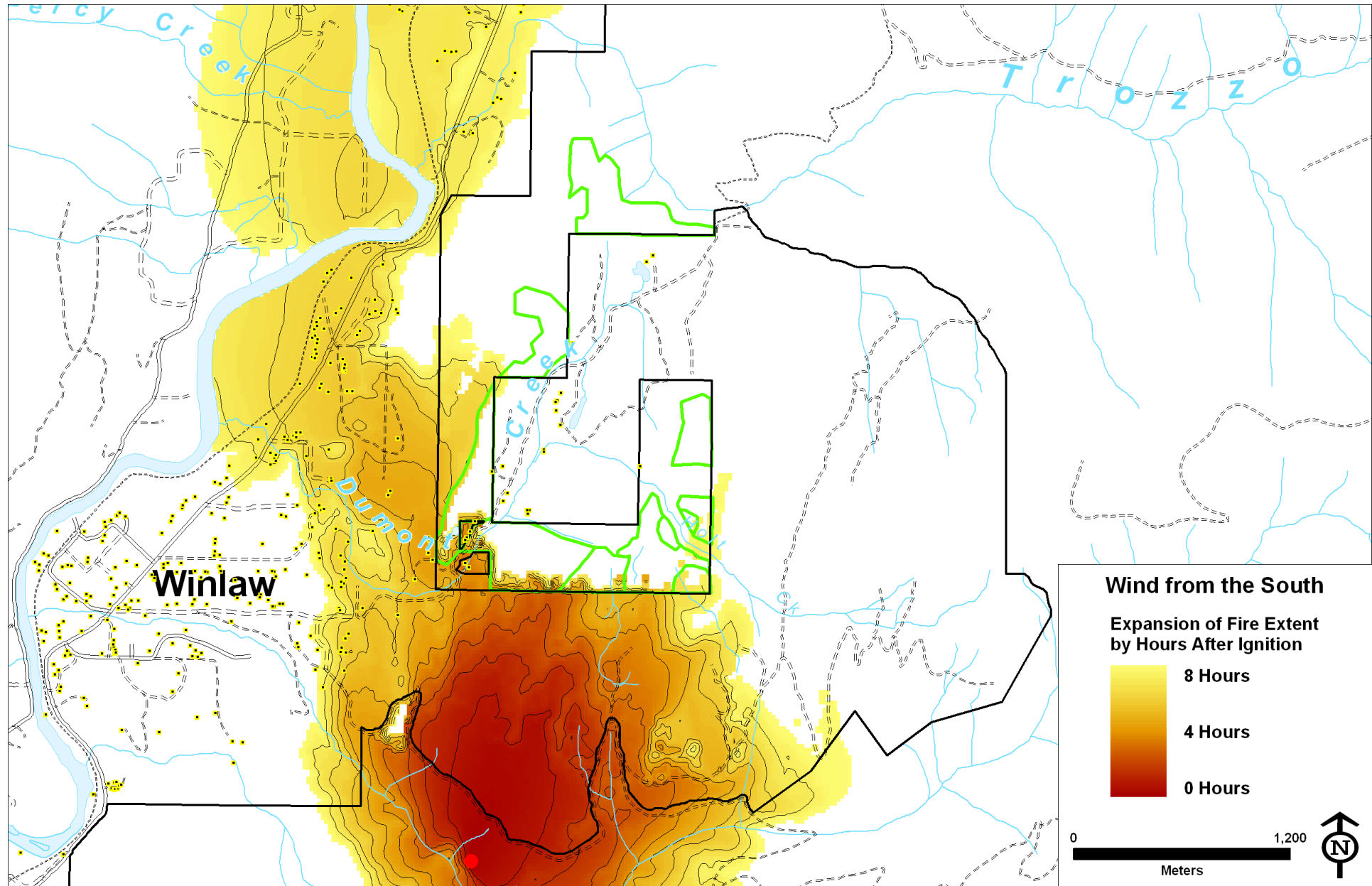
Treatment Types - Type 5 - Wildland-Urban Interface Re-Treatment After



4 key points to remember:

1. Community buy-in, building trust, education and lots of field trips are fundamental to success.
2. Need a co-ordinated landscape level approach to
 - show rationale for investments
 - achieve management goals.
3. Small projects have limited benefits other than educational.
4. Need at least 25+ ha for operational efficiency and to see reduction in fire behaviour.

Elephant in the room – Private Land



SIFCo's best idea to date about Private Land

- When doing LLP erase all ownership layer
- Private Land that fall within LLP become eligible for funding if:
 - Size of acreage is greater than X (for example 5 acres)
 - Home owner is willing to do all work required within X to be Fire Smart (at owner's expense)

Other big questions:

1. How to go about scaling ...
 - FRPA objective?
 - Tenure reallocation in the WUI?
 - BCTS mandate expansion?
 - CFA Woodlot expansions?
2. Who can access funding?

What we don't want



A photograph of a dense forest of tall, thin evergreen trees, likely spruce or fir, with a mossy forest floor. The trees are arranged in a somewhat regular pattern, and the ground is covered in green moss and fallen branches. The sky is visible through the canopy, appearing overcast.

Thank You!

Visit us @ www.sifco.ca

WILDFIRE AND CLIMATE CHANGE CONFERENCE



LEARN-SHARE-ACT

**JUNE 26TH-28TH
NELSON, BC**

**AT THE PRESTIGE
LAKESIDE RESORT**

Ecosystem Resiliency,
Community Protection &
Landscape Level Management.



SIFCo



Register today at
www.kootenaywildfire.ca