



The 2017 Harrop Wildfire

Lessons from a community on evacuation alert

Erik Leslie, RPF

Forest Manager

Harrop-Procter Community Forest

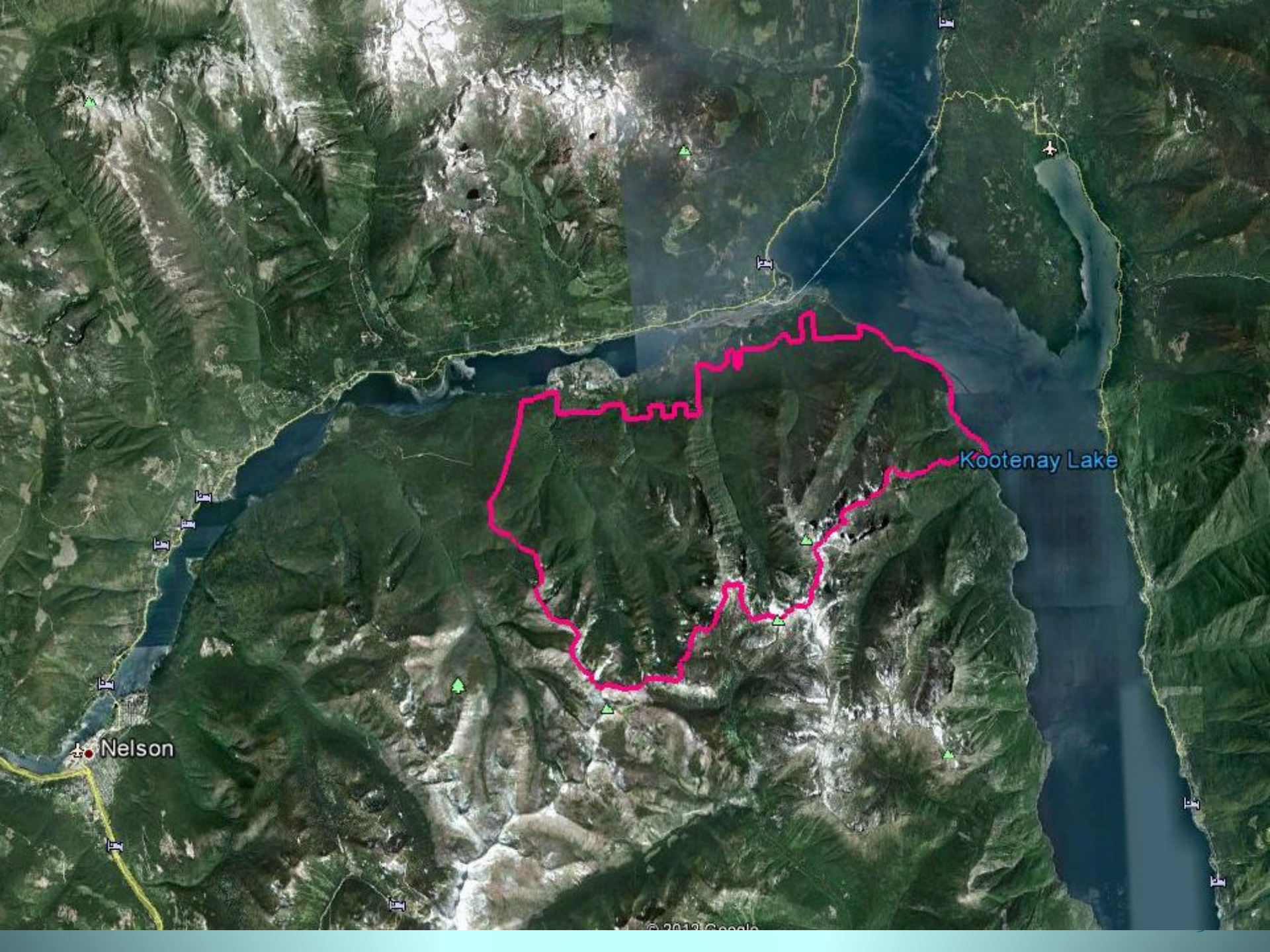
Presented by Susan Mulkey

BCCFA

Outline

- The Harrop 2017 wildfire
- Lessons learned





Kootenay Lake

Nelson







July 27—lightning strike



Access? Fuel breaks?















Hello community,

July 31st

Lots of action today on the Harrop wildfire. The fire has expanded somewhat to the east. However the fire has not moved any closer to Harrop.

[...]

So we now will have a heavy lift helicopter, a 20-person ground crew, and one piece of heavy equipment working on the fire. There is a new staging area at the end of the East Harrop Mainline road (at the Mill Lake trail head).

Today the decision was made to start work on a machine-built fire guard, to be constructed with an excavator starting tomorrow. The machine guard will start at the end of the East Harrop road. This will involve crossing the upper reaches of Harrop Creek on a temporary log structure. I am personally involved in supervising this work.

Best wishes to everyone.

Erik

Hello everybody,

August 2nd

As per Ramona's post to the group this afternoon, the fire continued to grow today to close to 1,500 ha. **While this may seem alarming**, the good news remains that the direction of spread is to the south and southeast into high elevations in West Arm Park.

The crews and heavy helicopter made significant progress today. Fire intensity has dropped in many areas compared to yesterday afternoon, largely as a result of suppression efforts.

We are building a machine guard around the north end of the fire as a contingency in case the current containment lines are breached.

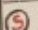


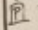

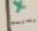

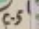
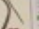
Several people asked about my reference to the fire being 6km from Harrop while the Ministry bulletins have listed 10km. I have measured the distances in Google Earth. According to my measurements the fire started about 8km south of Harrop. In the first couple days it spread so that it was a little over 6km from Harrop. It has not moved further north in the last 2 days or so.

I have to say I am very impressed with the capabilities and the professionalism of the crews. They are doing a great job. I personally thanked them on behalf of the community when we finished work this evening. I will send out some photos later.

Erik

AUG 04 1600+ HA.

VR1 - KM OV
WIS - HOT - AREA
GMU - 212 - PAUL

- LEGEND**
-  STAGING
 -  FIRST AID
 -  HELPAD (ESTABLISHED)
 -  HELPAD (PROPOSED)
 -  PUMP SITE
 -  RELAY TANK
 -  AERIAL EXTRACTION LITE
 -  ESCAPE ROUTE
 -  ROAD LAY



N 1382 AUG 07 2126

OPS - SESS - S PHELPS
BRANCH - SE 75 - B STEVENS
MEDIC 1382 JACQUELINE
250-517-9300 + MARGARET ANN
EQUIPMENT - ERIC
GORD DAN OLIVER

COMMUNICATIONS
REPEATER - GRN TNS
SIMPLEX - NICKEL
GROUND AIR - NICKEL
ROAD - REEF 165.73

VR! - KM OV BRIAN
DYZ - 214 PAUL
WIS - 407 MARK
YGK - ASTAR BILL



LEGEND

- (S) STAGING/SAFE ZONE
- (+) FIRST AID
- (H) HELIPAD (ESTABLISHED)
- (H) HELIPAD (PROPOSED)
- (P) PUMP SITE
- (T) RELAY TANK
- (R) RAPPEL EXTRACTION SITE
- (X) ESCAPE ROUTE
- (---) HOSE LAY



FIELD SAFETY PLAN

NO.	NAME	PHONE	ADDRESS	STATUS
1	OPS - SESS - S PHELPS			
2	BRANCH - SE 75 - B STEVENS			
3	MEDIC 1382 JACQUELINE	250-517-9300		
4	EQUIPMENT - ERIC			
5	GORD DAN OLIVER			
6	COMMUNICATIONS			
7	REPEATER - GRN TNS			
8	SIMPLEX - NICKEL			
9	GROUND AIR - NICKEL			
10	ROAD - REEF 165.73			
11	VR! - KM OV BRIAN			
12	DYZ - 214 PAUL			
13	WIS - 407 MARK			
14	YGK - ASTAR BILL			

















VE76865



procterharropcommunitynews@googlegroups	8/2/2017	3	Wednesday evening fire update, and clarification
procterharropcommunitynews@googlegroups	8/3/2017	2	fire update Thursday evening
procterharropcommunitynews@googlegroups	8/4/2017	2	Friday evening fire update
procterharropcommunitynews@googlegroups	8/5/2017	2	fire update Saturday evening
procterharropcommunitynews@googlegroups	8/7/2017	2	fire update Monday evening
procterharropcommunitynews@googlegroups	8/8/2017	2	fire update and map Tuesday
procterharropcommunitynews@googlegroups	8/8/2017	2	more detailed map of fire
procterharropcommunitynews@googlegroups	8/9/2017	3	fire update Wednesday evening
procterharropcommunitynews@googlegroups	8/10/2017	2	Thursday evening fire update and photos
procterharropcommunitynews@googlegroups	8/11/2017	2	fire update Friday evening
procterharropcommunitynews@googlegroups	8/14/2017	3	fire update Sunday evening
procterharropcommunitynews@googlegroups	8/14/2017	2	Mount Irvine fire report-- nothing found yet
procterharropcommunitynews@googlegroups	8/15/2017	3	Harrop fire update Tuesday evening
procterharropcommunitynews@googlegroups	8/17/2017	3	fire update Thursday evening
procterharropcommunitynews@googlegroups	8/23/2017	3	Harrop fire--photos and updated map
procterharropcommunitynews@googlegroups	8/25/2017	2	Fire update Friday evening
procterharropcommunitynews@googlegroups	8/29/2017	3	Fire update Tuesday evening
procterharropcommunitynews@googlegroups	8/31/2017	2	Fire update--spotting into Narrows
procterharropcommunitynews@googlegroups	8/31/2017	3	fire update Thursday evening
procterharropcommunitynews@googlegroups	9/1/2017	2	quick fire update Friday evening
procterharropcommunitynews@googlegroups	9/3/2017	2	update on fire guard
procterharropcommunitynews@googlegroups	9/3/2017	2	fire update & public meeting Monday
procterharropcommunitynews@googlegroups	9/5/2017	3	fire update and map of emergency guard
procterharropcommunitynews@googlegroups	9/6/2017	2	fire update Wednesday evening



August 13th :
Our lucky day



August 31th : Wind





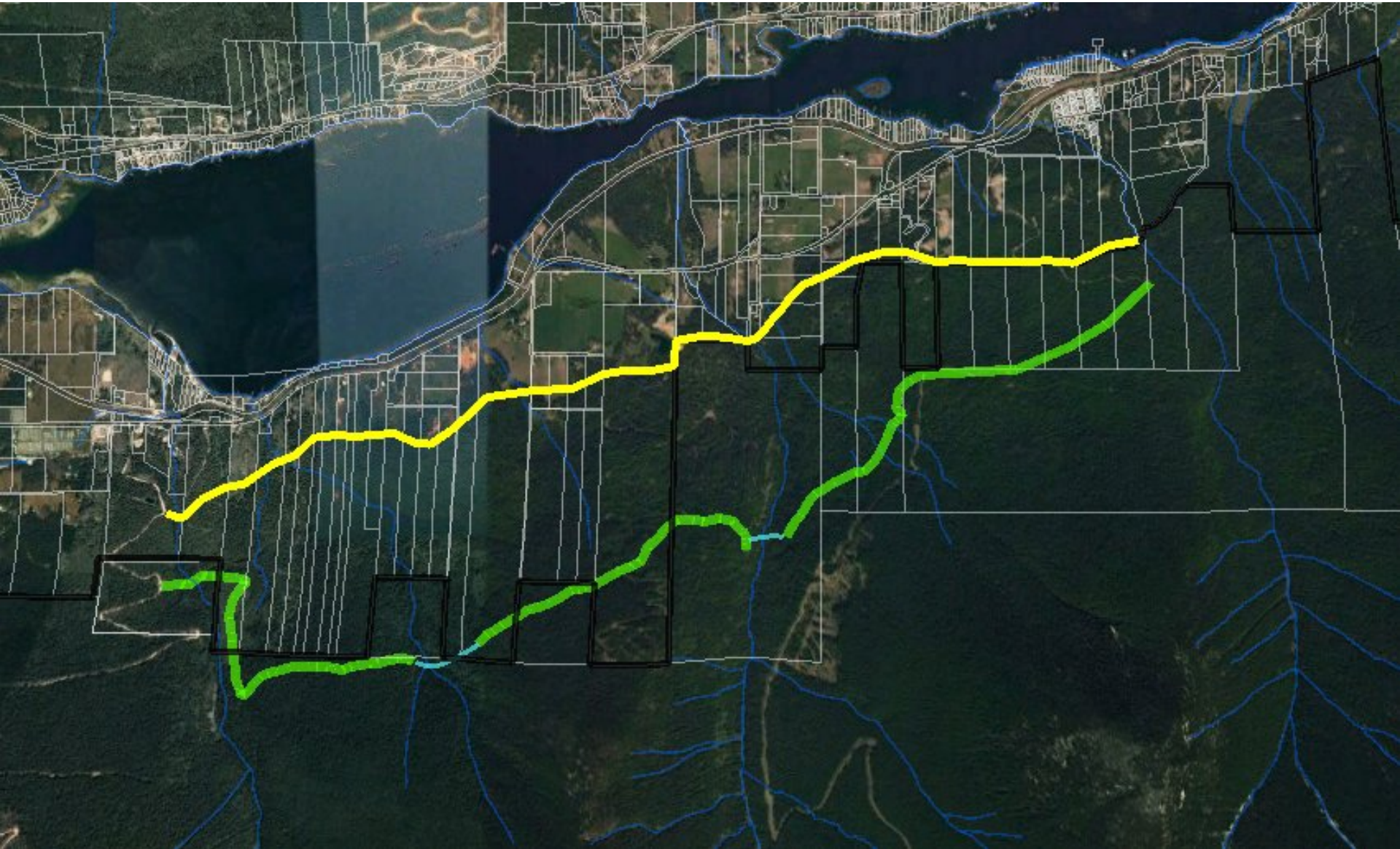
Evacuation Alert Issued for Harrop, Procter, Sunshine Bay, Kootenay Lake Village

August 31, 2017

Due to recent changes in activity of the Harrop Creek wildfire, the Regional District of Central Kootenay has issued an Evacuation Alert for 486 properties within Harrop, Procter, Sunshine Bay and Kootenay Lake Village. See map.

This Evacuation Alert has been issued to prepare residents to leave at a moment's notice should the fire threaten lives or properties. Although there is no requirement for residents and visitors to leave at this time, it is recommended that preparations should be made including the relocation of livestock, trailers, and boats. This action can only take place within the Evacuation Alert phase as there is only 1 access/egress route that depends on the cable ferry. In the event of an Evacuation Order, the ferry would be restricted to vehicles and passengers only, due to limited time and ferry capacity. Absolutely no trailers will be allowed.

All RDCK residents, businesses, and visitors are encouraged to sign up to the RDCK Emergency Alert system which will contact users when an emergency or disaster strikes in their area and action is required. To sign up, go to:









September 20th : Evacuation Alert lifted

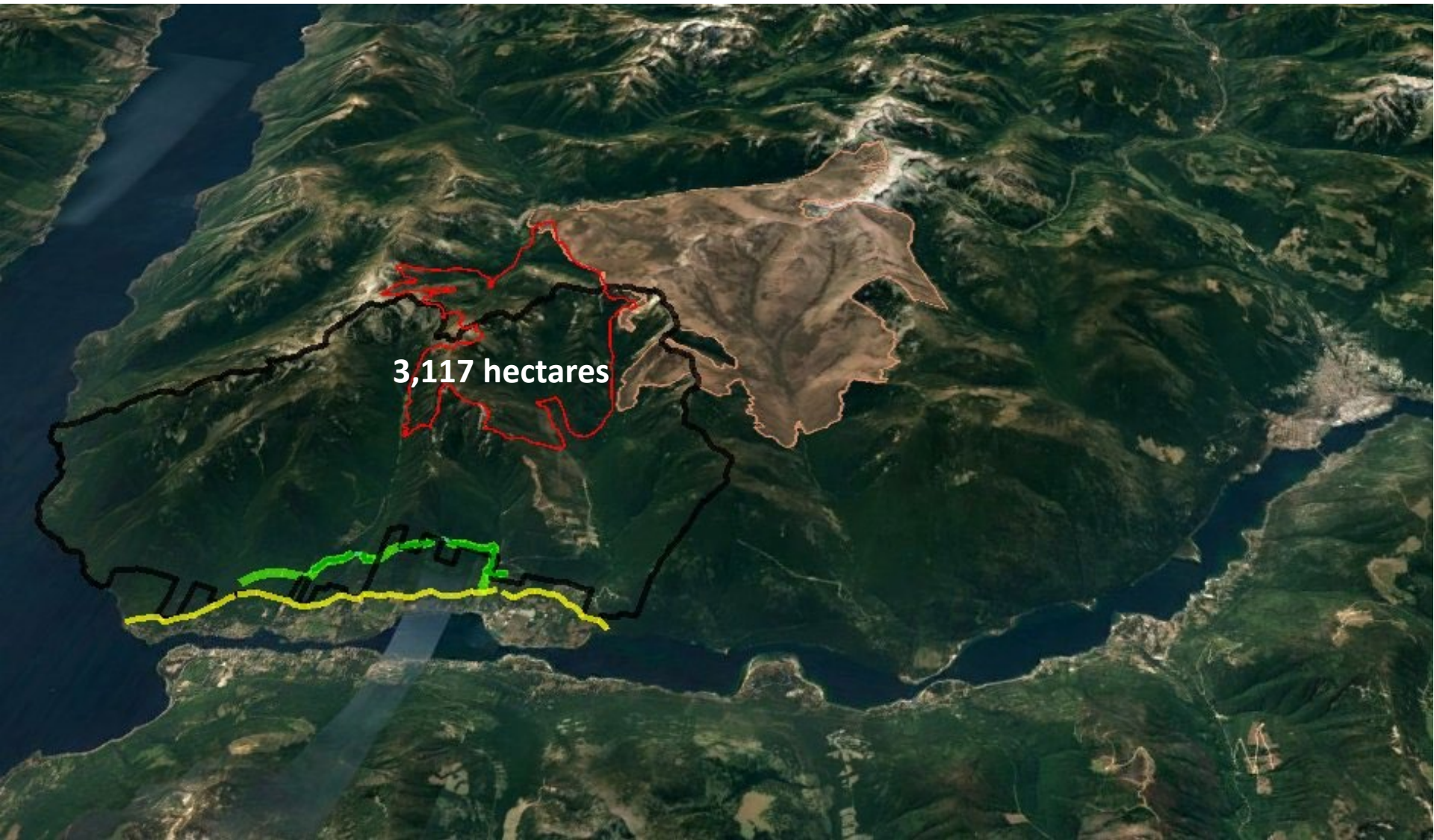
THANK



YOU



FIRE FIGHTERS



3,117 hectares









Lessons learned—Harrop fire

- Quick decisions paid off
- Need access
 - No access, no resources
- Terrain is highly limiting
- Communicate, communicate
- Pre-existing relationships are essential
 - Phone numbers and email addresses on hand
- Trust was essential for quick, effective *tough* decisions
 - Wildfire Branch, Forest District, licensee, public



Lessons learned—The Future

- Expect more
- Pre-planning is essential
 - Integrate with forest management
 - Plan access, stream crossings
 - Input from local Fire Zone
- Develop landscape-level fuel breaks
 - Invest in access and fuel breaks
- Adapt logging plans, stocking standards, timber supply
- We can build community consensus around fire





Thank you!

ErikL@netidea.com
www.hpcommunityforest.org