

# Williams Lake Community Forest

## Business and Community Collaboration

BCCFA CONFERENCE

JUNE 13, 2019

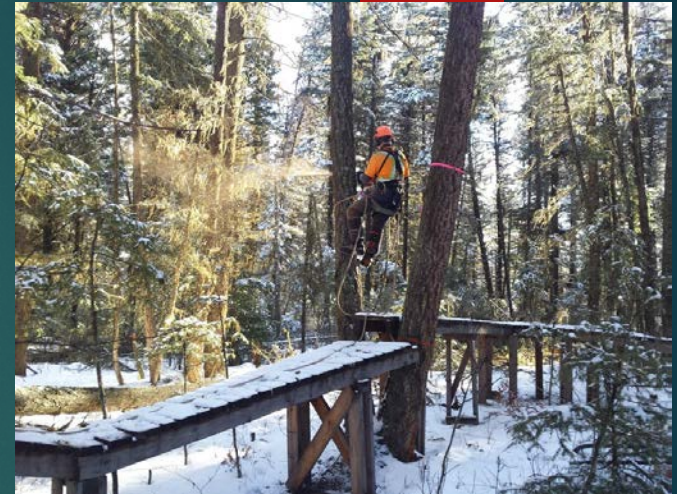
MISSION, BC





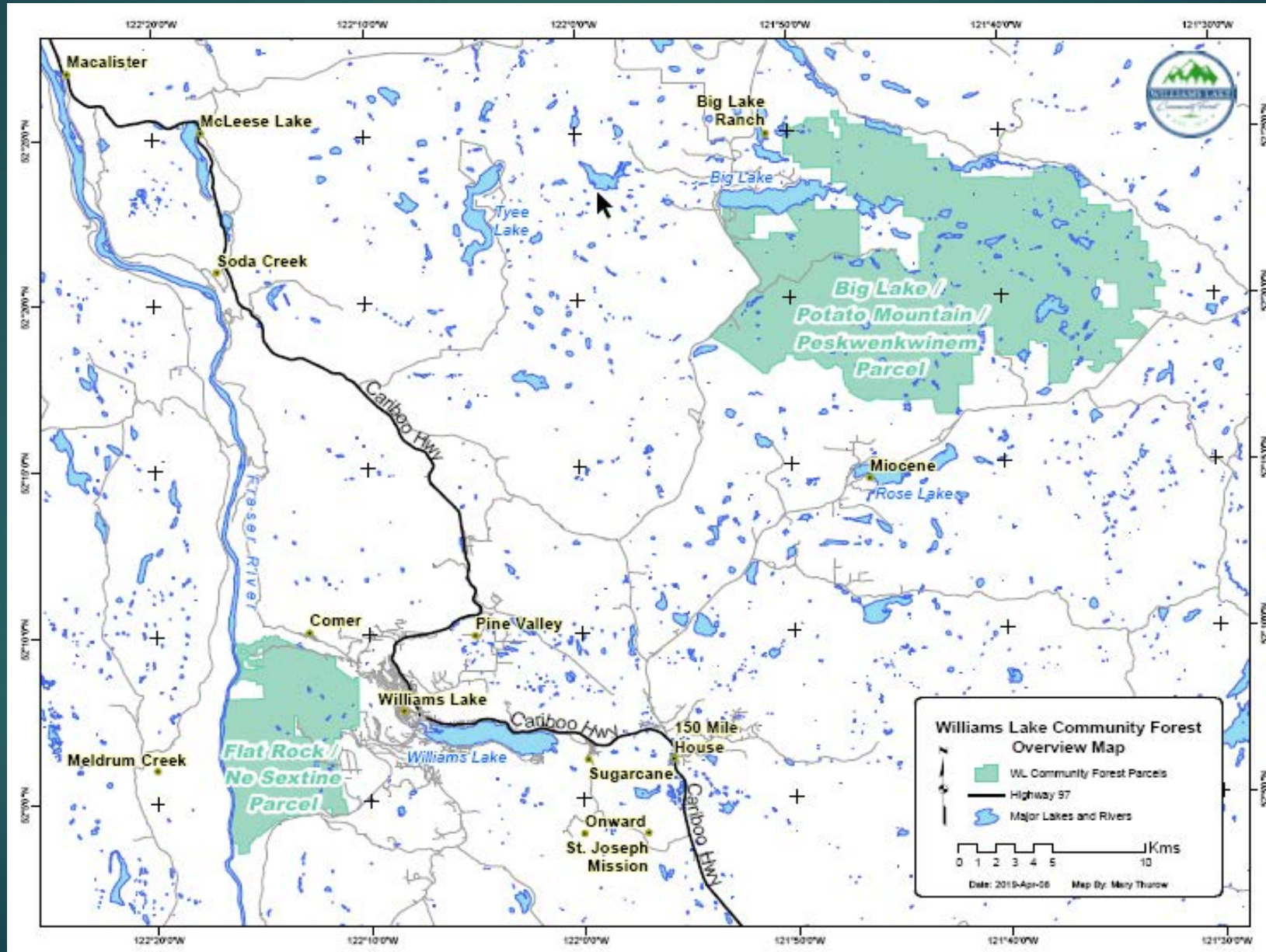
# Williams Lake Community Forest Overview

- ▶ WL Community Forest LP
- ▶ 50/50 Partnership
  - ▶ Williams Lake Indian Band
  - ▶ City of Williams Lake
- ▶ Annual Allowable Cut of 40,000m<sup>3</sup>





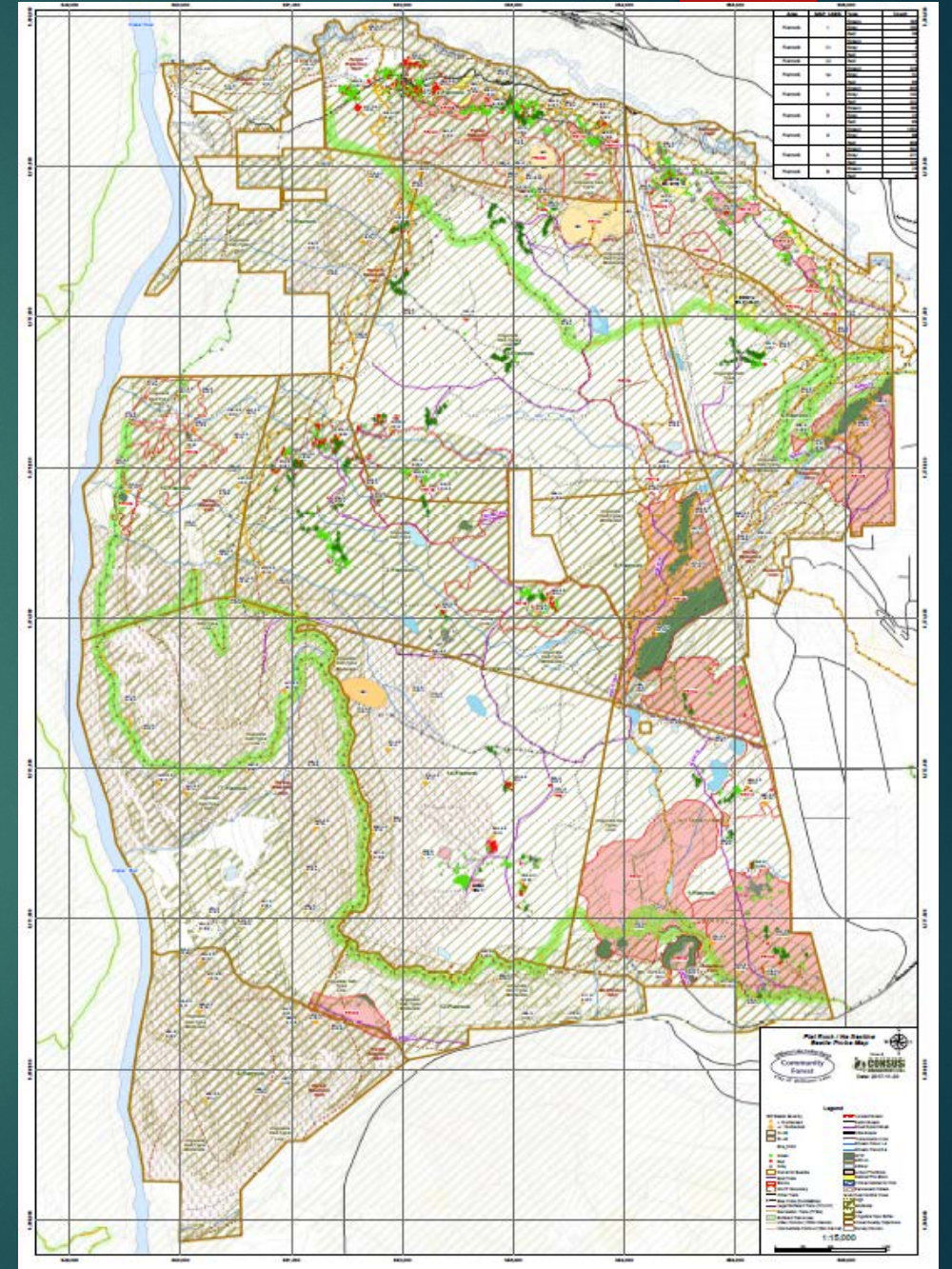
# Williams Lake Community Forest Overview





# Williams Lake Community Forest Overview

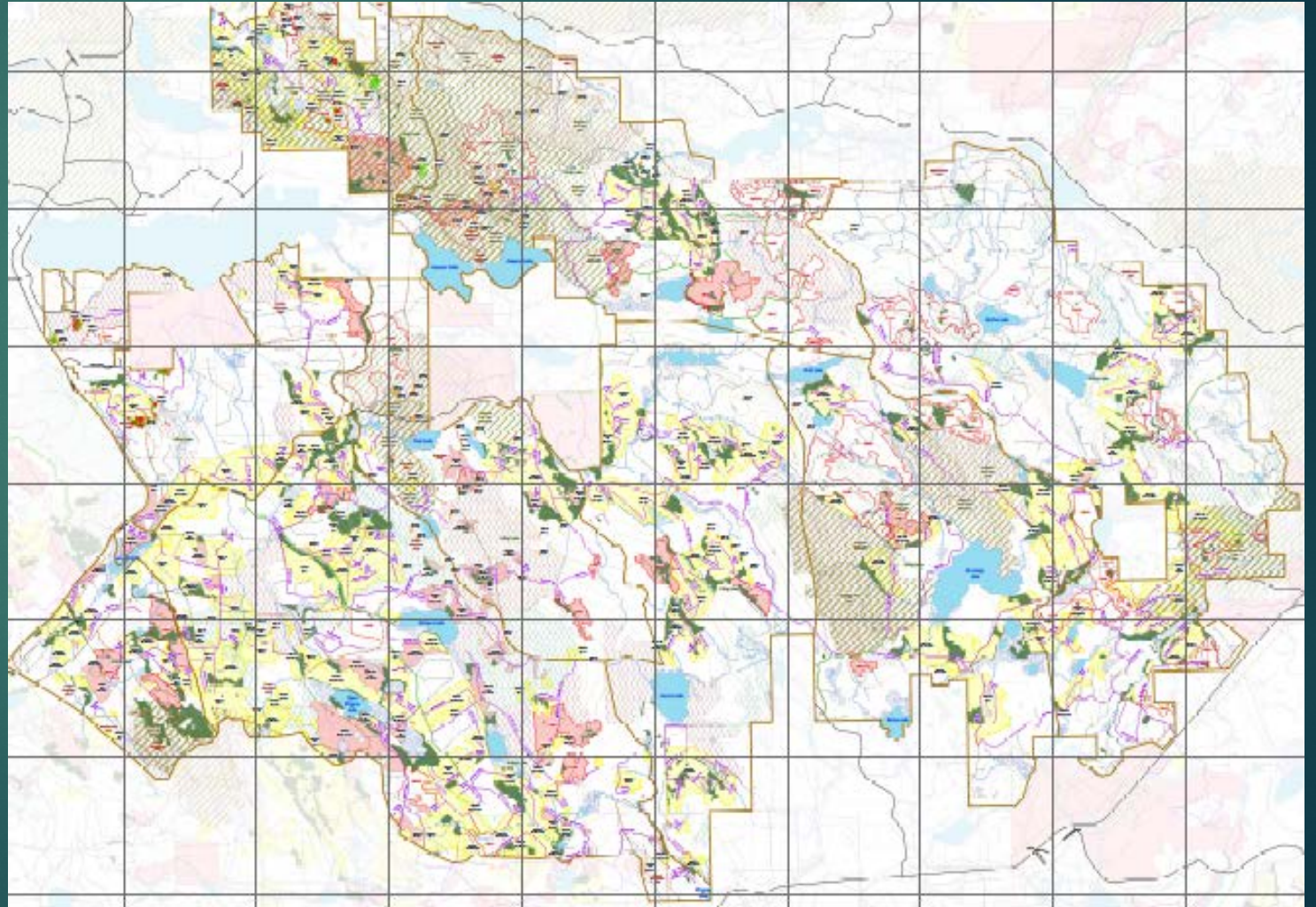
Flat Rock - Ne Sextine





# Williams Lake Community Forest Overview

Big Lake –  
Peskwenkwinem

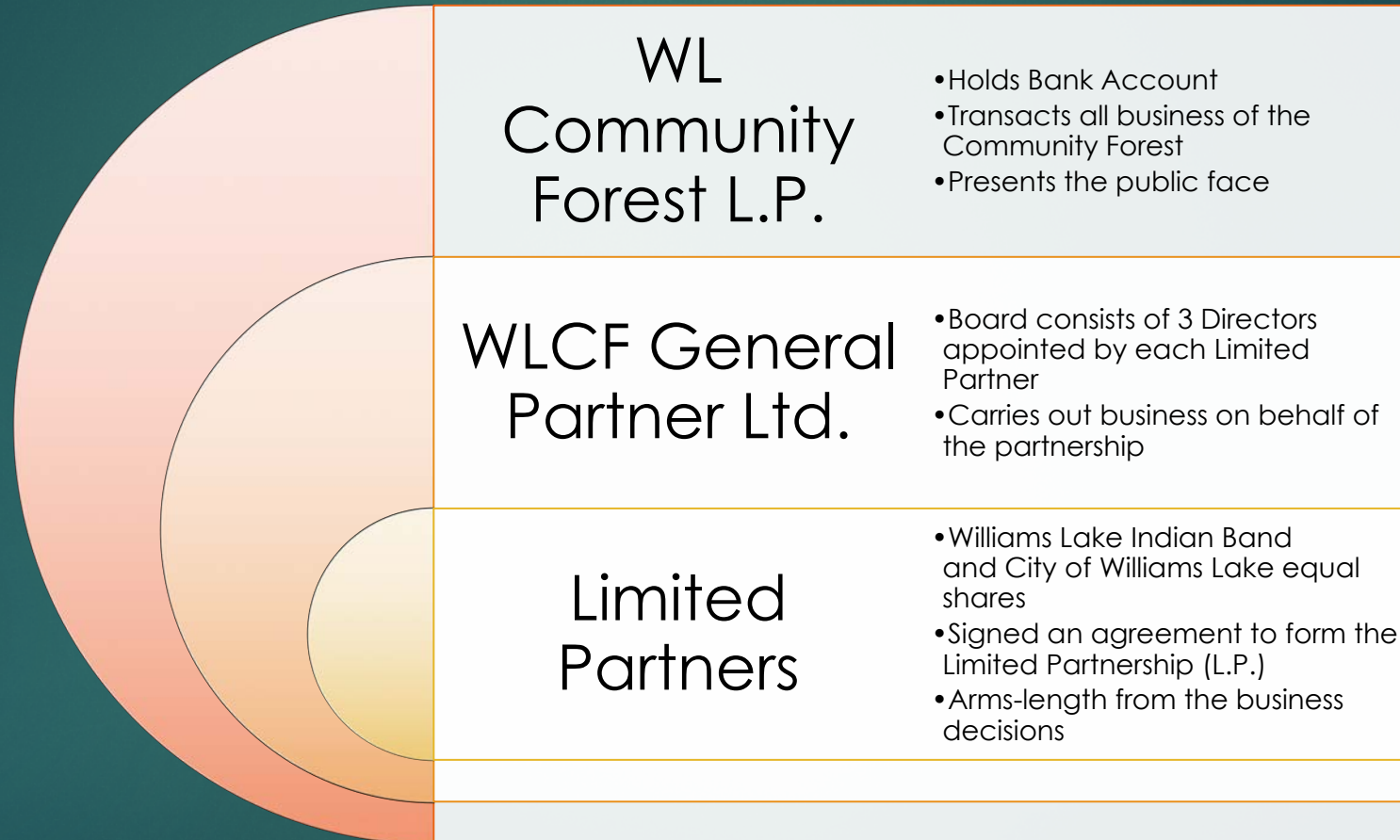




# Corporate Structure

## WL Community Forest LP

6



# Legal Entity Partners

7

## Band and City

- ▶ Create the WLCF General Partner Ltd.
- ▶ Each appoint 3 Directors to the Board of the WLCF General Partner Ltd.
  - ▶ At least two at arms length from Chief or Mayor and Councils
- ▶ Each holds 499 shares out of 1000

## WLCF General Partner Ltd.

- ▶ Conducts all the business on behalf of the partnership
  - ▶ Through WL Community Forest LP
- ▶ Creates policy and procedures
- ▶ Holds no assets
- ▶ Determines income distribution
- ▶ Holds 2 shares out of 1000



# Legal Entity

## WL Community Forest LP

- ▶ Public face of business
- ▶ Mailing address on Reserve
- ▶ Holds the CF Agreement
- ▶ Has the bank account and books
- ▶ Enters contracts and pays bills
- ▶ Employs all staff



# Legal Entity

## Board of Directors

- ▶ 3 Directors appointed by each partner
  - ▶ Arms Length from the partners
- ▶ Conduct all the business on behalf of the Limited Partnership
  - ▶ Hire manager, let contracts, manage finances, approve policy etc.
  - ▶ Ensure public involvement, consultation and communication
- ▶ Takes input from and responds to Standing Committee



# Standing Committee on Resource Values and Interests

10

- ▶ Established in 2014 in order to provide grass roots input and review of plans and management activities.
- ▶ Community members representing the interests of adjacent or neighbouring communities and licensed resource users





# Harvesting Operations

- ▶ Large Scale
  - ▶ Borland Creek Logging
    - full phase contractor
    - wholly owned by WLIB
- ▶ Small Scale
  - ▶ Tom Alphonse Contracting
    - Specializing in selection harvesting





# Silviculture Operations

- ▶ Intensive Forest Management

- ▶ Spacing
- ▶ Cone Picking
- ▶ Fertilization
- ▶ Ungulate Winter Range improvement

- ▶ Diverse Crews

- ▶ Alkali Resource Management
- ▶ Chilcotin Plateau
- ▶ Xatsull Developments
- ▶ Borland Creek Logging





# Sugar Cane Archaeology

- Wholly owned by WLIB
- Key Relationship being built through business

13

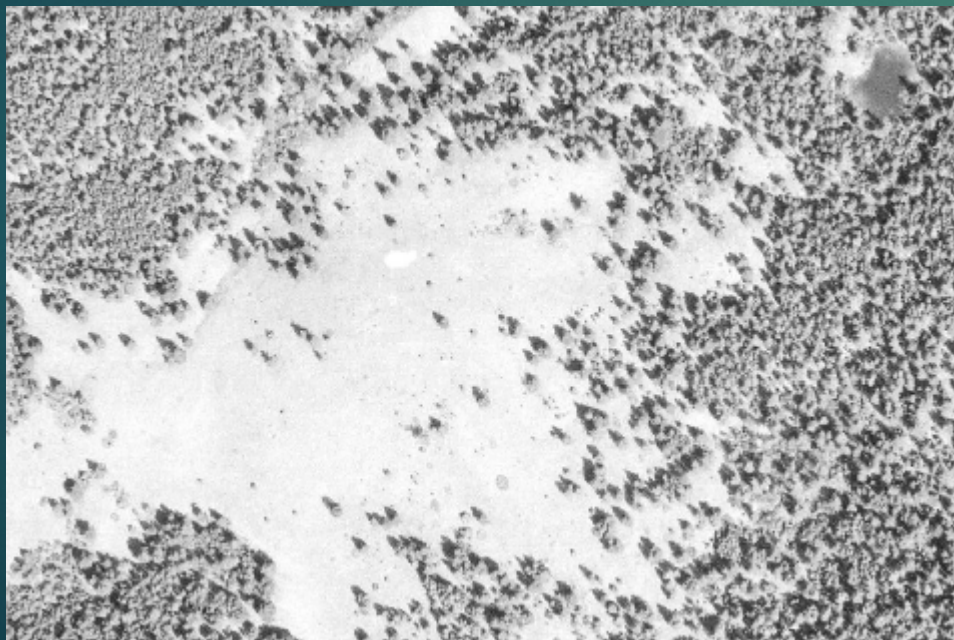




# Fire History Research

## Flat Rock - Ne Sextine

1972



2012





# Grassland Restoration





# Forest Education Tours

16

- ▶ WLIB Elders Tours
- ▶ Naturalist Club
- ▶ 200 student days  
K to Grade 8





# 2018 Strategic Planning

## *Five Strong and Integrated Pillars*

17

- ▶ Strong Positive Partnership
- ▶ Sustainable Forest Management
- ▶ Respect for Culture and Heritage Resources
- ▶ Community Engagement and Education
- ▶ Long Term Financial Sustainability





An aerial photograph showing a vast, dense forest in the foreground. In the middle ground, a town with various buildings and parking lots is visible. To the right of the town, a large, bright blue lake is situated. The background features rolling hills and distant mountain ranges under a clear blue sky with some light clouds.

Thank you

[www.willamslakecommunityforest.com](http://www.willamslakecommunityforest.com)