



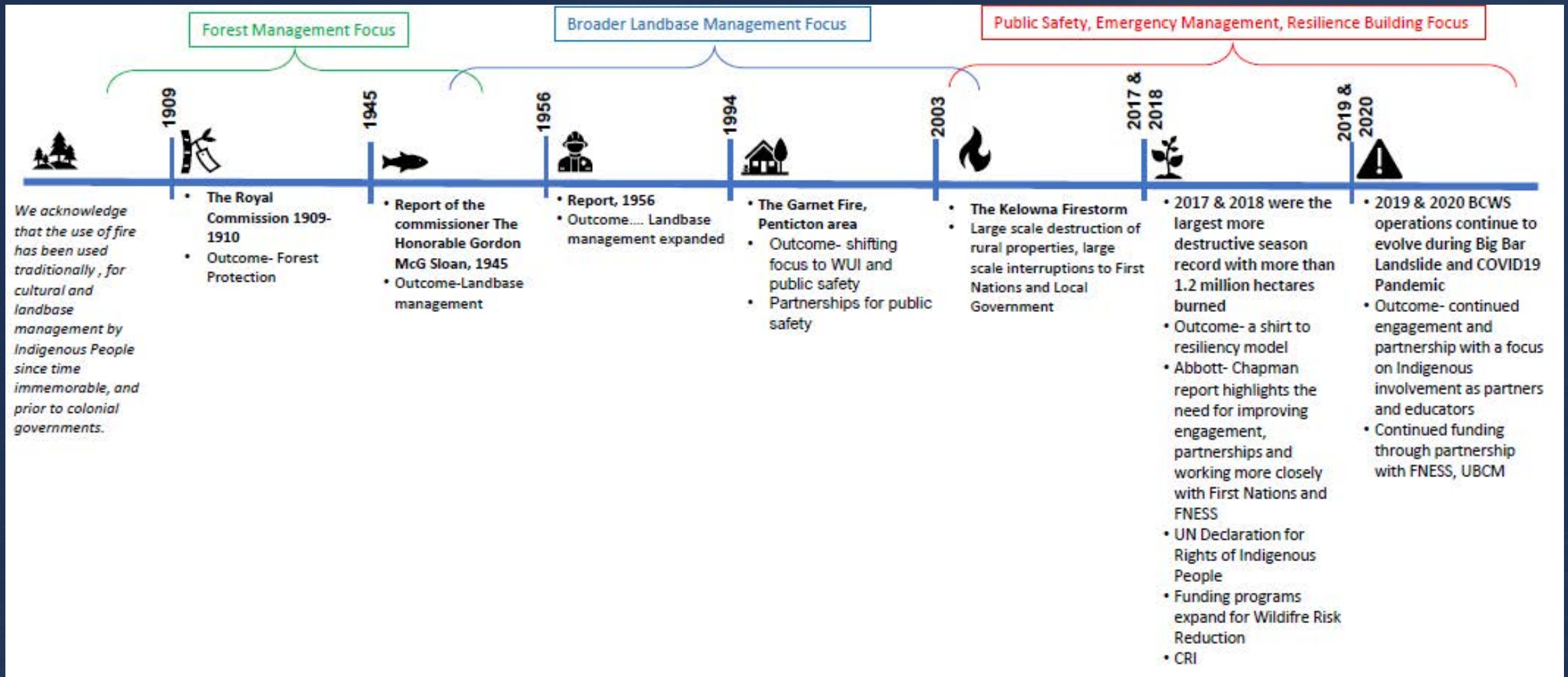
BC COMMUNITY FOREST ASSOCIATION AGM WILDFIRE RESILIENCY



BC Wildfire
Service

October 21st, 2021

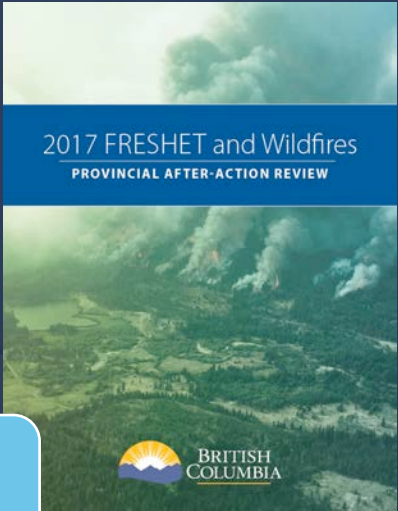
Recent Wildfire History





Abbott /
Chapman Report

Government's
Action Plan:
Responding to
wildfire and flood
risks

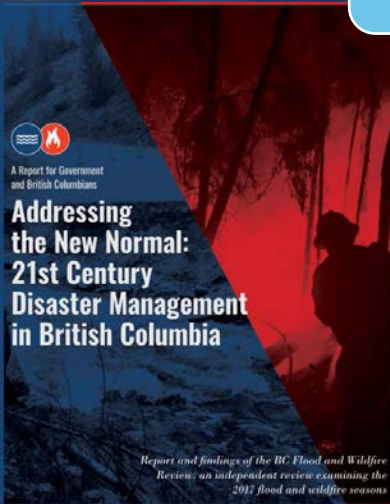


Fire Seasons
reviews

Internal and
external after
action reviews



Current
State



Policy/Legislative
changes (FRPA,
EPA)

Intentions
paper, CAS,
DRIPA



Community Resiliency Investment Program



It's about working together

Partnerships

Commitment

Inclusiveness

Integration

Collaboration



COMMUNITY RESILIENCY INVESTMENT PROGRAM STREAMS

The primary goal of the Community Resiliency Investment (CRI) program is to reduce wildfire risks and wildfire impacts in B.C. communities. Indigenous and non-indigenous governments can use CRI grants to undertake wildfire risk reduction and fire prevention activities, including those on public, reserve and private land.

The Community Resiliency Investment program has two main funding streams:

1. Funding for the **FireSmart Community Funding and Supports** category is available for First Nations, municipalities and regional districts to help mitigate wildfire threats in their communities.
2. Funding for the **Crown Land Wildfire Risk Reduction (WRR)** category is administered and implemented by the B.C. government to mitigate wildfire threats in higher-risk areas around communities and critical infrastructure.
3. Economic Recovery – one time funding which supports the BCCFA_BCWS Current Partnership

CROWN LAND WILDFIRE RISK REDUCTION

Highlights of the program include:

The Crown Land WRR funding category is intended to reduce wildfire risk on Crown land around communities and high value infrastructure. Key activities include:

1. Fuel management planning and treatment activities focusing on provincial Crown land located around communities.
2. Prescribed fire (including planning and operational treatments) and the development of a comprehensive provincial prescribed fire program.
3. Risk reduction activities targeting provincially identified critical infrastructure, beginning with critical response infrastructure such as government-owned radio repeaters, weather stations and airtanker bases.

APPLYING RISK MITIGATION

Goals for risk mitigation include managing hazardous vegetation fuels on the landscape, creating fire-resilient ecosystems and contributing to the creation of fire-adapted communities:

➤ From a human life and safety perspective:

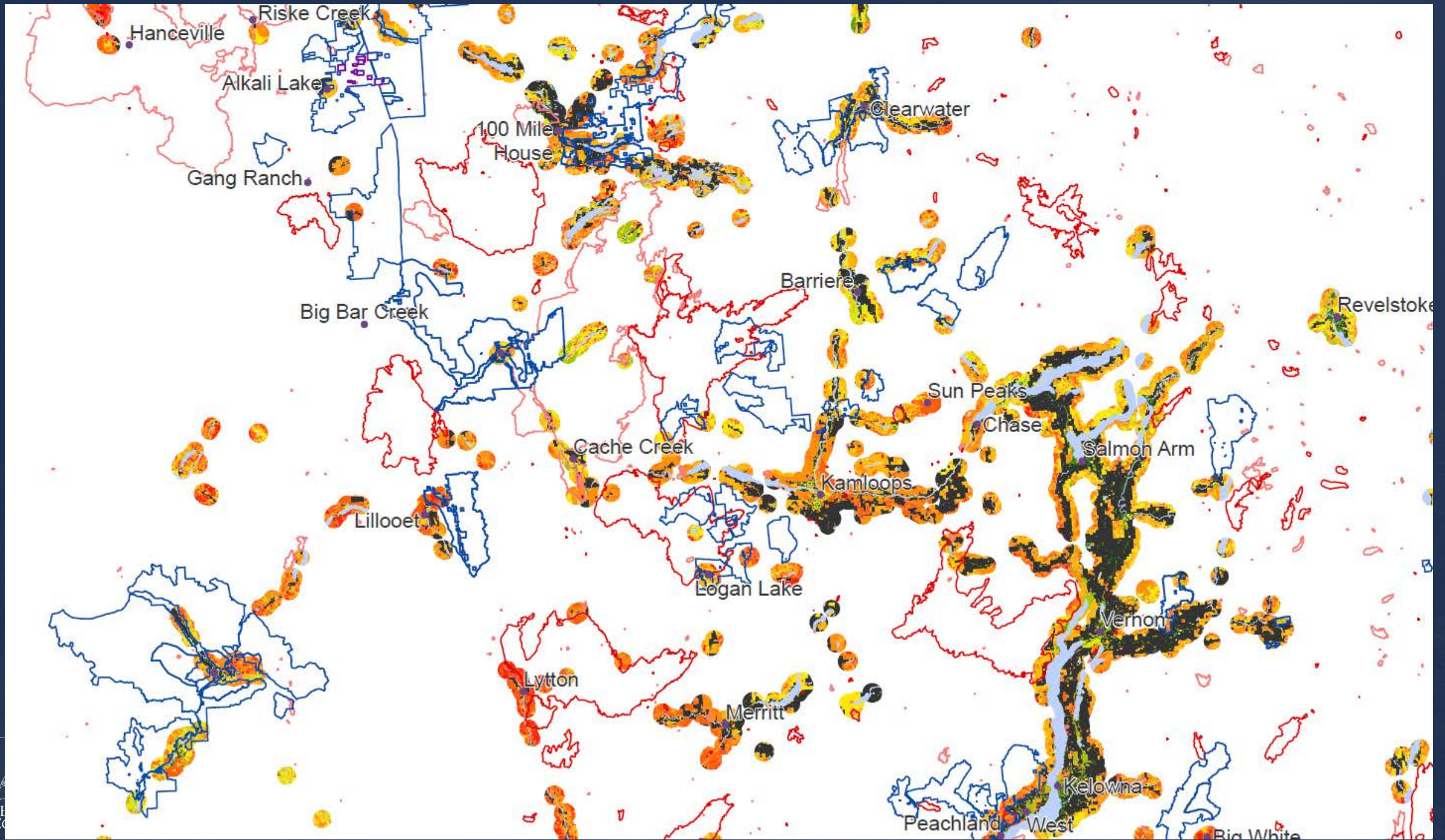
Reduce fire behaviour so that it is **safer and easier for firefighters to suppress wildfires** and help mitigate negative impacts in the wildland urban interface (WUI).

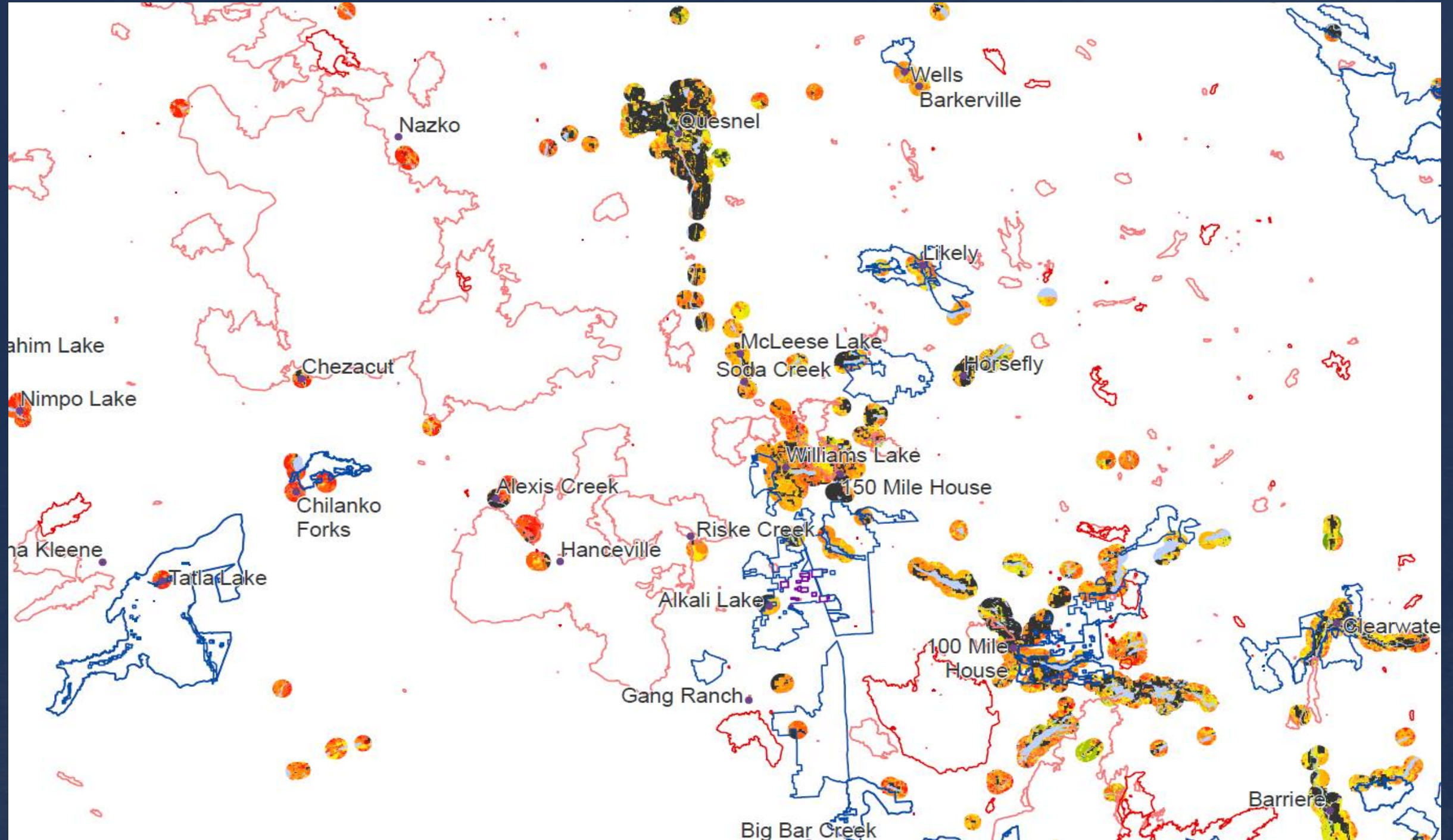
Focus on creating **FireSmart** communities and infrastructure located in the WUI, to reduce the likelihood of structures igniting and to minimize catastrophic impacts of wildfire events.

➤ From a resiliency perspective:

Reducing fire severity so that it is more likely that areas of forest will survive, soil damage will be limited and post-fire restoration activities will be minimized.

Restoring the natural cycle of fire-maintained grassland and dry forest ecosystems.





COMMUNITY FIRESMART RESILIENCY COMMITTEE

The purpose of the committee is to bring together local communities and provincial agency staff (EMBC, FLNRORD) with stakeholders to coordinate, plan and share information on FireSmart activities at a scalable level.

The CFRC supports engagement with partners together under a common vision connected to the seven Firesmart disciplines.

Members may include fire departments, Indigenous and/or local government staff and elected officials, **Community Forest Agreement holders**, local provincial government Emergency Management BC and BCWS, Land Managers (e.g NR Districts) industry representatives and other community stakeholders.

CFRC provides a key level of collaboration and organization:

Scalable to local government needs as BC has variable wildfire threat, local capacity, spatial arrangement of communities

Eligible activity under CRI – Interagency Co-ordination

PROMOTION OF PARTNERSHIPS AND COLLABORATION

1. Collaborate on a communication and public education strategy with multiple local governments and First Nation communities.
2. Develop/update, implement and monitor the success of your community wildfire resiliency plan.
3. **Develop a fuel management planning table in collaboration with FLNRORD and other agency staff.**
4. Streamline Firesmart home assessment and FireSmart grant programs by sharing capacity between multiple local authorities.
5. Neighbourhood Recognition Program and work towards increasing the number of recognized neighbourhoods and communities in the region each year.
6. Coordinate applications to the Community Resiliency Investment program and other funding opportunities.



THANK YOU.

Questions?



BC Wildfire
Service