

Forestry Education

Community Engagement

Ecology

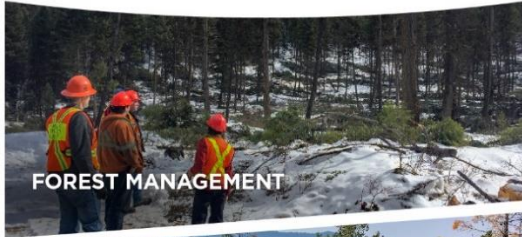
Forest Management

Future Foresters

Healthy Forests



WEST BOUNDARY COMMUNITY FOREST



FOREST MANAGEMENT



COMMUNITY REVENUE



RECREATION & EDUCATION



SUPPORTING LOCAL MILLS

IN PARTNERSHIP WITH:

The Village of Midway
and City of Greenwood

WEST BOUNDARY COMMUNITY FOREST



LOCAL EMPLOYMENT



SUSTAINABLE HARVESTING



FIRST NATIONS PARTNERSHIP



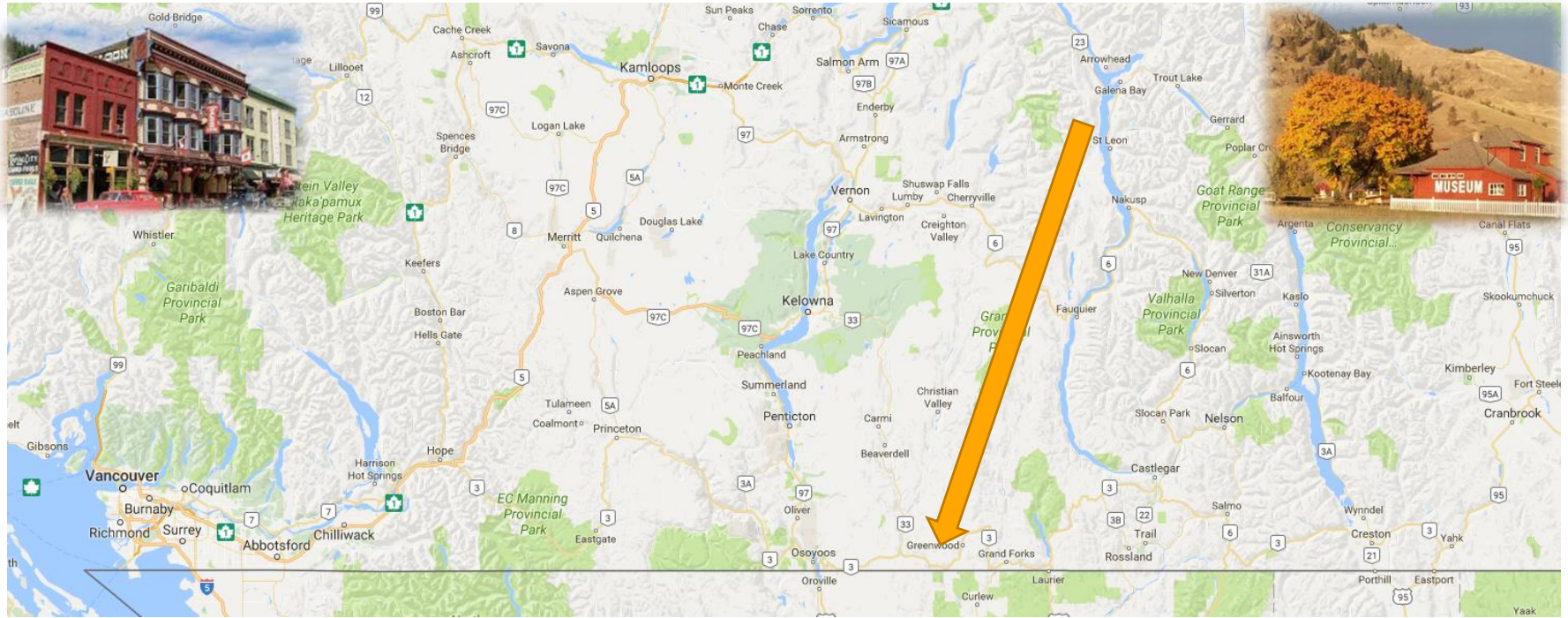
COMMUNITY ENGAGEMENT

IN PARTNERSHIP WITH:

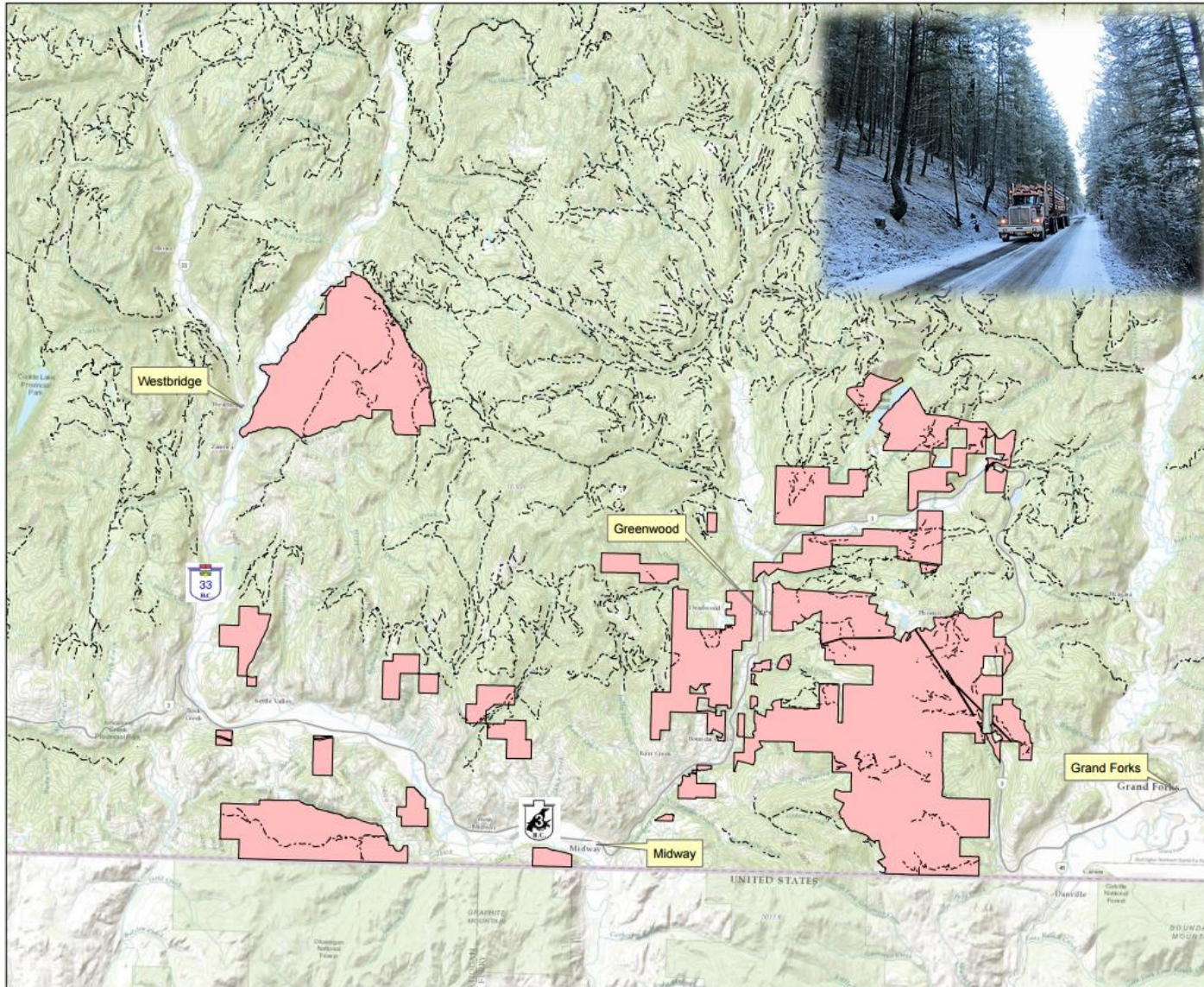
The Village of Midway
and City of Greenwood



Where is Midway and Greenwood?



WBCF



West Boundary Community Forest Overview Location Map

Legend

- West Boundary CF Parcels
- Roads



0 2.5 5 Kilometers

1:150,000



Coordinate System: WGS 1984 UTM Zone 11N
 Projection: Transverse Mercator
 Datum: WGS 1984
 False Easting: 500,000.0000
 False Northing: 0.0000
 Central Meridian: -117.0000
 Scale Factor: 0.9996
 Latitude Of Origin: 0.0000
 Units: Meter

Author: E. Beavan

Management Objectives:

- **Timber harvesting** (*generate revenue for the communities*)
- **Local employment** (*use local contractors*)
- **First Nations collaboration** (*included at all phases*)
- **Local public decision-making** (*field trips, meetings, website*)
- **Fuel Mitigation & Forest Health** (*protect our communities and forest*)
- **Recreational Opportunities** (*promote outdoor recreation*)
- **Forestry Education for our children and the public** (*today's talk!*)



Getting into the Schools



Career Days
Career Opportunities
in Forestry,
sawmilling, and
logging.

Forestry "Show
and Tell" Days



Learning About Sawmilling at Vaagen



Tree Planting

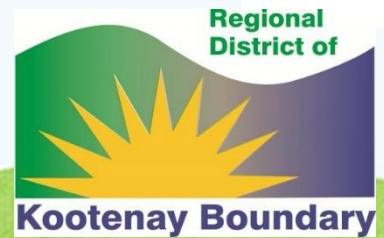
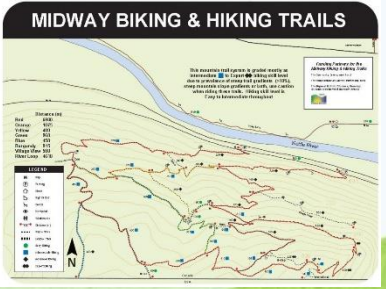
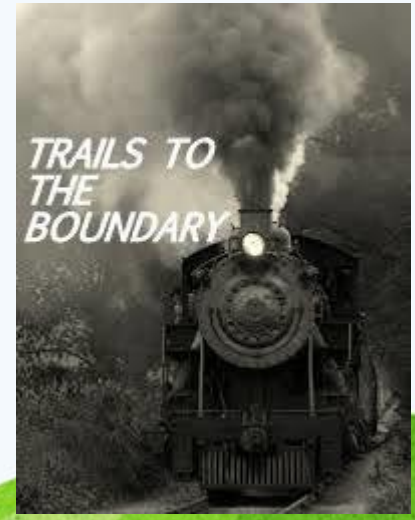
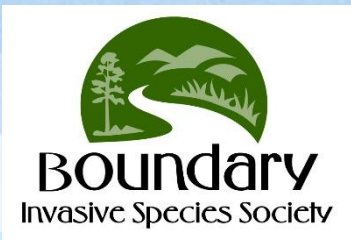


Educating our Communities



Forestry Days, Community Fairs & Tradeshows







**Wilgress Lake
Outdoor Education Centre**

LOCATION

Our 60-acre property is located on the south shores of Wilgress Lake (an 11-minute drive from Greenwood and 22 minutes from Midway). It can be accessed by car or school bus using BC Mines rd.



- **Accessible via school bus.**
- **Close to communities.**
- **Forested land and aquatic ecosystems.**
- **Surrounded by Crown Land.**



Cleaned up property
Installed a new dock and picnic shelter
Developed hiking trails
Interpretive signage



Connecting with Teachers and Classrooms



Host outdoor planning days with teachers (PD Day activity)

Teachers connect with our co-ordinator who books the date, arranges the day's agenda, organizes number of kids and arrival times....

Collaborate with Osoyoos Indian Band and Metis individuals, outdoor ed teachers, local BCTS foresters, and WBCF board members.



FOREST & AQUATIC ECOLOGY

- Examine the components of forest ecosystems and investigate the interactions found within our Boundary forest environment
- Examine the mechanisms and attributes of a riparian ecosystem and how forestry works with our water systems focusing on Wilgress Lake
- Discover how the terrestrial and aquatic ecosystems interact with each other
- Assess the impact of environmental components and changes on a forest ecosystem
- Analyze the structure and growth of trees as well as the medium (soil) that supports them



FOREST WOODLAND OPERATIONS

- Examine the use of various mapping methods in forestry operations
- Apply measurement practices to collect data related to forests including the skills of timber cruising, cut block layout, and collection of field data – skills required to be a professional forester.
- Assess the post-harvest practices of a managed forest including spacing, pruning and planting.



FORESTRY PRODUCTS

- Examine the economic benefits derived from forest products (including non-timber products) and investigate how a variety of forest products are made and the milling process
- Investigate technology and research related to forest products development.



SUSTAINABLE FORESTRY OPPORTUNITIES AND CHALLENGES

- Investigate career information and job opportunities in the forestry sector
- Analyze current local and regional issues in forest management
- Analyze safety practices related to the forest industry
- Outline the challenges impacting the health and sustainability of forest resources in the Boundary



FOREST RESOURCES, FIRST NATIONS AND RURAL COMMUNITIES

- Learn about current forest management practices and innovative approaches used in the field
- Understand the importance of forest resources to our First Nations and local communities
- Learn about the distribution of different types of forests found in Boundary region
- Enjoy outdoor education activities forests and lake including hiking, biking, canoeing, paddle boarding, disc golf, beach volleyball, leadership games, and other field activities





Fuel Mitigation on Surrounding Crown Land



Forestry Licence to Cut Permit
Protected our investment

Ensured the surrounding forest stands
were treated with the same vision as the
Community Forest

Skid trails provide access into the stand so
kids can see the work



WILGRESS LAKE WILDFIRE RISK REDUCTION

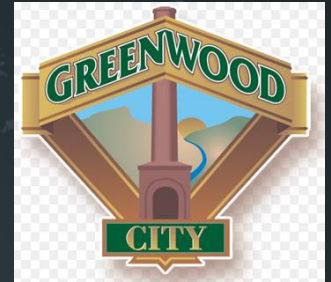
Primary Objectives:

- Decrease surface, ladder, and crown fuels;
- Improve fire resistance of stand;
- Improve operability and safety for fire suppression crews

Strategies:

- Seed tree and single tree selection harvesting
- Increase canopy base height; understory slashing
- Utilize non-merchantable fibre





Thank You

www.westboundarycommunityforest.com