

N51705 Trozzo Creek Fire – Our Story



BCCFA AGM 2021



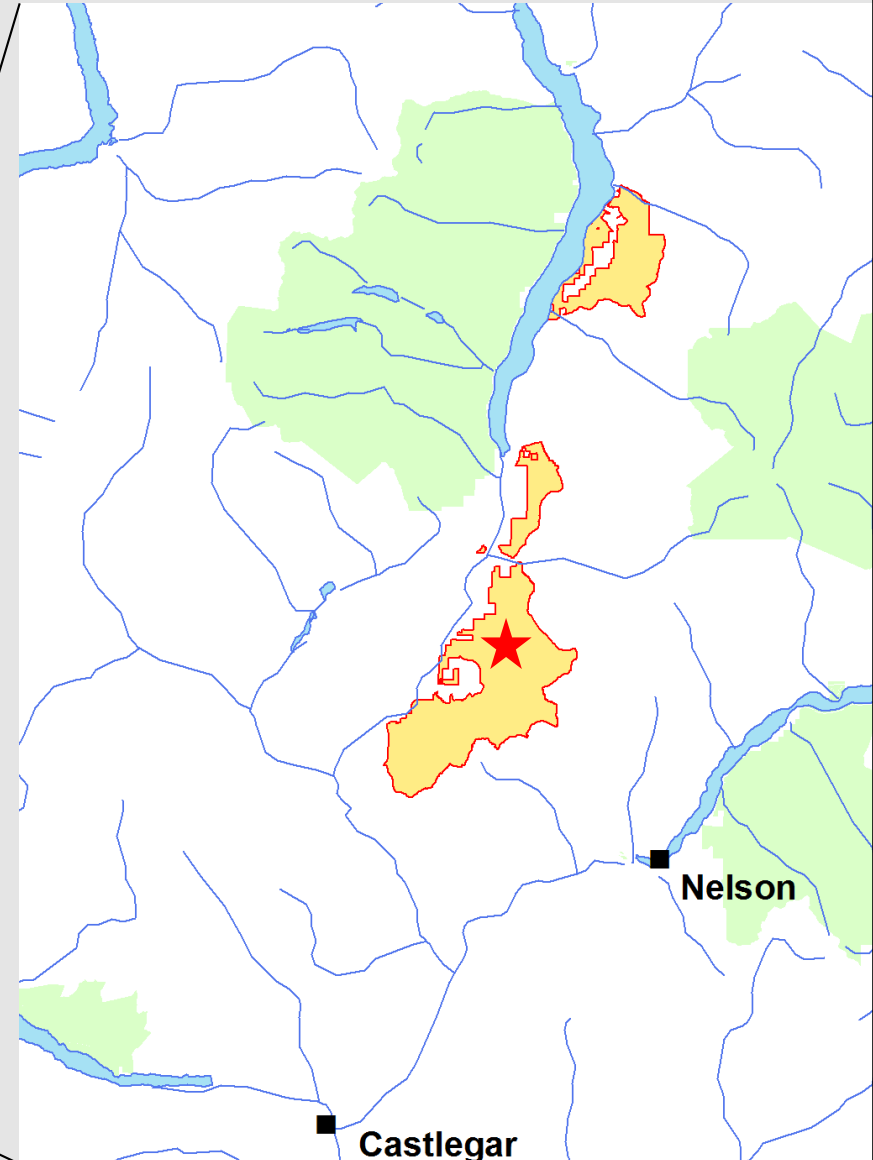
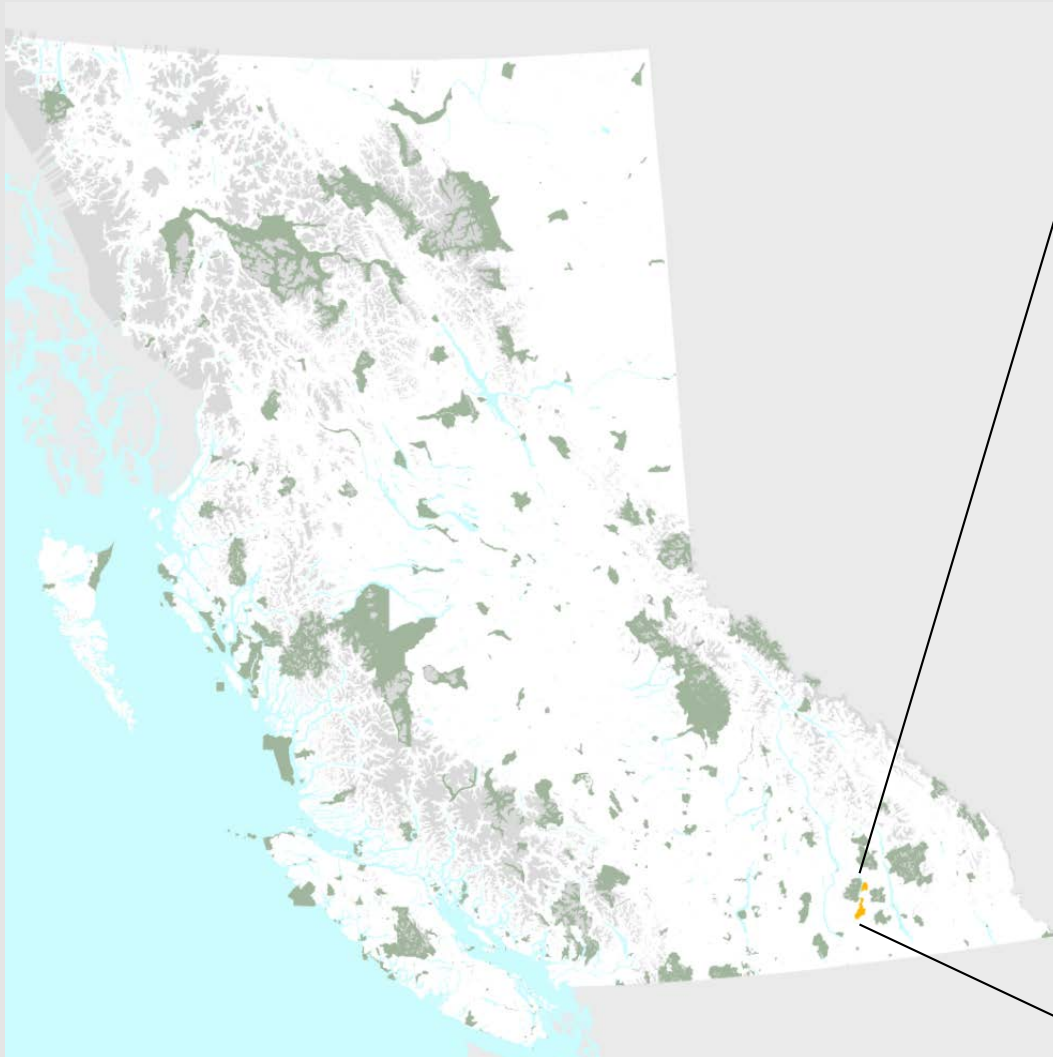
SIFCo

SIFCo acknowledges with respect the indigenous peoples within whose traditional lands we are meeting today.



History

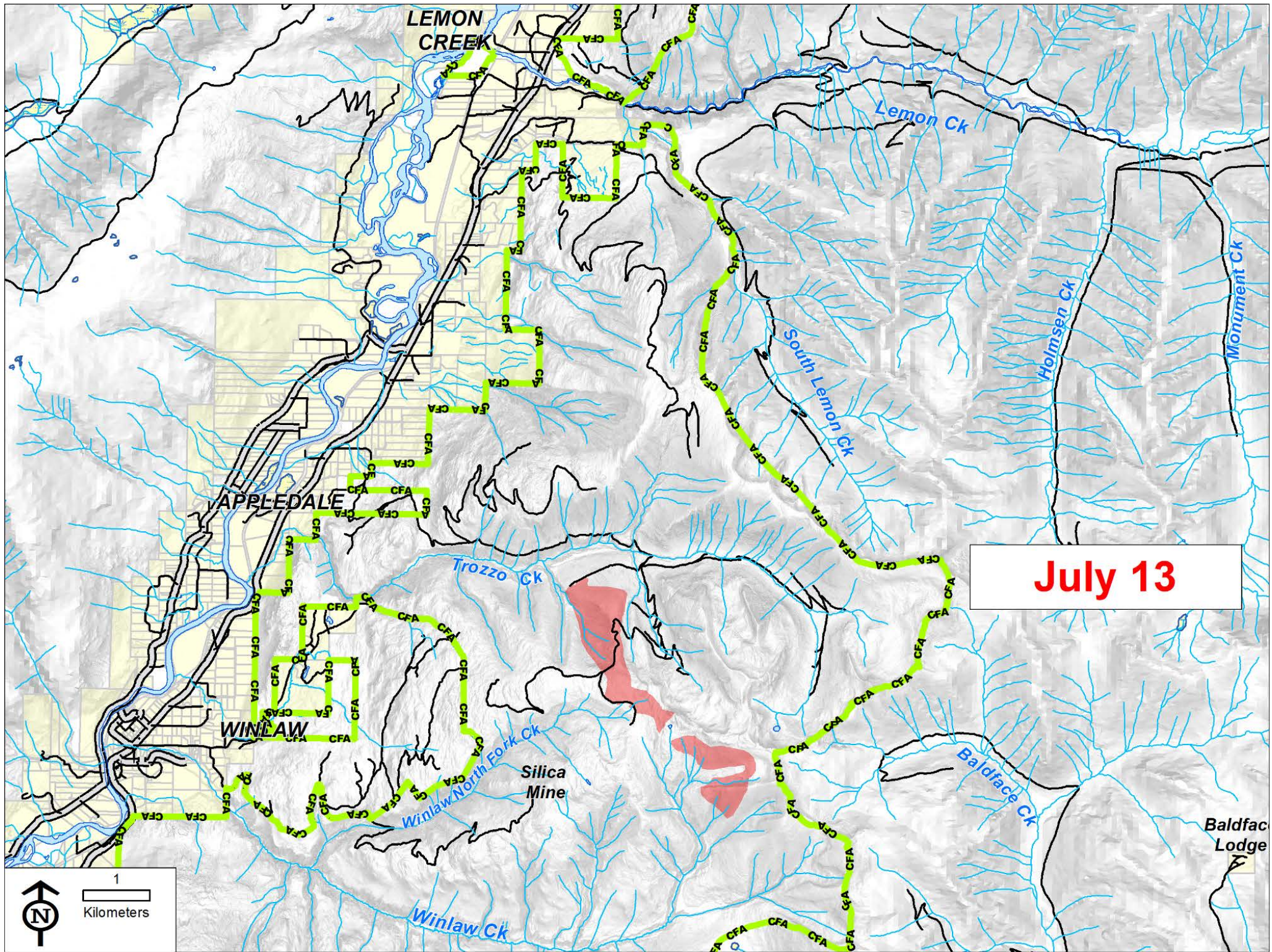
- Discovered July 9, 2021 in Trozzo Creek

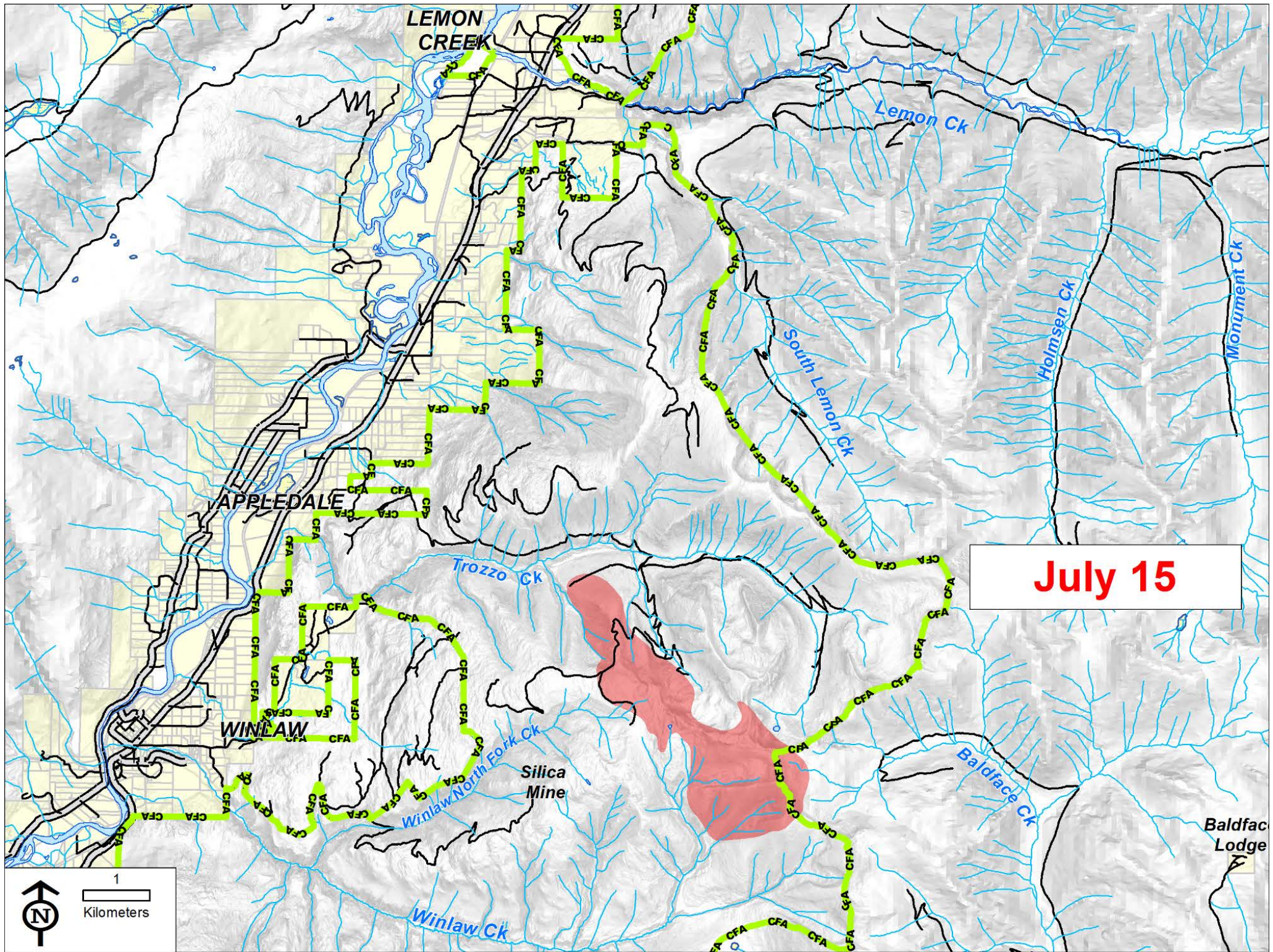


History

- Going pretty well by July 11



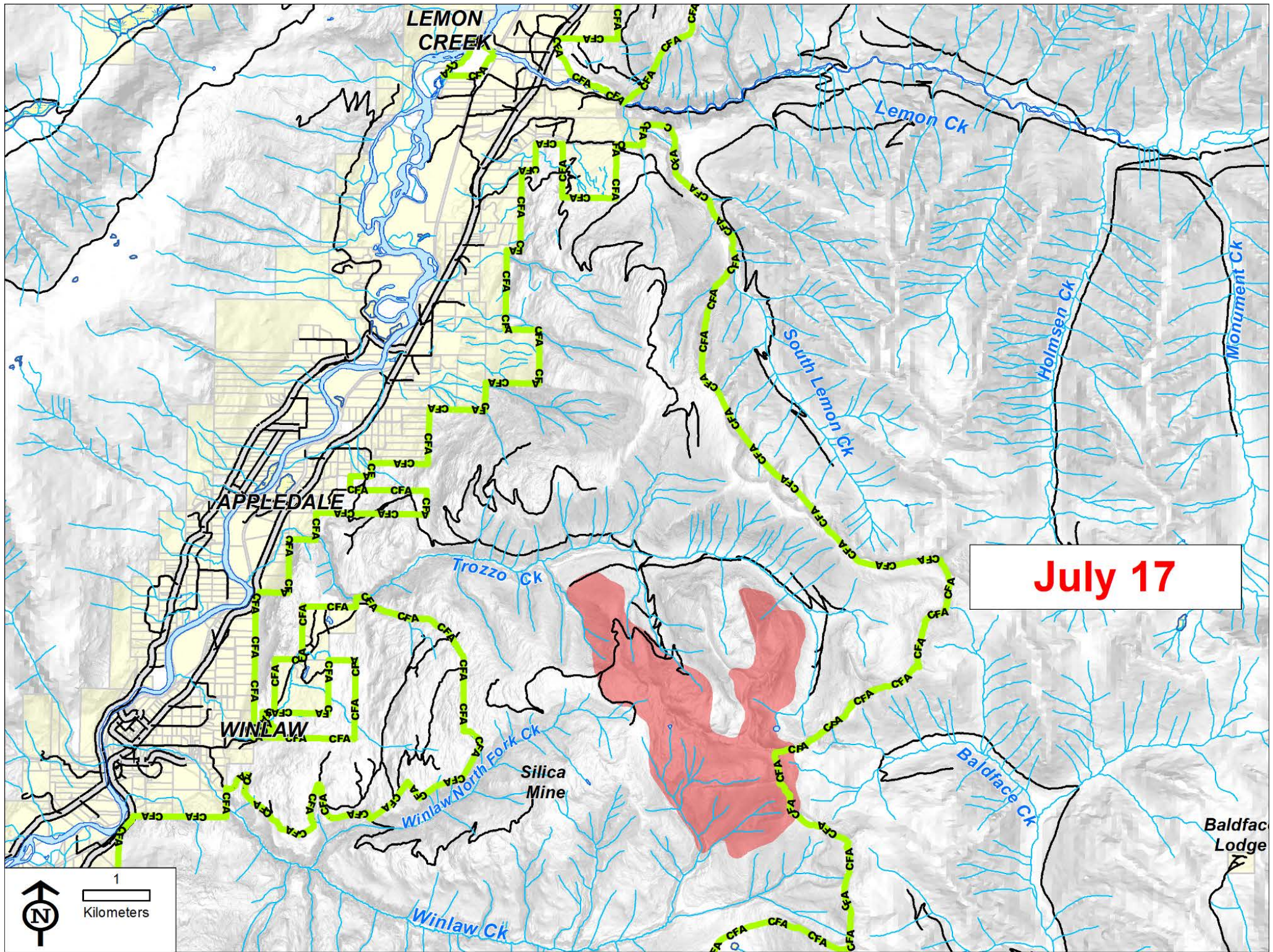


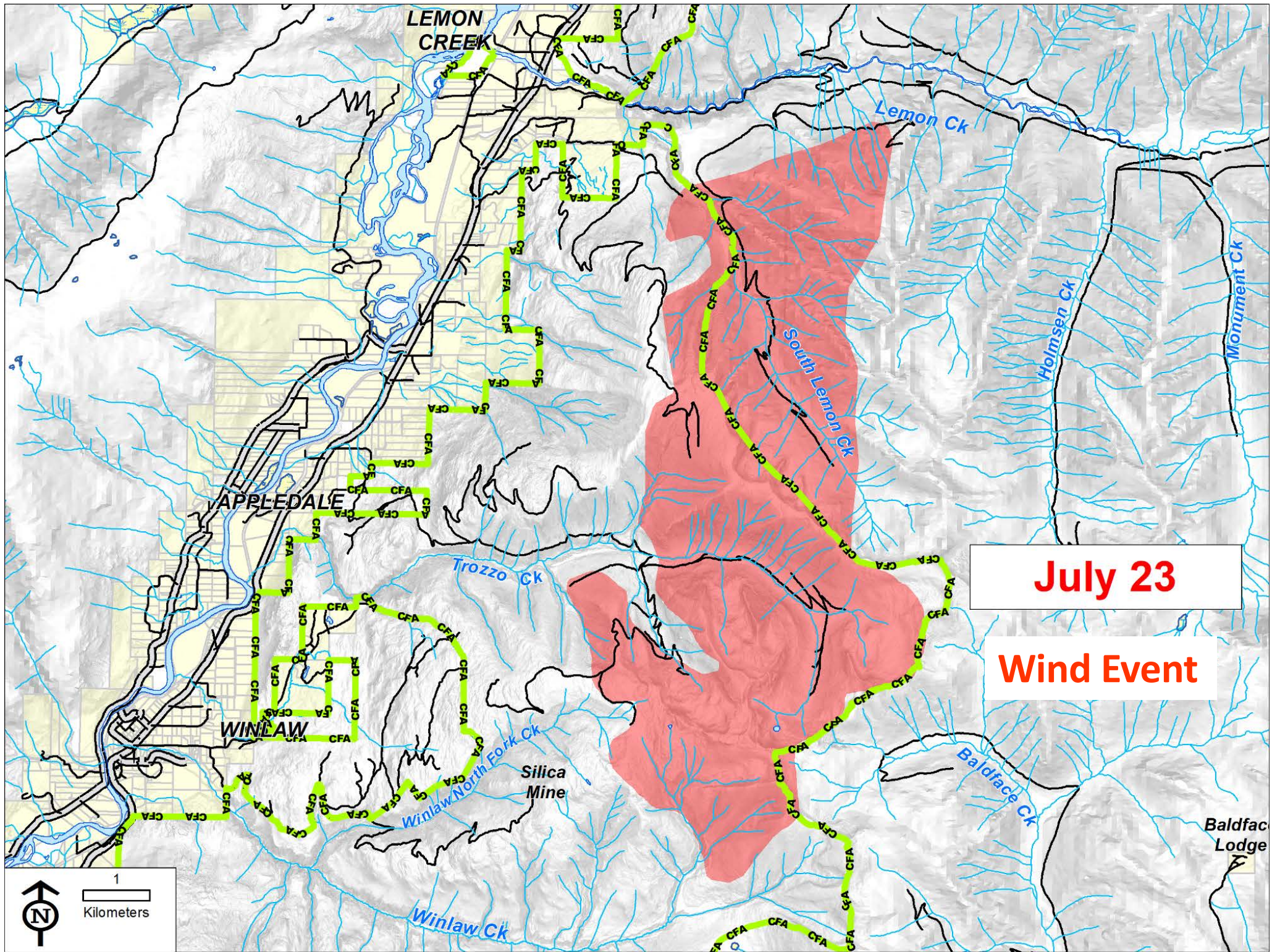


July 15



1
Kilometers





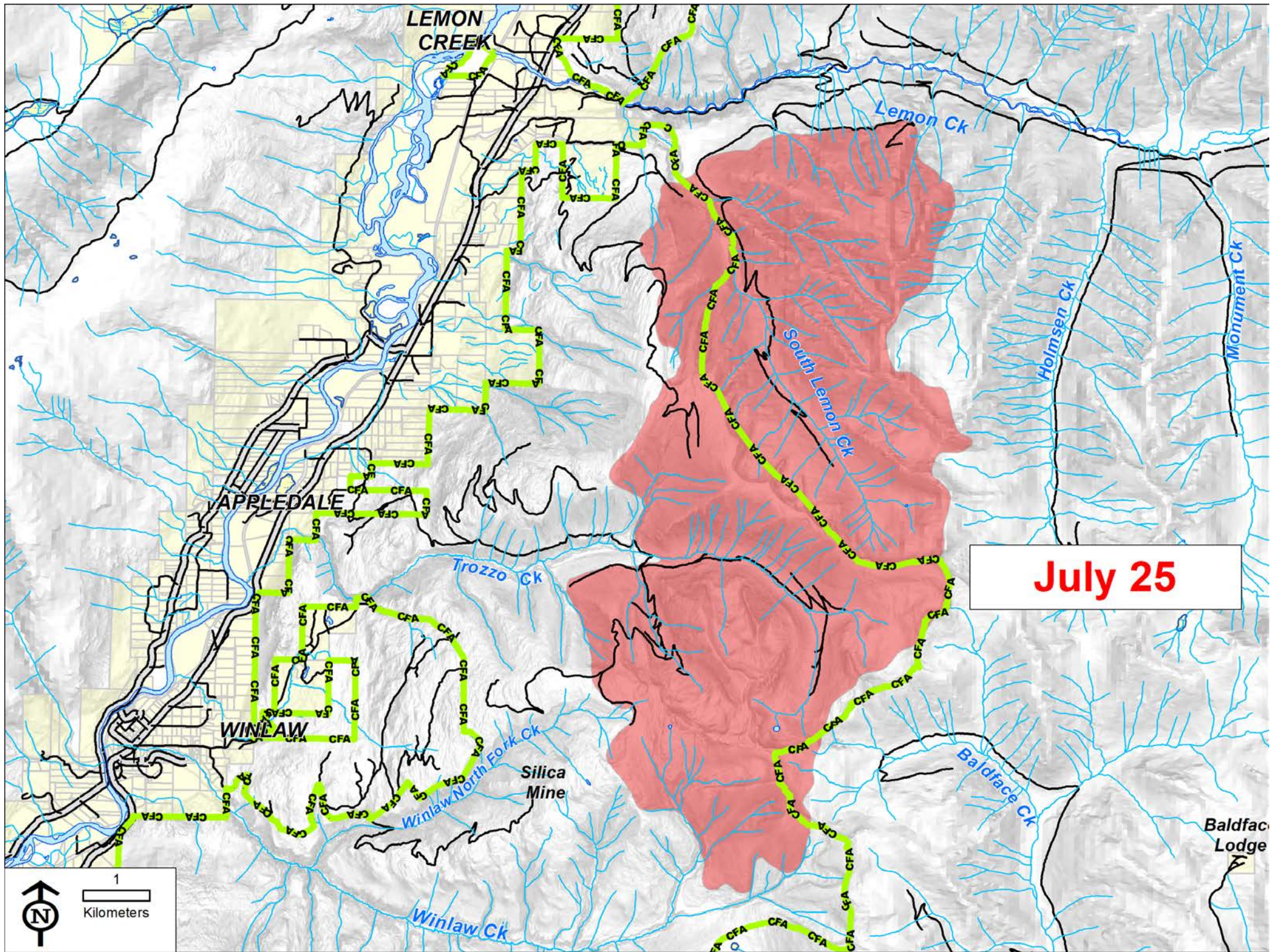
July 23

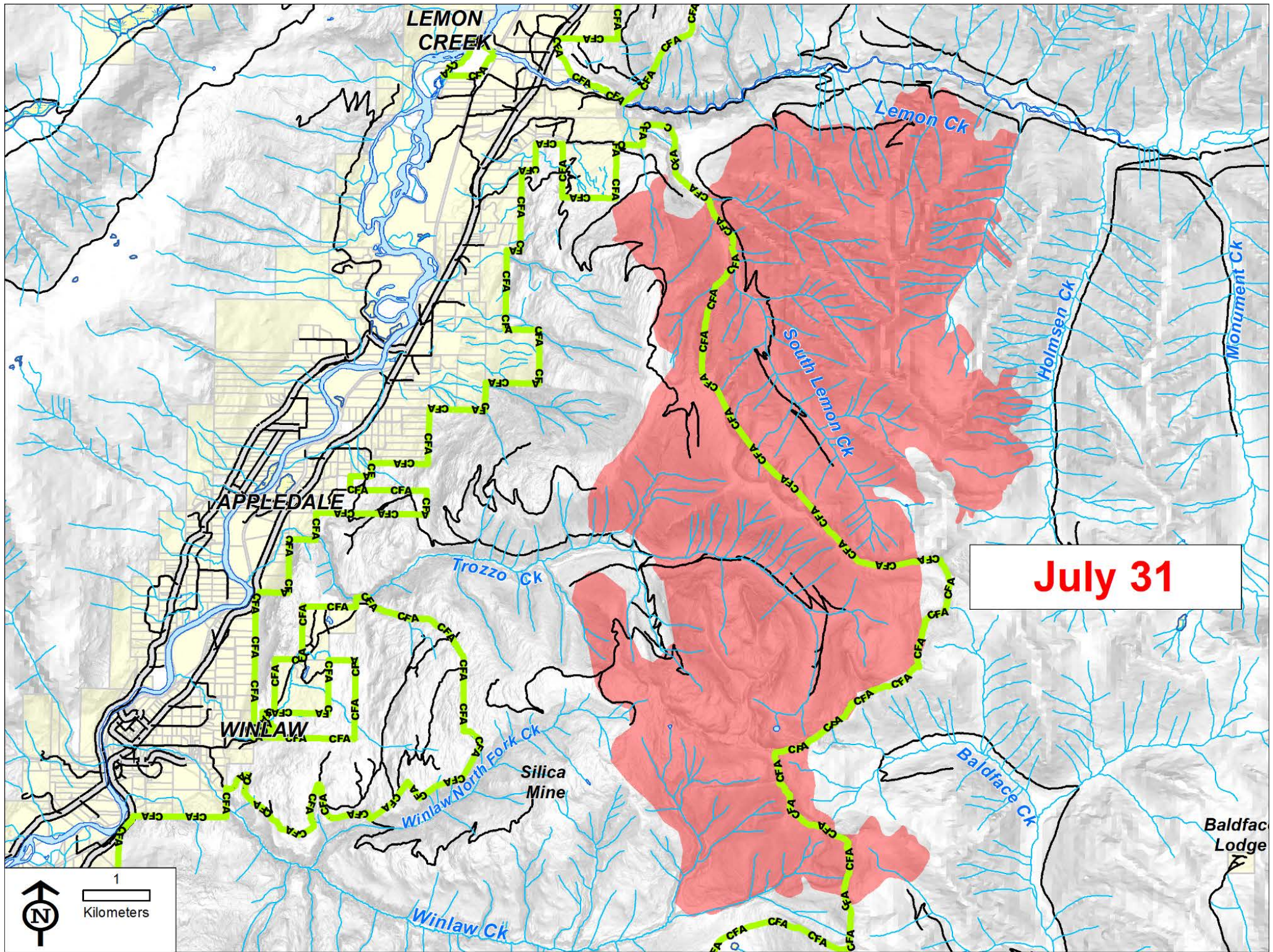
Wind Event

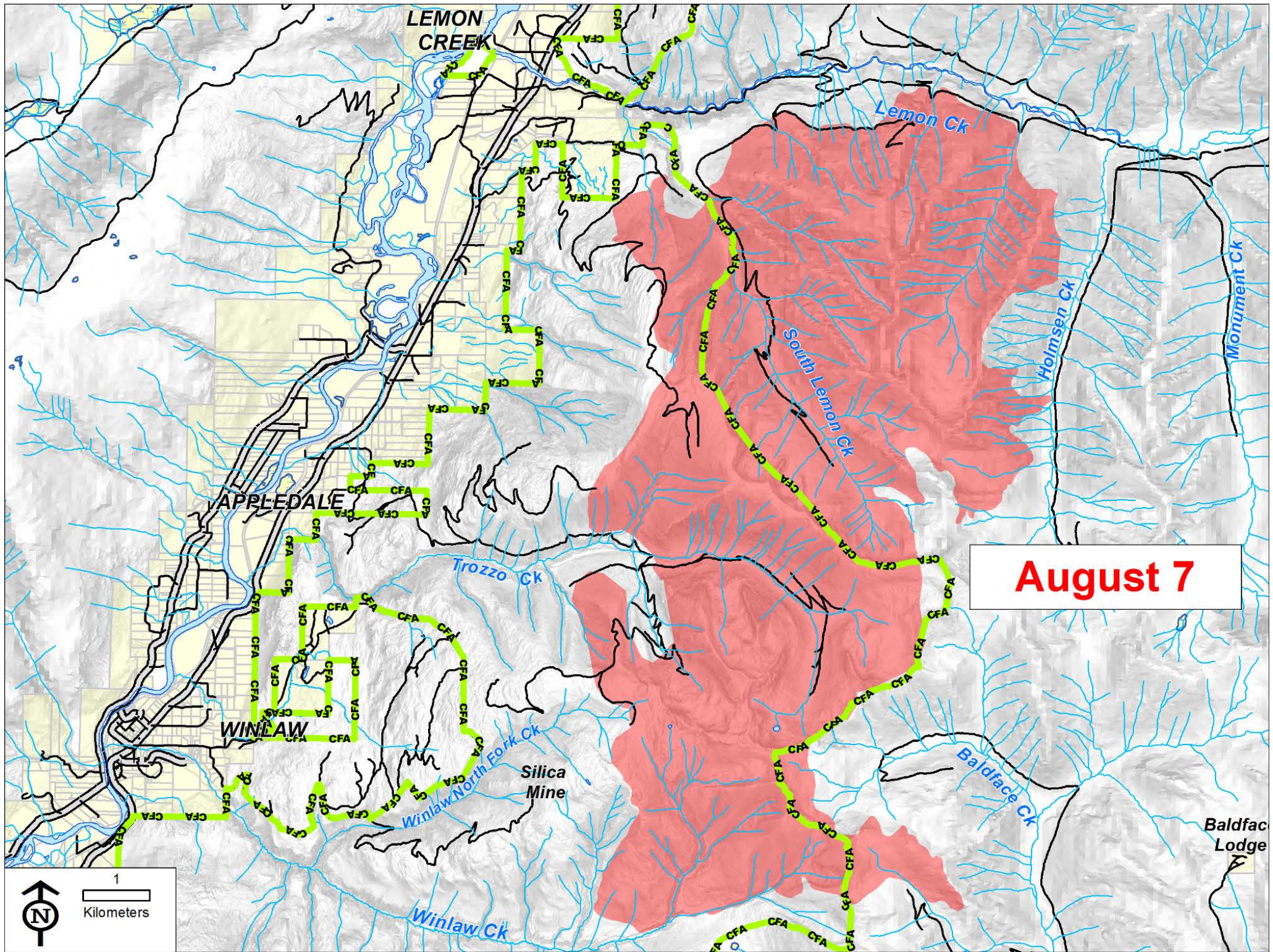
An aerial photograph of a mountain valley. The terrain is rugged with dense evergreen forests covering the slopes. A prominent blue diagonal banner is overlaid on the left side of the image. The banner contains the text 'FLYKLA.C' in bold, black, sans-serif capital letters. The background shows a deep valley with a river or stream winding through it, surrounded by steep, forested hillsides. The lighting suggests a clear day with some shadows cast across the landscape.

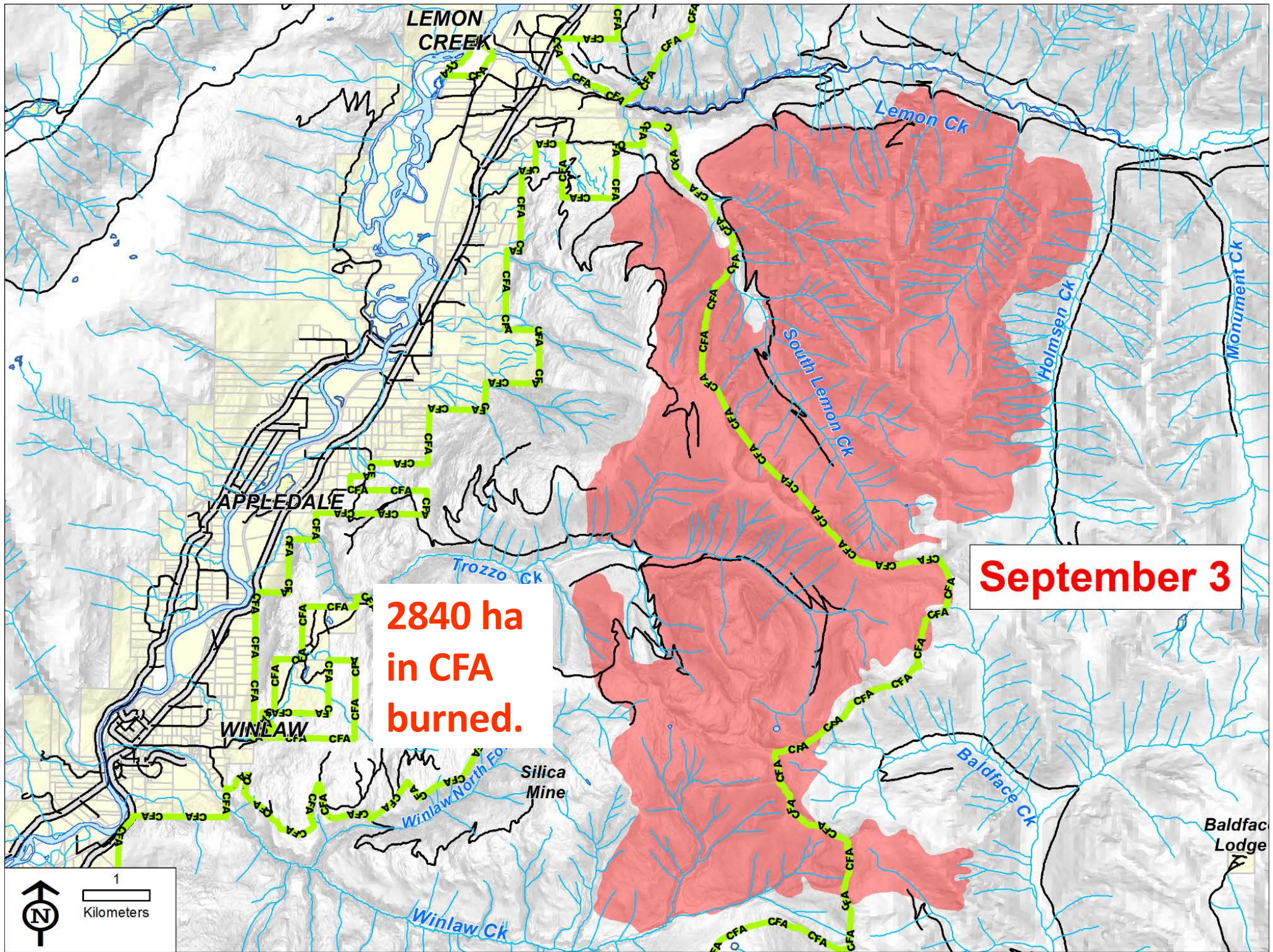
FLYKLA.C

FACE OF SOUTH LEMON DRAINAGE



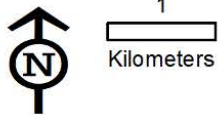






**2840 ha
in CFA
burned.**

September 3



A lot of high elevation fire inside CFA

– open forests, beetle kill



A lot of high elevation fire inside CFA

– non-forested ridge crests



**Trozzo Creek – large domestic use watershed in CFA -
Lots of forest impacts.**

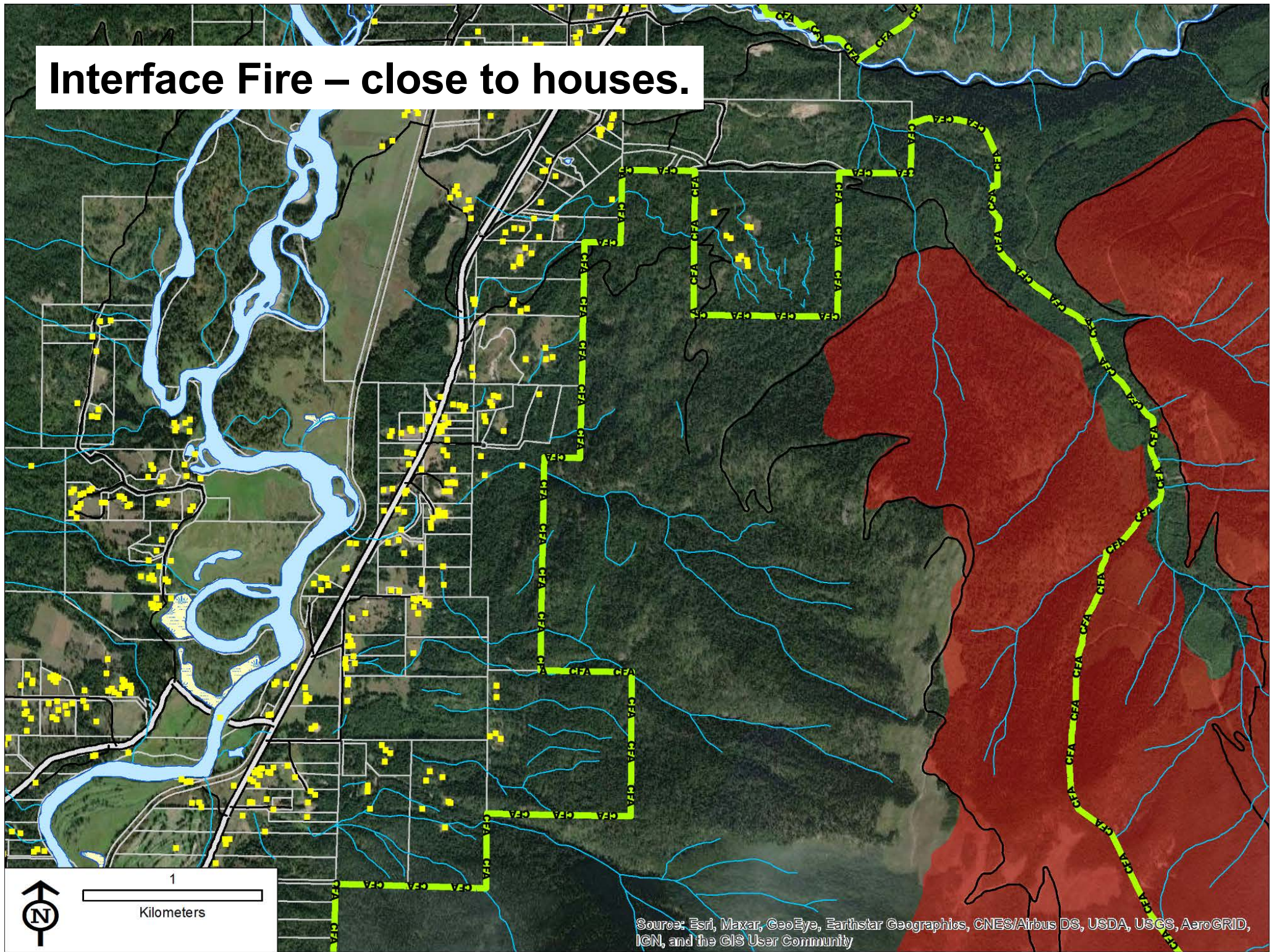


**Trozzo Creek – large domestic use watershed in CFA -
Lots of forest impacts.**



**Black water. Brown water. Everyone wonders what
freshet will be like. ECA?**

Interface Fire – close to houses.



Source: Esri, Maxar, GeoEye, Earthstar Geographics, CNES/Airbus DS, USDA, USGS, AeroGRID, IGN, and the GIS User Community

So, what was this like?

- 1) All tenure related forestry work stopped. For months.
No layout, surveys, planning, NADA.**

So, what was this like?

- 1) All tenure related forestry work stopped. For months. No layout, surveys, planning, NADA.
- 2) **BCWS Area Exclusion – had to ask for permission to go in the woods. Was forthcoming, but day by day. Not practical for “real work”.**

So, what was this like?

- 1) All tenure related forestry work stopped. For months. No layout, surveys, planning, NADA.
- 2) BCWS Area Exclusion – had to ask for permission to go in the woods. Was forthcoming, but day by day. Not practical for “real work”.
- 3) Logging contractor stopped work, walked machines up the FSR, and went to work on fire on Day 3. Got back Oct 11.**

So, what was this like?

- 1) All tenure related forestry work stopped. For months. No layout, surveys, planning, NADA.
- 2) BCWS Area Exclusion – had to ask for permission to go in the woods. Was forthcoming, but day by day. Not practical for “real work”.
- 3) Logging contractor stopped work, walked machines up the FSR, and went to work on fire on Day 3. Got back Oct 11.
- 4) We (3 person SIFCo staff) worked on the fire.**

We (3 person staff) worked on the fire...

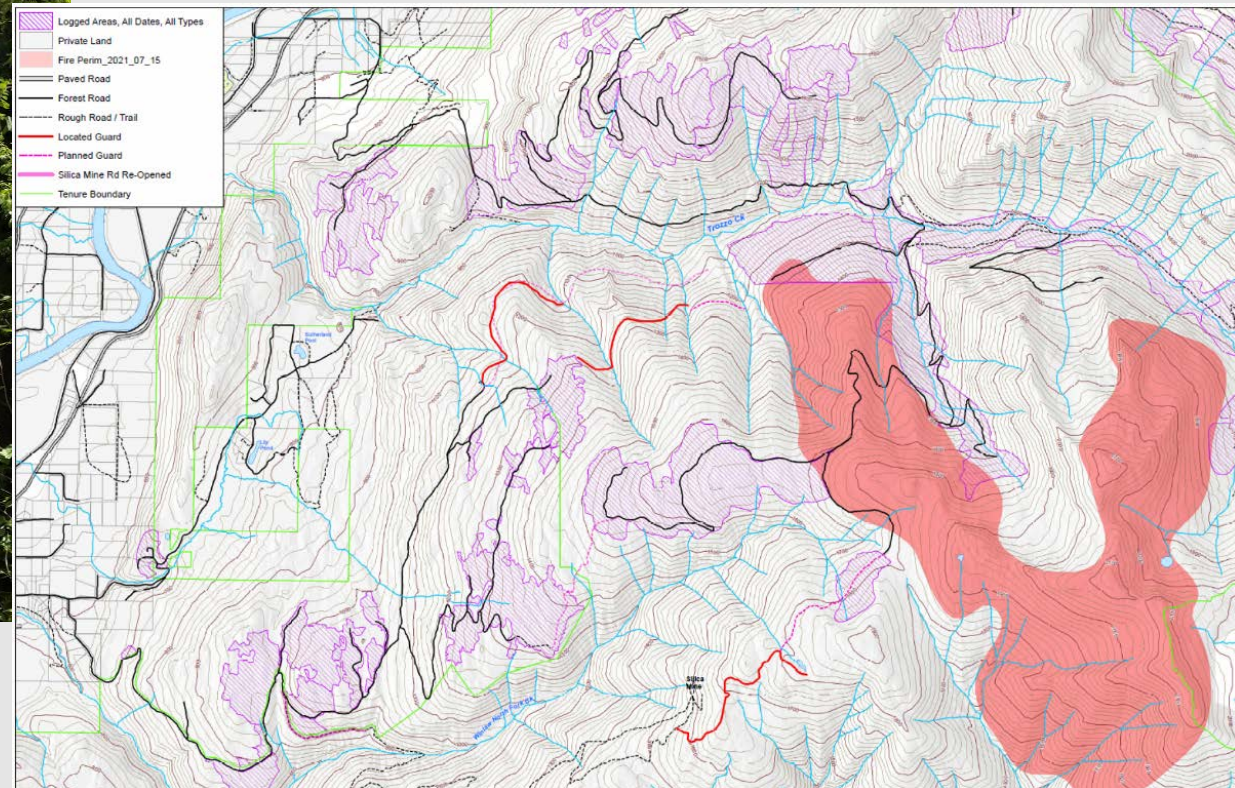
Stephan Martineau – Manager

- Interface with BCWS**
- Strategic planning with IC.**
- (Also one of the evacuees.)**

We (3 person staff) worked on the fire...

Tom Bradley – Forestry Supervisor

- Spent time as machine crew supervisor.
- Mapping for IC at start of incident (night shift).
- Planning and mapping support for fire guard location.
- 12 to 14 hour days



We (3 person staff) worked on the fire...

Jesper Nielsen – Layout and Planning Forester

- Fire Guard planning and field location.**
- (12 to 14 hour days, ridiculous heat, dry slopes, endless horizontal pine, things on fire. Just a party.)**



We (3 person staff) worked on the fire...

Jesper and Tom

- Fire Guard planning and field location.**

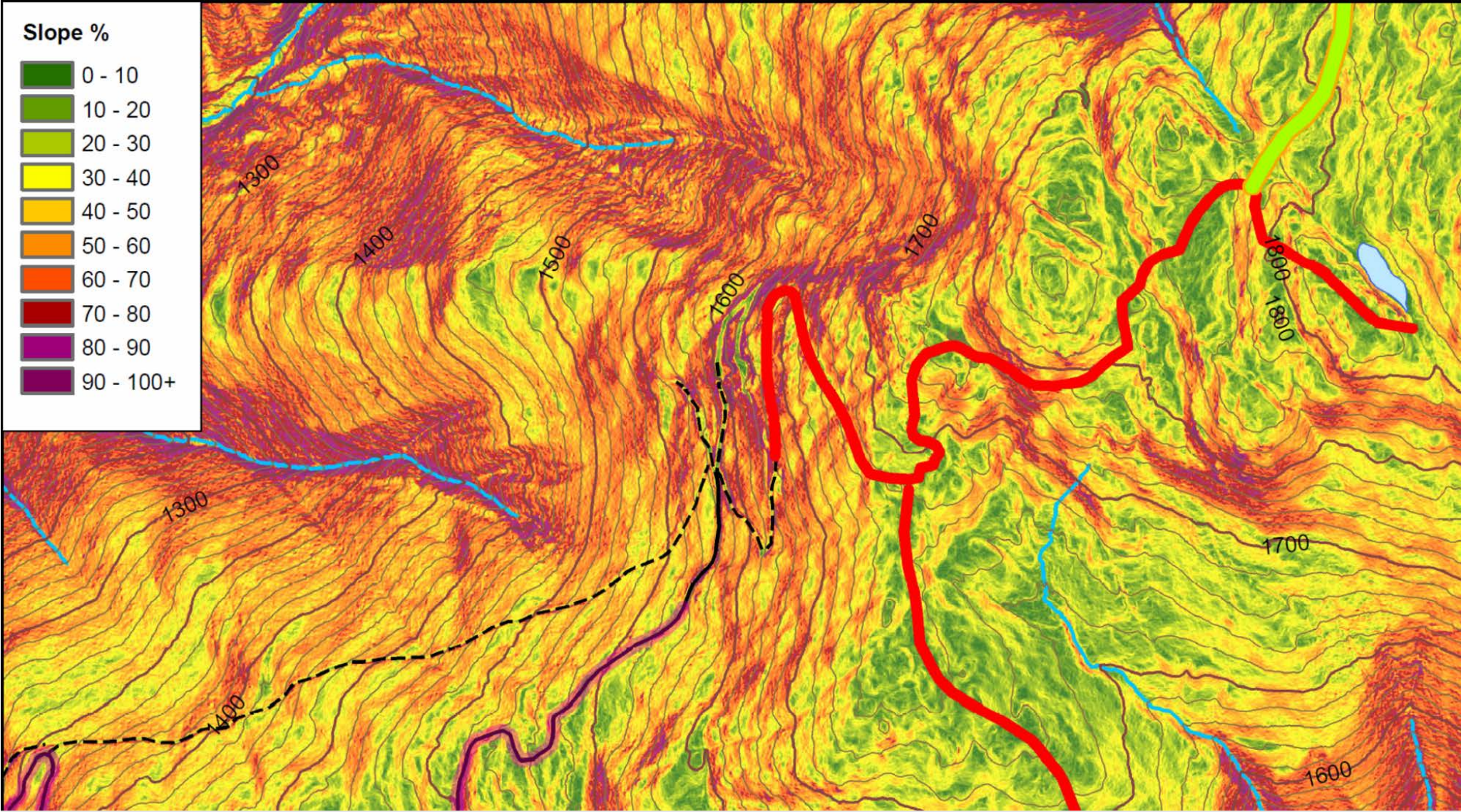
Meaning?

Tom and Jesper sat in front of the screen many mornings with LiDAR data, Google Earth, 40 years of experience on landbase.

- Whereabouts does BCWS want a guard?**
- Where can we possibly make one?**
- Jesper goes forth with LiDAR slope map in his iPad and Today's Plan, locates guard.**
- Next Day: Repeat.**

Special thanks to Kalesnikoff Lumber and BCTS for sharing their LiDAR data for areas outside CFA with us.

Typical Morning Plan



It Mattered



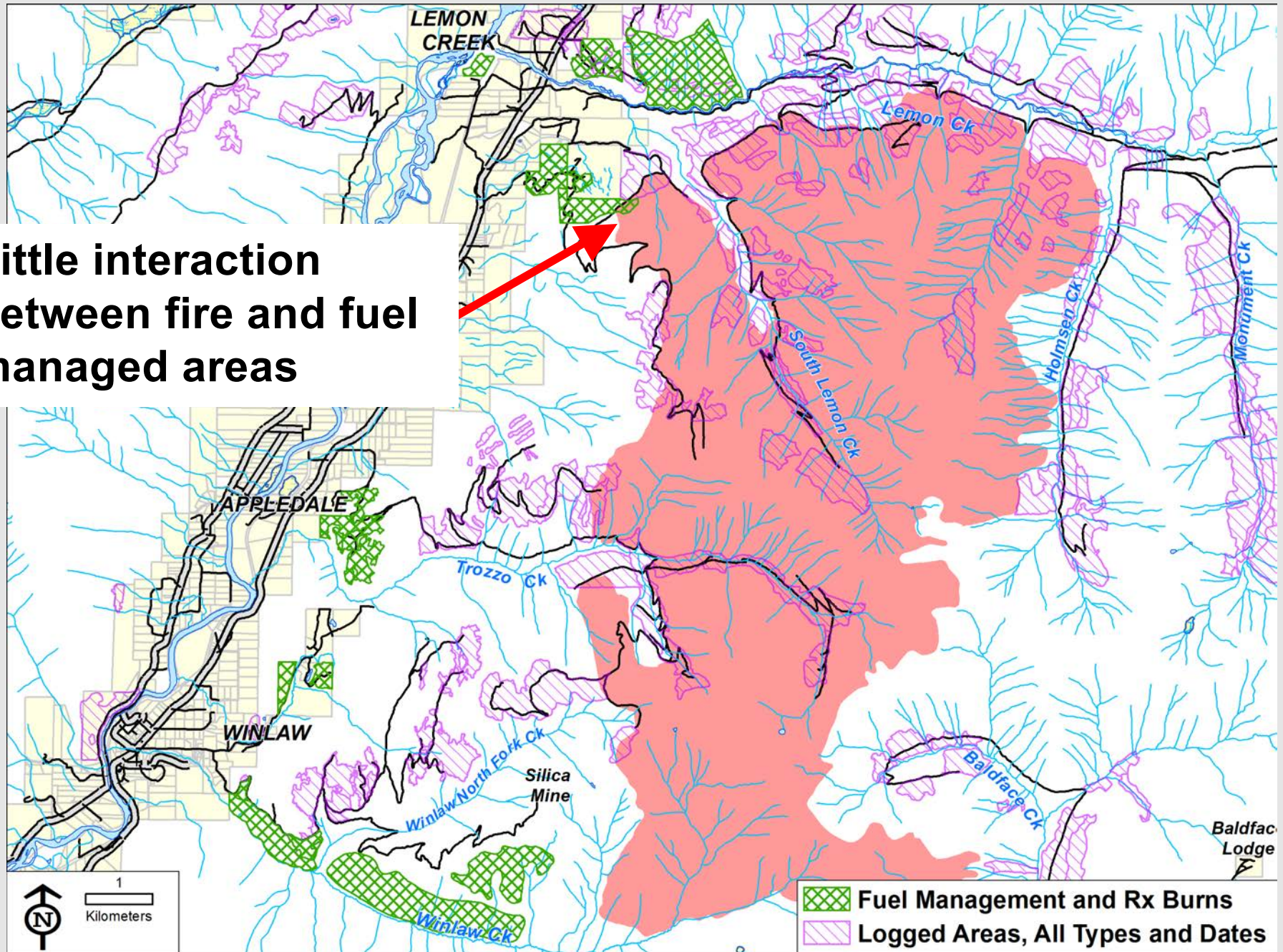
So, what was this like?

- 1) All tenure related forestry work stopped. For months. No layout, surveys, planning, NADA.
- 2) BCWS Area Exclusion – had to ask for permission to go in the woods. Was forthcoming, but day by day. Not practical for “real work”.
- 3) Logging contractor stopped work, walked machines up the FSR, and went to work on fire on Day 3. Got back Oct 11.
- 4) We (3 person SIFCo staff) worked on the fire.
- 5) **Fire was subdued by expertise, air power, hard work and rain by Aug 10. Next day: Guard Salvage! Normal forestry work postponed again. For 6 weeks.**



Fire vs Fuel Management?

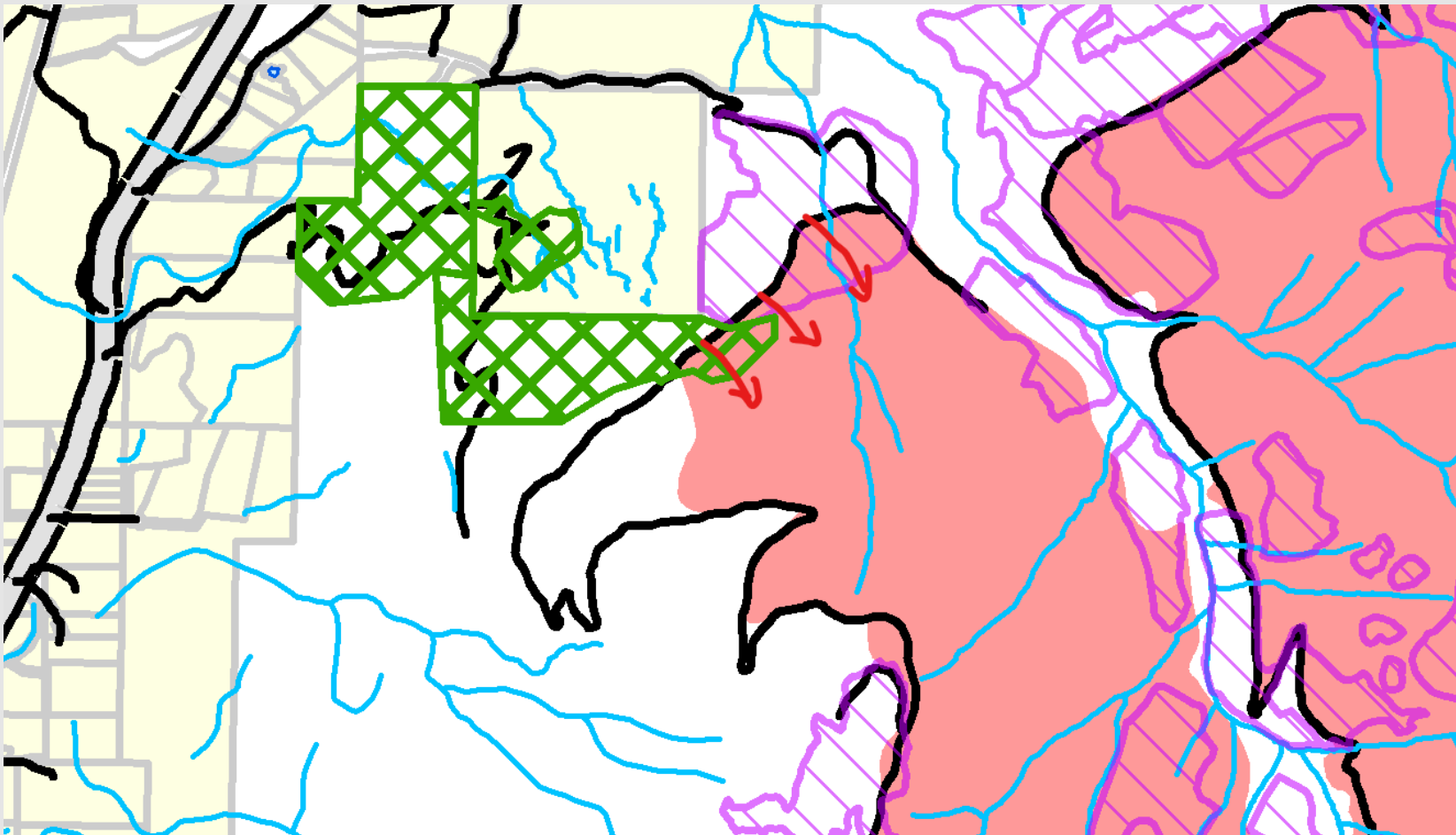
Little interaction
between fire and fuel
managed areas



Fire vs Fuel Management?

Comments from BCWS:

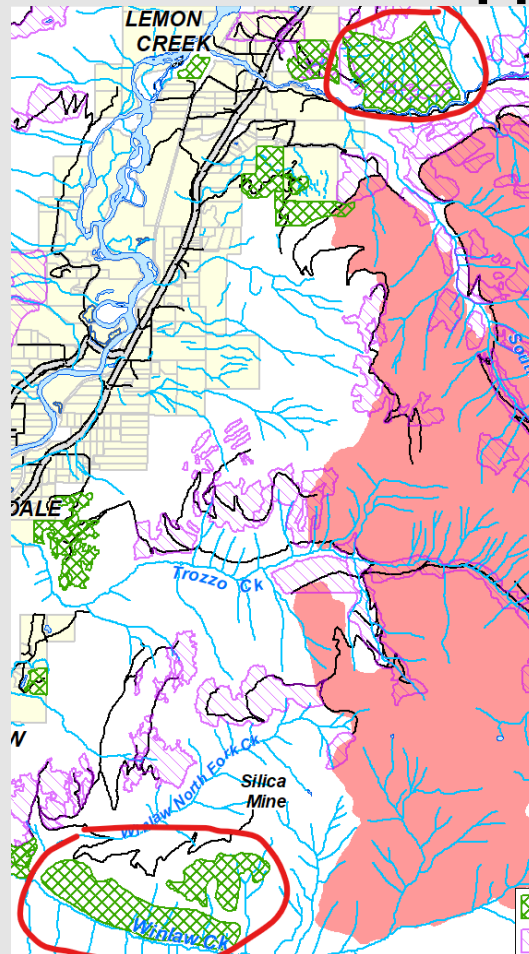
- 1) Fuel managed area provided anchor for a key backburn to save houses/values.



Fire vs Fuel Management?

Comments from BCWS:

- 1) Fuel managed area provided anchor for a key backburn to save houses/values.
- 2) Presence of Rx burn polys was useful strategically:
Flank guards of effective suppression areas if needed.



Fire vs Fuel Management?

Comments from BCWS on site:

- 1) Fuel managed area provided anchor for a key backburn to save houses/values.
- 2) Presence of Rx burn polys was useful strategically: Flank guards of effective suppression areas if needed.

Happy that the operational testing of our fuel managed areas was limited given the fire conditions at the time!

What worked?

- 1) **BCWS IC and Suppression Crews: Nothing but thanks and praise from us.**

What worked?

- 1) BCWS IC and Suppression Crews: Nothing but thanks and praise from us.
- 2) **Existing positive relationship built up between SIFCo and BCWS over multiple Rx burns was an asset. Teamwork / Not our first date....**

What worked?

- 1) BCWS IC and Suppression Crews: Nothing but thanks and praise from us.
- 2) Existing positive relationship built up between SIFCo and BCWS over multiple Rx burns was an asset. Teamwork / Not our first date....
- 3) **SIFCo took role as community information provider. Were not creating info, were publishing web guide to access info. Positive feedback from community.**

What worked? Good Fortune.

1) No second wind event. For weeks.

What worked? Good Fortune.

1) No second wind event. For weeks.

2) No second nearby ignition. Ever.

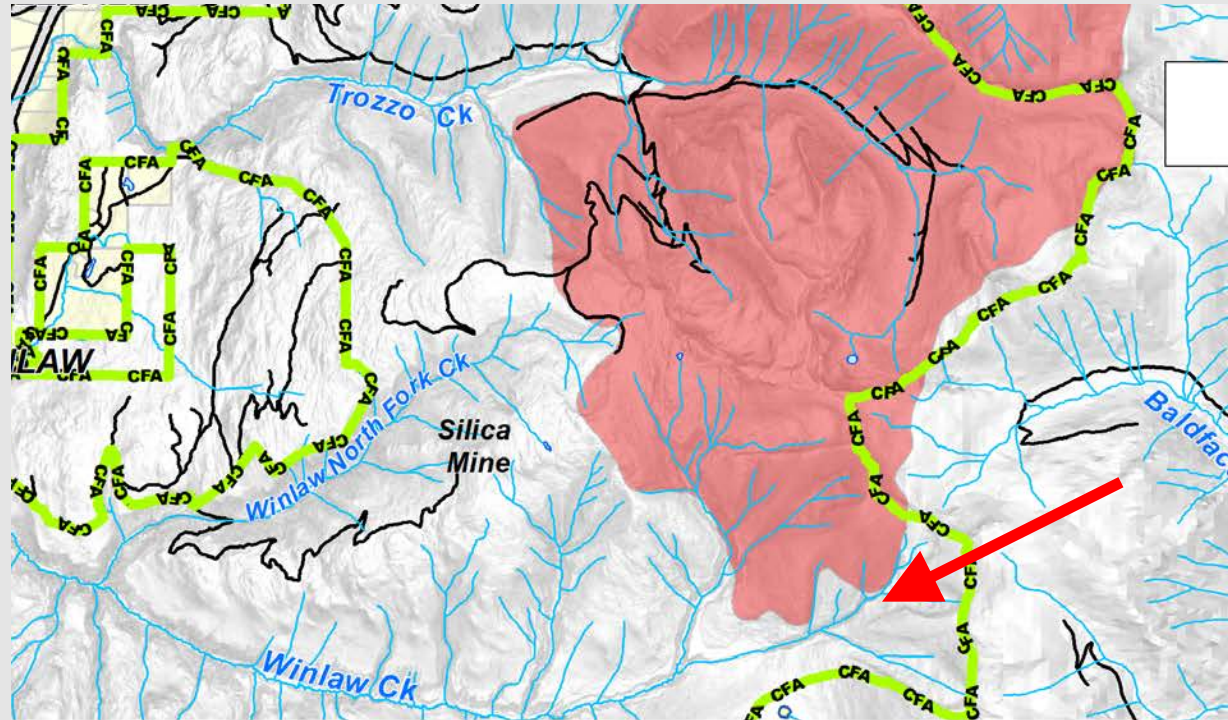
What worked? Good Fortune.

- 1) No second wind event. For weeks.
- 2) No second nearby ignition. Ever.
- 3) **Suppression success when there *had to be* suppression success.**



What worked? Good Fortune.

- 1) No second wind event. For weeks.
- 2) No second nearby ignition. Ever.
- 3) Suppression success when there *had to be* suppression success.
- 4) Fire sat in bottom of Winlaw Ck for weeks. And did *nothing*.



What did not work?

- 1) RDCK Evacuation Zone. Command center was above RDCK exclusion line. RDCK Security stopped map delivery to IC, stopped scheduled meetings between CFA Manager and IC.**

What did not work?

1) RDCK Evacuation Zone. Command center was above RDCK exclusion line. RDCK Security stopped map delivery to IC, stopped scheduled meetings between CFA Manager and IC.

2) Fire Guard Salvage: Good way to loose money in our terrain / timber types.

What did not work?

1) RDCK Evacuation Zone. Command center was above RDCK exclusion line. RDCK Security stopped map delivery to IC, stopped scheduled meetings between CFA Manager and IC.

2) Fire Guard Salvage: Good way to loose money in our terrain / timber types.

3) Post-Fire Rehab:

- **Suppression work “opened up” a lot of old non-status roads.**
- **Post fire rehab has rendered those roads impassible – HUGE x-ditches.**
- **Unusual broad community consensus (of outrage and complaint).**

What did not work?

- 1) RDCK Evacuation Zone. Command center was above RDCK exclusion line. RDCK Security stopped map delivery to IC, stopped scheduled meetings between CFA Manager and IC.
- 2) Fire Guard Salvage: Good way to loose money in our terrain / timber types.
- 3) Post-Fire Rehab:
 - Suppression work “opened up” a lot of old non-status roads.
 - Post fire rehab has rendered those roads impassible – HUGE x-ditches.
 - Unusual broad community consensus of outrage and complaint.
- 4) **Access:**
 - **Fire area had a lot of very old, blocked access. Time required to re-open old access was not a help.**

Thank You to:



Visit us @ www.sifco.ca