



# Old Growth and Westbank First Nation Community Forest

BCCFA Virtual Conference October 2021

Dave Gill, Mic Werstuik



## WFN's Perspectives on "What is Old Growth"?

- More than age
- Human activities have and will continue to impact old forests
- Indigenous land stewardship has historically co-existed with old forests
- Old forests (particularly in the Interior) need to be stewarded with locally developed values, goals and principles.
- ....or be permitted to have natural processes run their course.

“How do we  
ensure we  
have old  
forests seven  
generations  
from now?”

How much?


Where?

Stewardship Principles



# Old Forest?

---



This Photo by Unknown Author is licensed under [CC BY-NC](#).















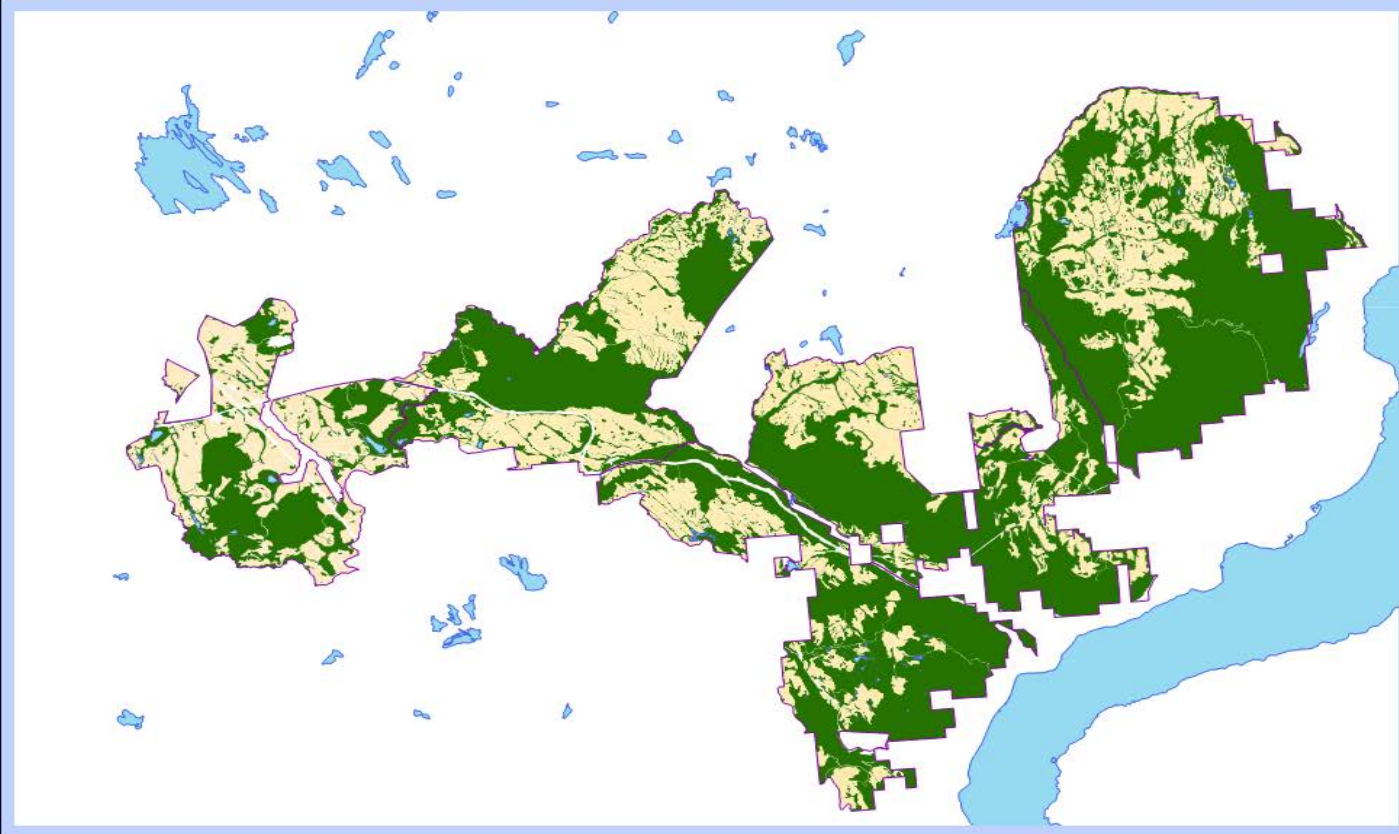
# WFN Seven Generation Stewardship Plan

A Vision for our forests seven generations  
from now




Old forests are but one of the values

## WFN Stewardship Zones

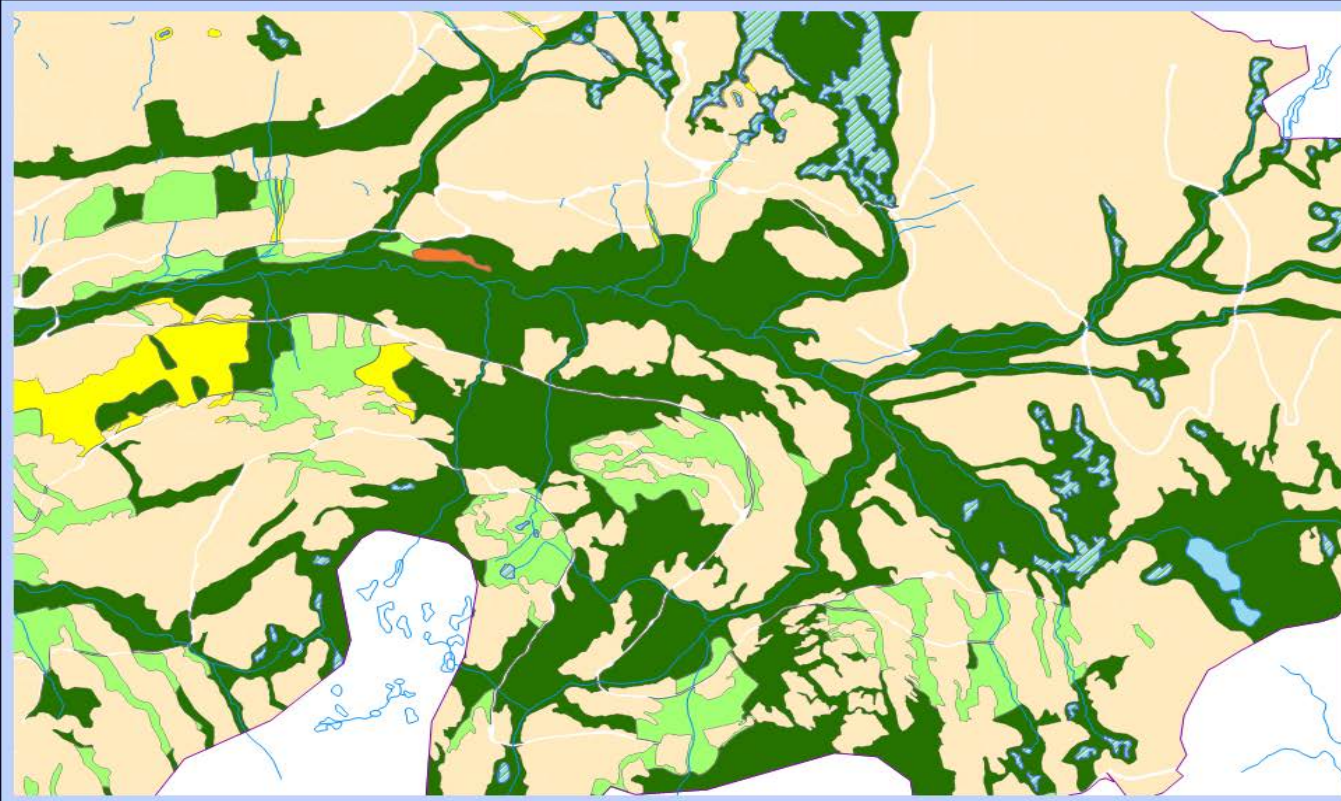
- Forest Operations Stewardship Zone (stewarded for multiple values including timber production)
- Old Forest Stewardship Zone (stewarded primarily for old forest values)



**Legend**

-  WFN Planning Area
-  OFSZ
-  FOSZ

# WFN - Old Forest Stewardship Zone - Seral Stage



**Legend**

- WFN Planning Area
- FOSZ

**OFSZ**

**Seral**

- Dec
- E
- M
- Me
- O
- R

# Summary



Old forests need to be cared for

Like our forest, our plan is not static

Old forests in the right places

Stewardship principles to recruit, maintain, and protect healthy old forests

Thank-you

Dave Gill, RPF - General Manager Ntityix Resources LP

Mic Werstuik, MBA – Community and Business Development Officer