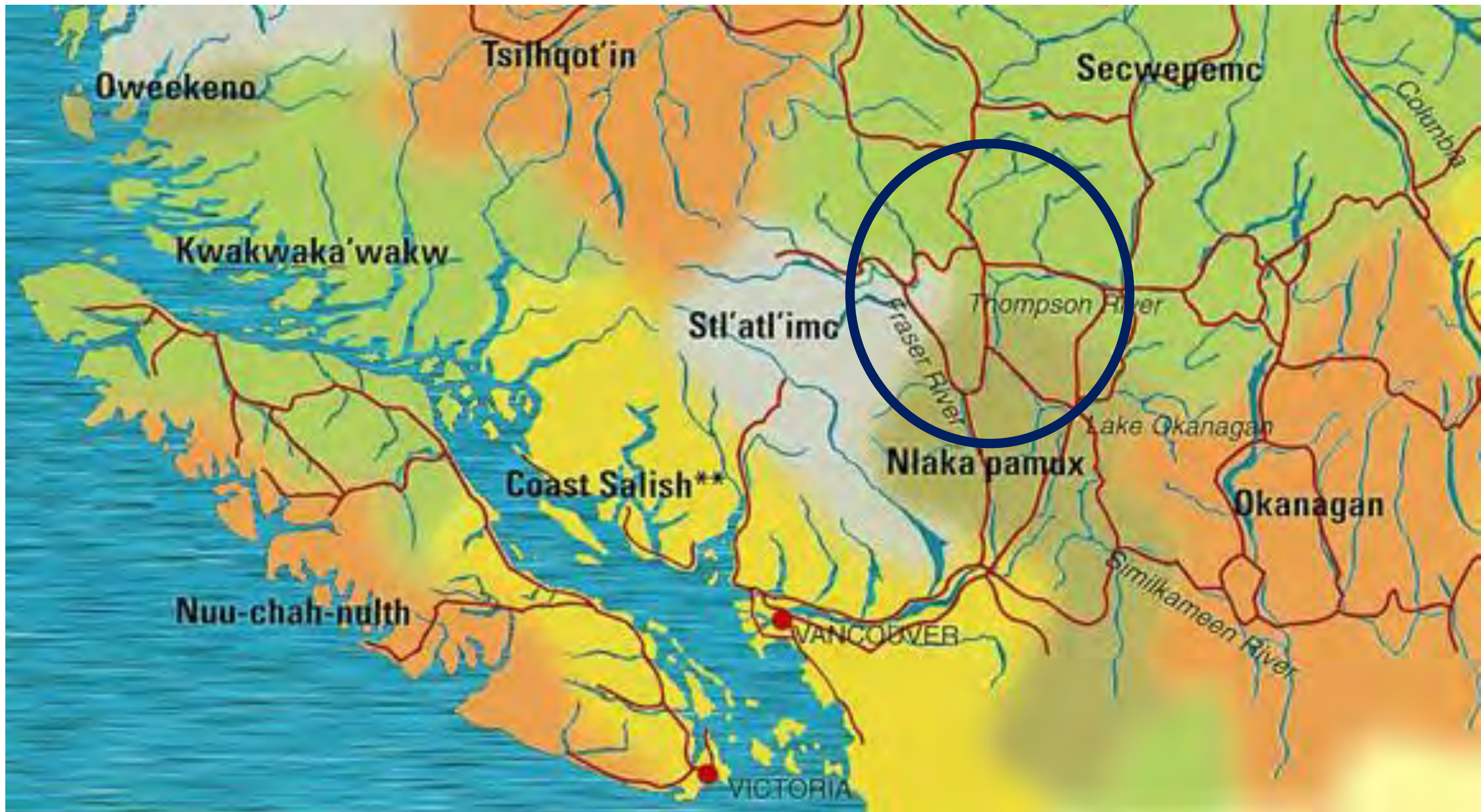
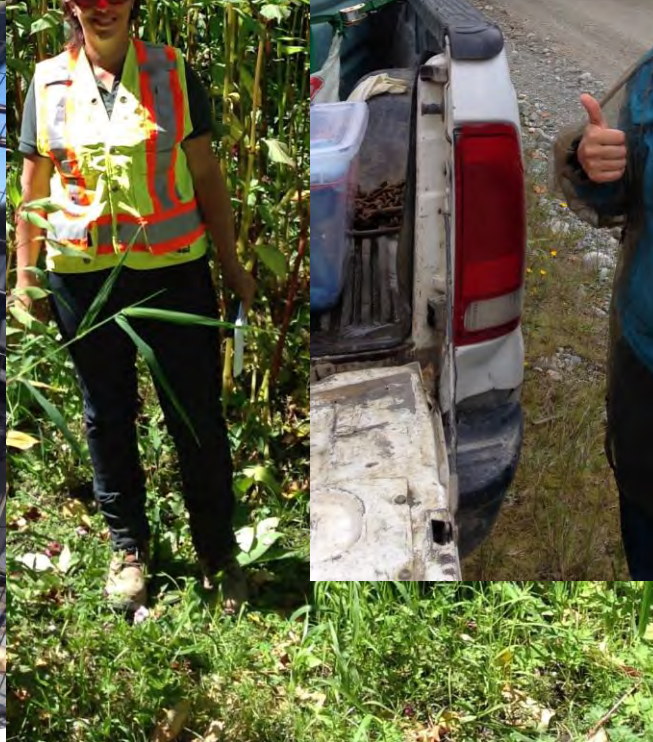


Forestry Rooted in Reciprocity: Building Community Resilience

Dr. Jennifer Grenz
Assistant Professor
Department of Forest Resources Management
UBC
Jennifer.grenz@ubc.ca





www.Indigenousecology.com



Indigenous Ecology Lab

[Home](#)

[About](#)

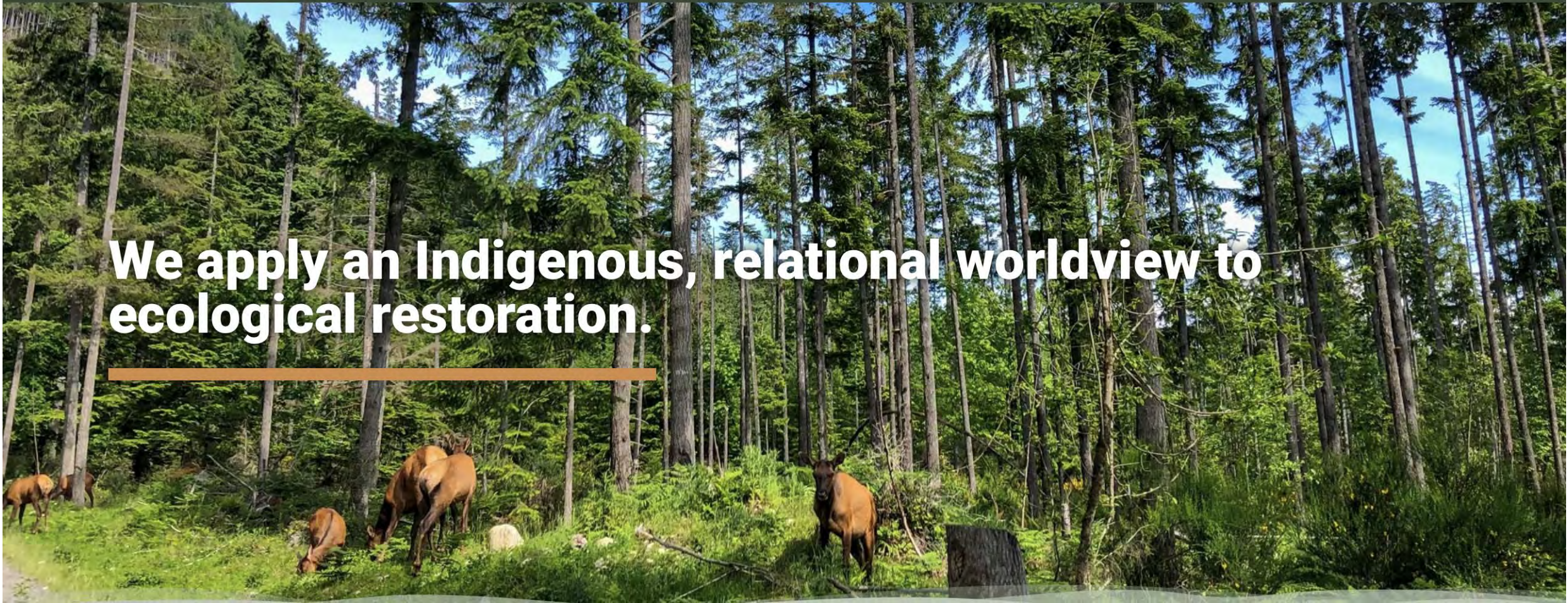
[Dr. Grenz](#)

[Team](#)

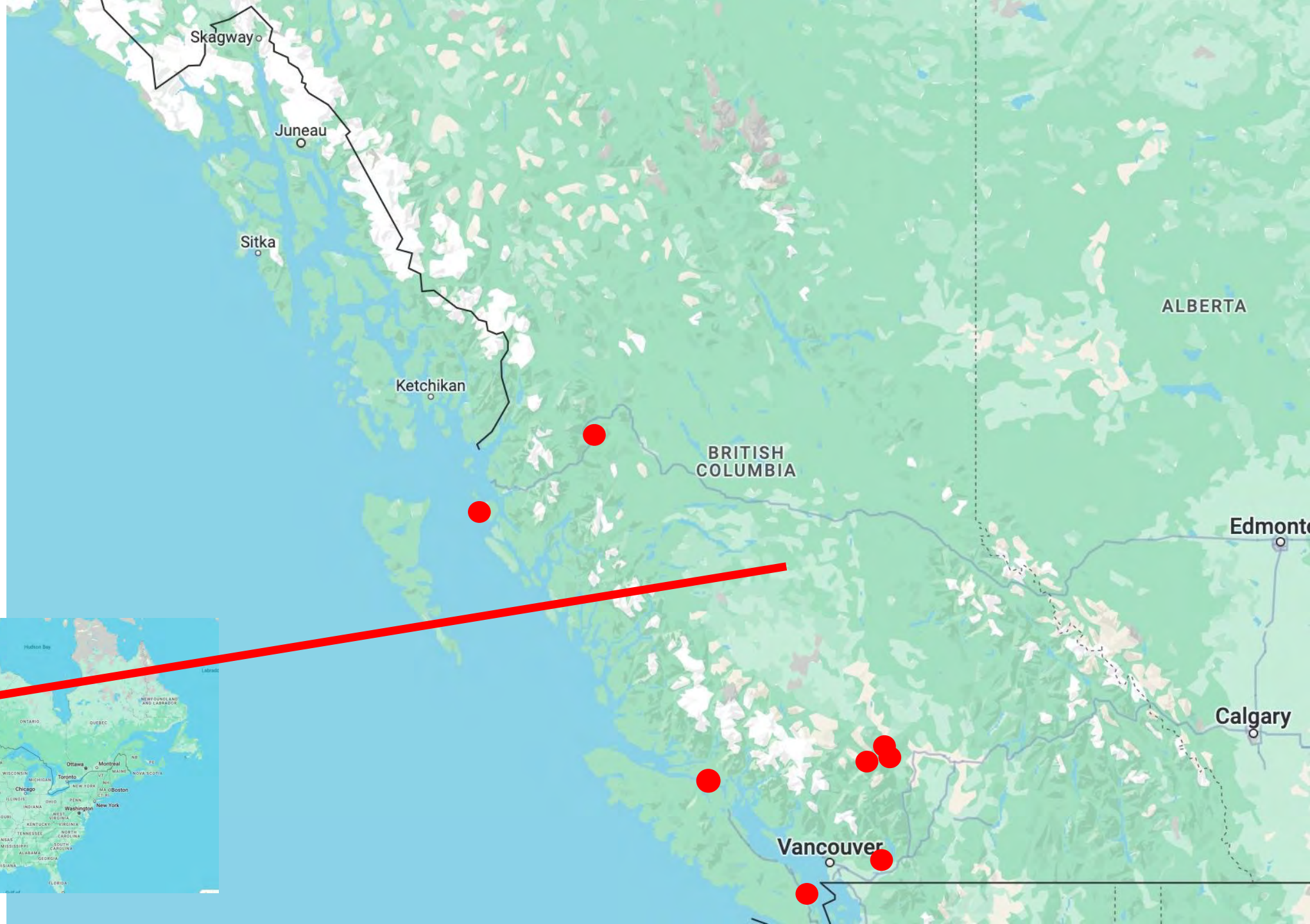
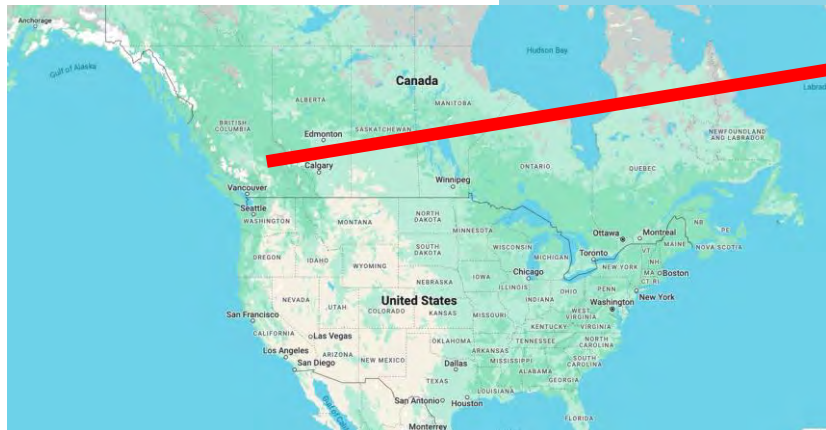
[Publications](#)

[Contact](#)

We apply an Indigenous, relational worldview to ecological restoration.



Communities
where we
serve



What is a forest?

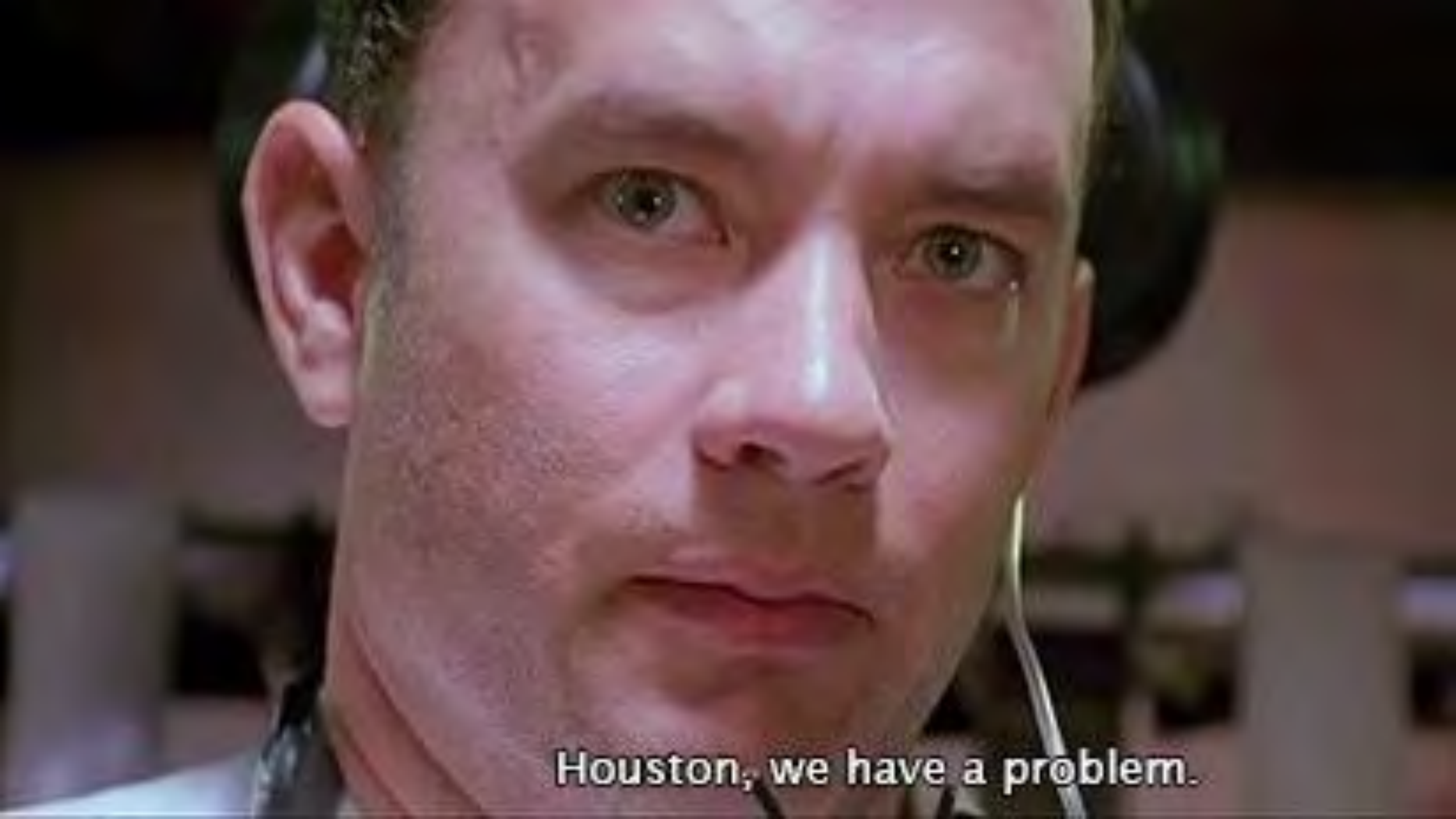
Oxford English Dictionary

"A large area covered chiefly with trees and undergrowth."

United Nations Food and Agriculture Organization (FAO)

"Land spanning more than 0.5 hectares with trees higher than 5 meters and a canopy cover of more than 10%, or trees able to reach these thresholds in situ..."

Excludes: Land predominantly used for agricultural practices"



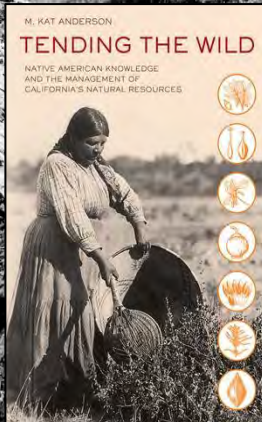
Houston, we have a problem.





**Know the truth of your lands and waters:
pre-colonial baselines**

Forget “Hunter-Gatherer”



Nez Perce Camas Harvest n.d.



Clam Garden



Gitxsan Ma'a



Kwakwaka'wakw
estuarine root garden



Wapato Garden 3800 yBP













Purposeful shaping of lands



"Adopting a Root" Turner et al. 2021



Legacy of post-colonial
land management



Shifting Baselines





Fortress Conservation

Privileged stewardship on
privileged landscapes

PRIVATE CONSERVATION AREA

Sensitive species are present and research projects are currently underway at the **Cowichan Garry Oak Preserve**.

In order to prevent disturbance and conserve the natural habitat,
no unauthorized public access is permitted.

To get involved as a volunteer or for more information,
please contact the Nature Conservancy of Canada at:
1-888-404-8428 or westcoast@natureconservancy.ca

Nature defines us.

www.natureconservancy.ca



Restoration Formula:

Remove invasive species +

Plant native species = Return to Eden

Resulting in:

Lack of human relationship with land



Conservation Values Conflicting with Sovereignty

- Anti-harvesting
- Anti-hunting
- Entitlement

What is reciprocity?

"The practice of exchanging things with others for mutual benefit, especially privileges granted by one country or organization to another."

— Oxford English Dictionary

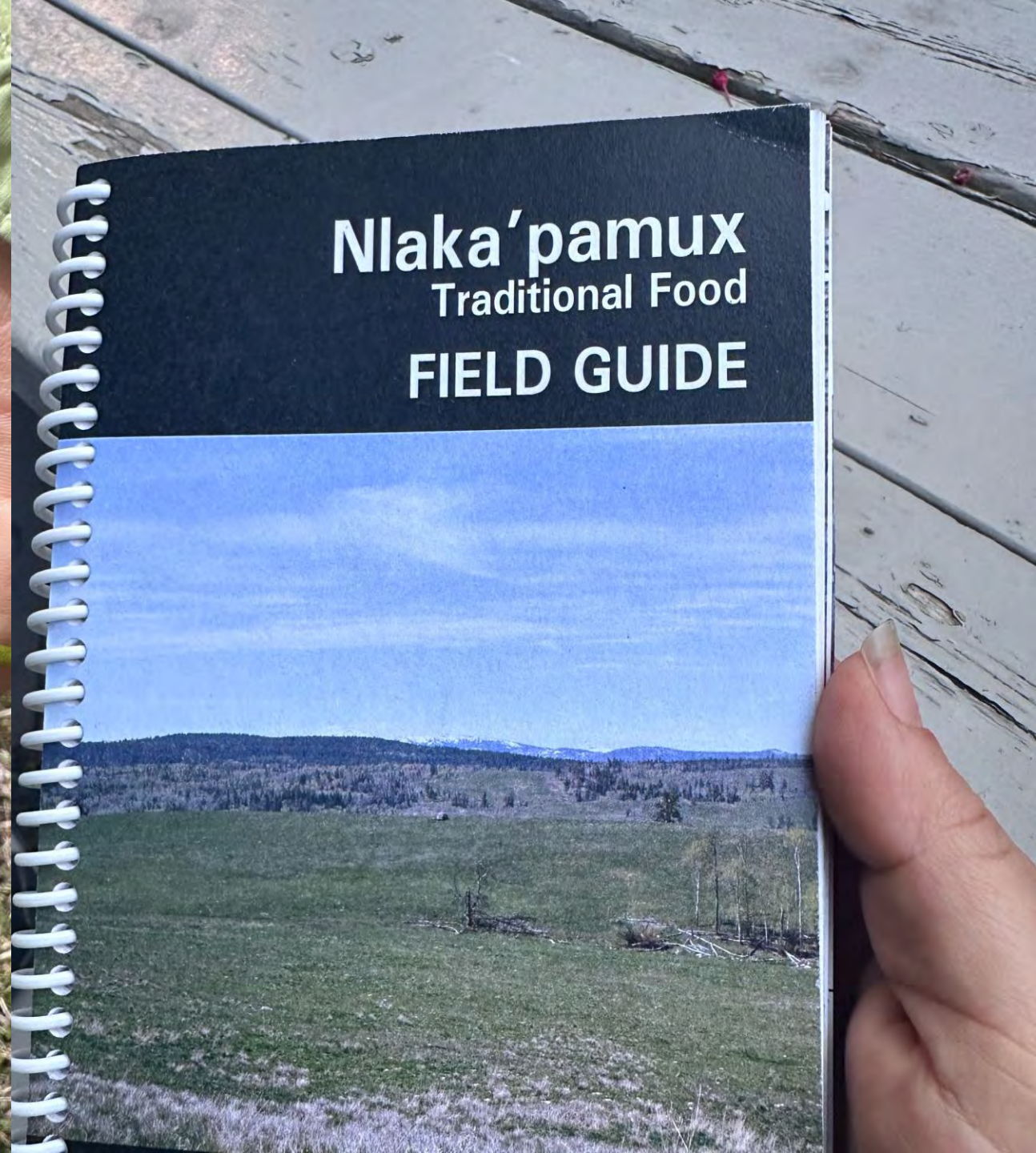
Not just as a transaction or exchange, but a **moral and relational responsibility** rooted in respect, gratitude, and care.

“All flourishing is mutual.”- Robin Wall Kimmerer



**ʔesk^wen'ste e tmix^w
ʔe k sk^wen'stc heʔwi**

**Take care of the land and
the land will take care of you**



Language and Stewardship

- Knowing plant relations
- Knowing harvesting protocols
- Practicing reciprocity



Language and Remembering the Land

- Historical ecology
- Pre-settler baselines
- Language offers hints where we may not have complete memory





Impacts of Loss of Stewardship

- Thick thatch/grass layers
- Compacted soils- make digging difficult
- Impacts to plant health- smaller bulb size, depleted soil nutrients
- Fire risk



**You can't see the
forest for the trees**







**Seeing the forest
beyond the trees**



Food Systems







**So how do we see the forest
beyond the trees?**

Reciprocity







McKay Creek wildfire vegetation plot: Grazing exclusion fence
UBC research project in direct collaboration with Ts'kw'aylaxw, Xwisten, T'it'q'et- P'egp'ig'l'ha in addition to Lillooet Tribal Council, St'at'imc Government Services & Lillooet Regional Invasive Species Society.

This project is looking at how plants grow back in areas that were mildly, moderately, and severely burned. It is also looking at the effects of cattle grazing and if invasive plants are spreading.

If you are interested in knowing more

Contact: indigenousecologylab@gmail.com <https://www.indigenousecology.com/>



Ts'kw'aylaxw
FIRST NATION



XWISTEN











Ye'yumnuts

...one of many places that Quw'utsun and other Coast Salish people have used and occupied for thousands of years. Not all of these places are now reserve lands, or have had their Hult'hamnum

Hydrogen (molar) flux

Phulpip (Oryzias latipes)
Ginhw (Callinectes sapidus)
Tungo (Plecotus)
Sinhltun (Labeo rohita)
Singlod (Mikania)
Siengut (Nepenthes)
Sted (Halibut)
Ma (Waterfowl)

FIGURE 1. Examples of habitats sampled from Kulu. Only grasses, traditional tobacco, and trees shown. Representative grasses only are present in all slopes of the study or territories.

nephrite

Ve yutimuts

Things from Far Away

...and...
...relations with...
...people in far away places...
...and...
...and...

obsidian

This mic. slide is made of clear, flat, type of acrylic glass (a thick, clear sample of obsidian, not Newbery's mic. slide). Clear.

















LULUMEXUN
Lands & Natural Resources
DEPARTMENT



Hulitun Spulhxun/Tumuhw (Nurturing Fields) Nursery

NURSERY CARE
ROOT CAMP

April 9 - 11, 11AM - 2PM

A great opportunity for Quw'utsun Members to learn about and care for traditional food and medicinal plants. RSVP NOW!!















What is forestry?

Forestry is the practice of relating to and caring for forest systems in ways that honor their ecological, cultural, and spiritual integrity — recognizing forests as living communities rather than collections of resources.

Rooted in reciprocity, it involves stewarding the relationships among trees, lands, waters, animals, and people—with a responsibility to give back more than we take and sustain life for future generations.

"This beautiful book can completely change how we approach science, using both Indigenous and Western perspectives, and how we can work collaboratively to help foster balance in nature."

SUZANNE SIMARD, AUTHOR OF *FINDING THE MOTHER TREE*

MEDICINE WHEEL FOR THE PLANET

A JOURNEY TOWARD PERSONAL
AND ECOLOGICAL HEALING



DR. JENNIFER GRENZ



FOR MORE INFORMATION



Penguin
Random House
KNOPF CANADA

**M
I
N
N
E
S
O
T
A**



Ts'kw'aylaxw
FIRST NATION



Sts'ailes



THE UNIVERSITY OF BRITISH COLUMBIA
Faculty of Forestry



THE UNIVERSITY OF BRITISH COLUMBIA
Faculty of Land and Food Systems



Natural Sciences and Engineering
Research Council of Canada

Conseil de recherches en sciences
naturelles et en génie du Canada

Canada



Social Sciences and Humanities
Research Council of Canada

Conseil de recherches en
sciences humaines du Canada

Canada



**National Centre for
Truth and Reconciliation**

UNIVERSITY OF MANITOBA



KITSELAS
FIRST NATION



Cowichan Tribes



Metlakatla First Nation



**Nlaka'pamux Nation
Tribal Council**

NATURE TRUST
BRITISH COLUMBIA

