

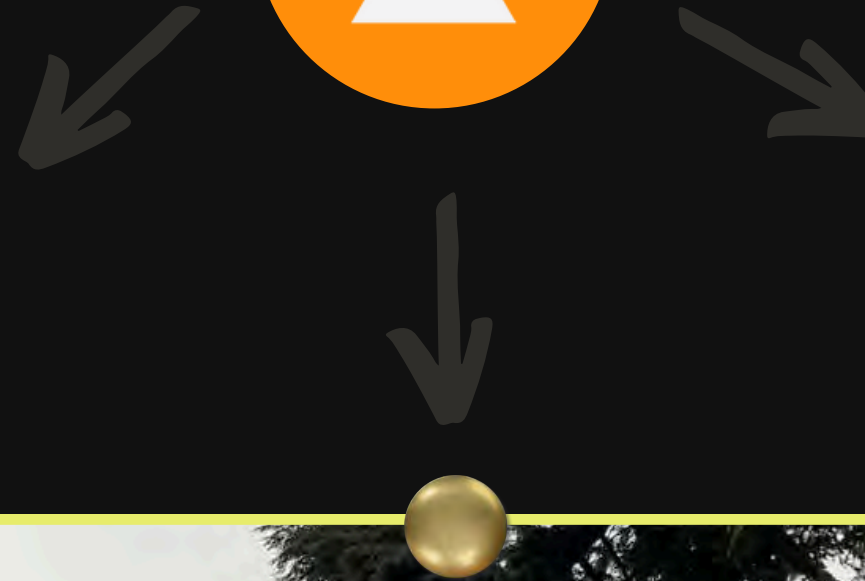


INTEGRATED
OPERATIONS GROUP

WWW.INTEGRATEDOPS.CA

WHAT WE DO

INTEGRATED OPS



HELI LOGGING

- FALLING
- SALVAGE



CLIMBING

- SSH
- DANGER TREE MGMT
- UTILITIES
- WINDFIRMING



GROUND BASED

- COMMERCIAL THINNING
- FIRE MITIGATION

INTEGRATED OPS

GROUND-BASED OPERATIONS

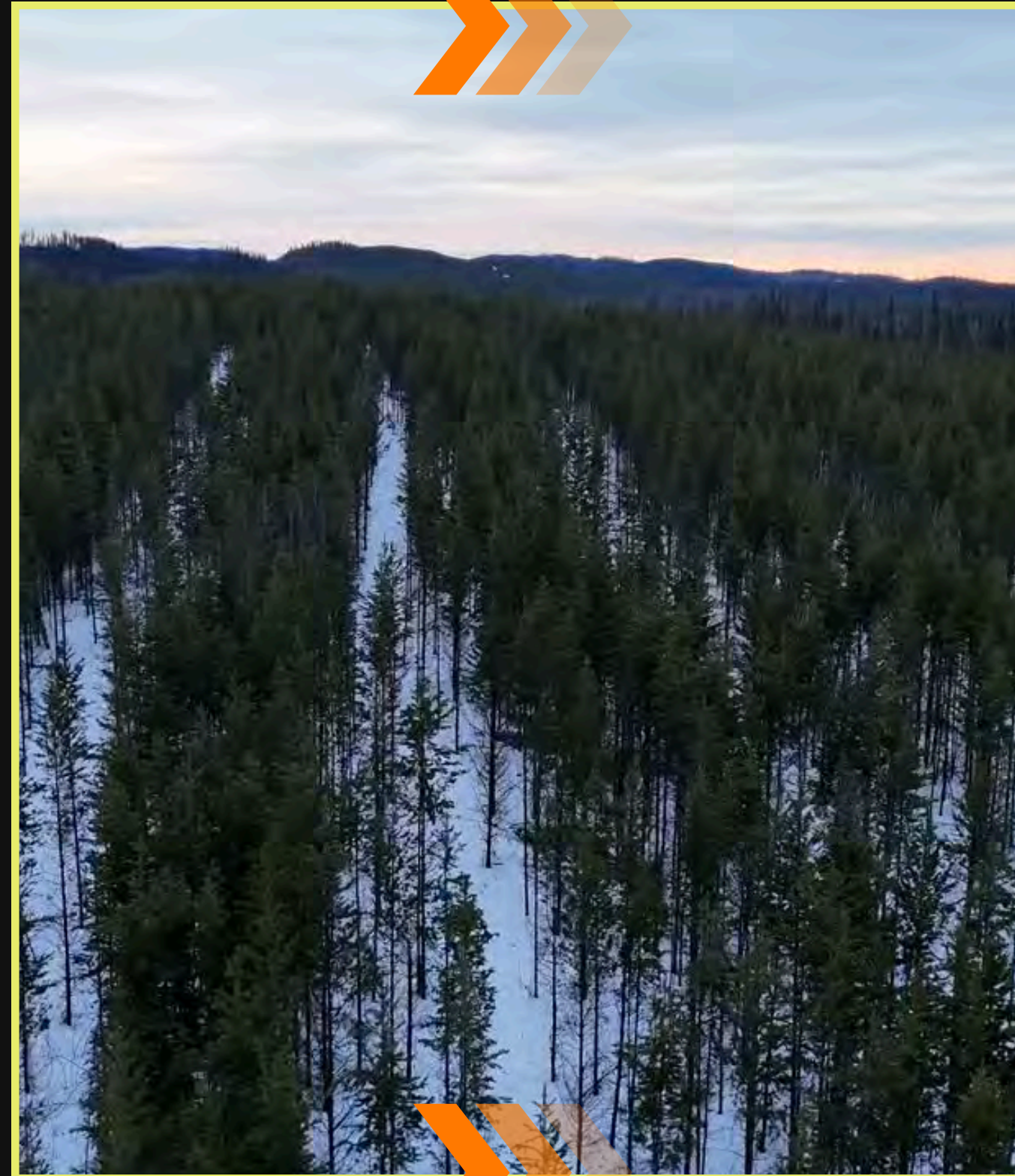
Commercial Thinning & Fire Mitigation



WWW.INTEGRATEDOPS.CA

COMMERCIAL THINNING

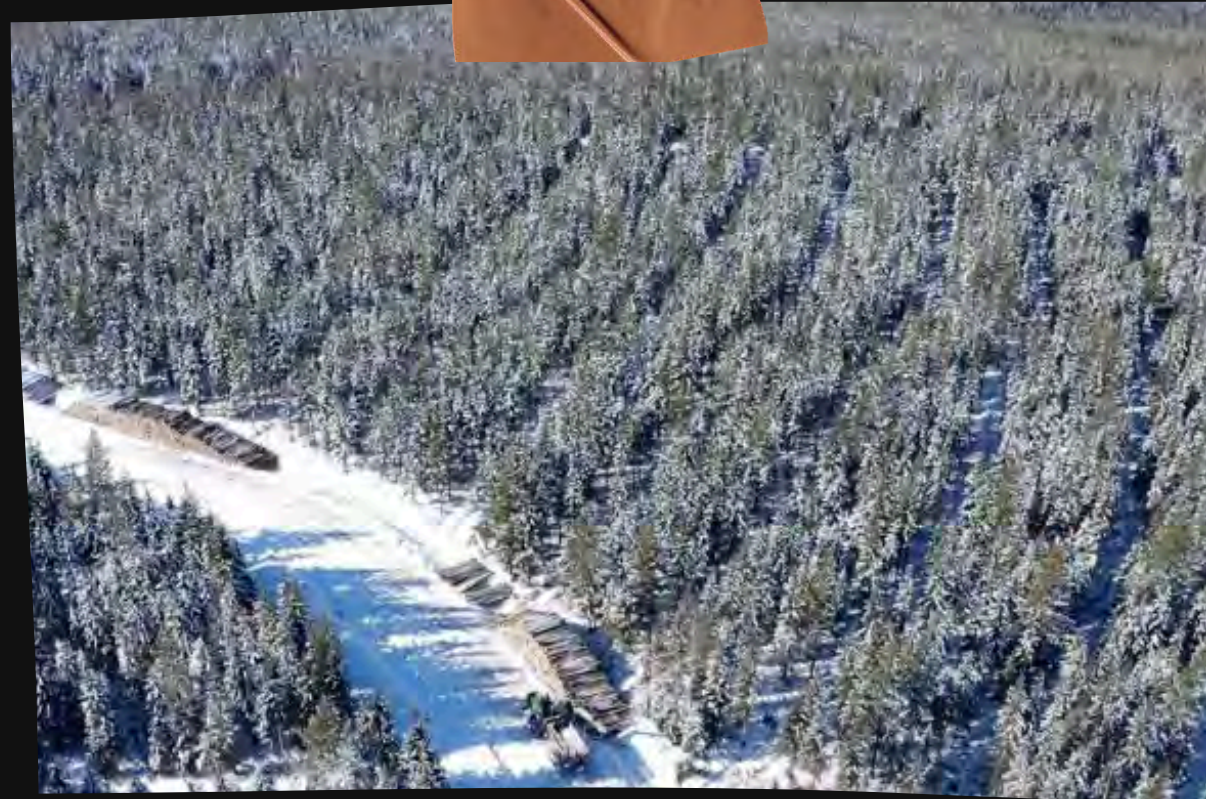
Why Thin Our Forests?



- Improves tree vigor and stand condition
- Forest fire mitigation and insect / disease spread
- Enhances timber quality and recovery when thinning from below
- Supports ecosystem resilience and biodiversity

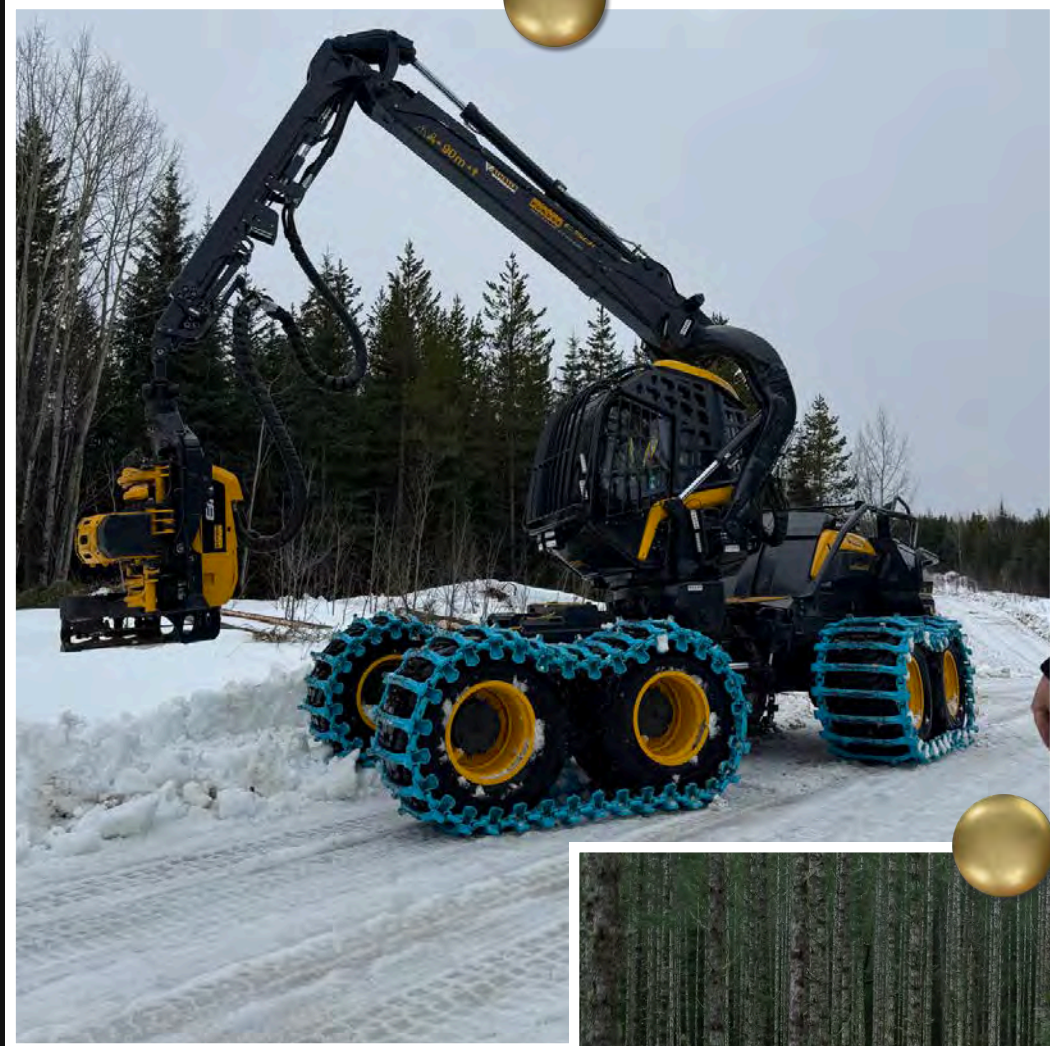
COMMERCIAL THINNING

Key Thinning Objectives



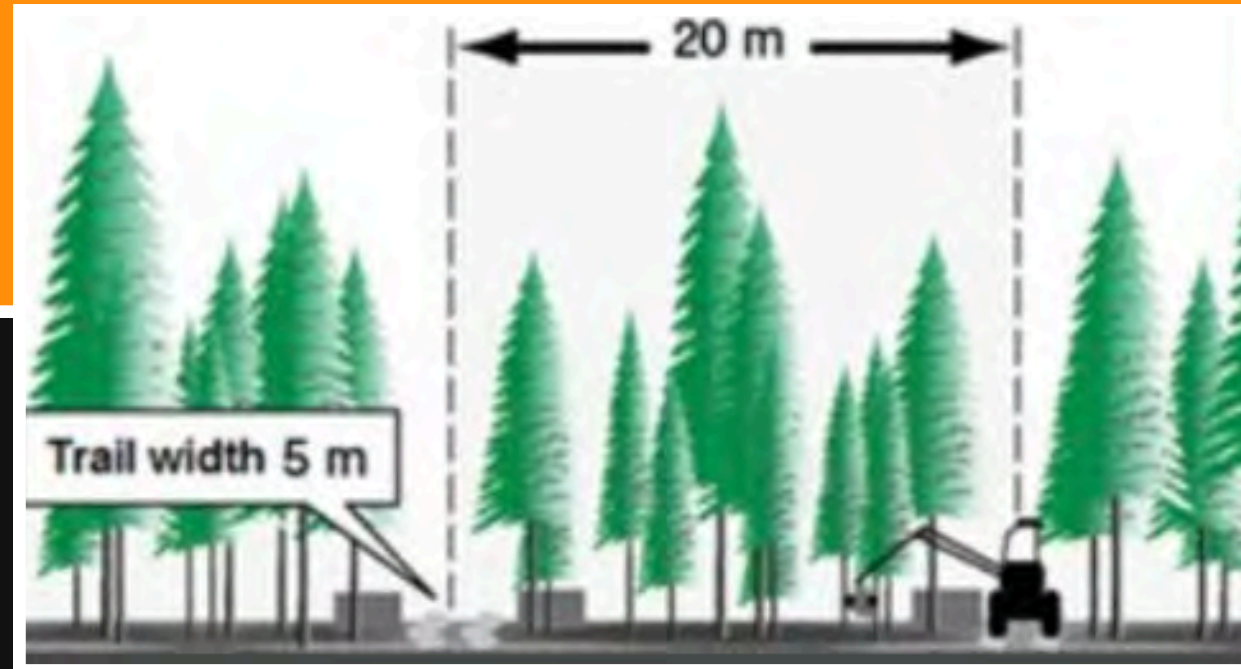
- ✓ Improve stand health and log quality
- ✓ Enhance fibre utilization and reduce waste.
- ✓ Innovative harvesting in BC
- ✓ Supporting existing industries (sawmills/pulp mills) and opening up new markets (Biomass)
- ✓ Balance ecological, social, and economic goals





BEST PRACTICES FOR THINNING

- Remove dead/diseased and/or deformed trees first.
- Retain trees with 30–50% live crown.
- Keep machine trails $< 5\text{m}$ and trail area $< 25\%$.



SINGLE-GRIP HARVESTER

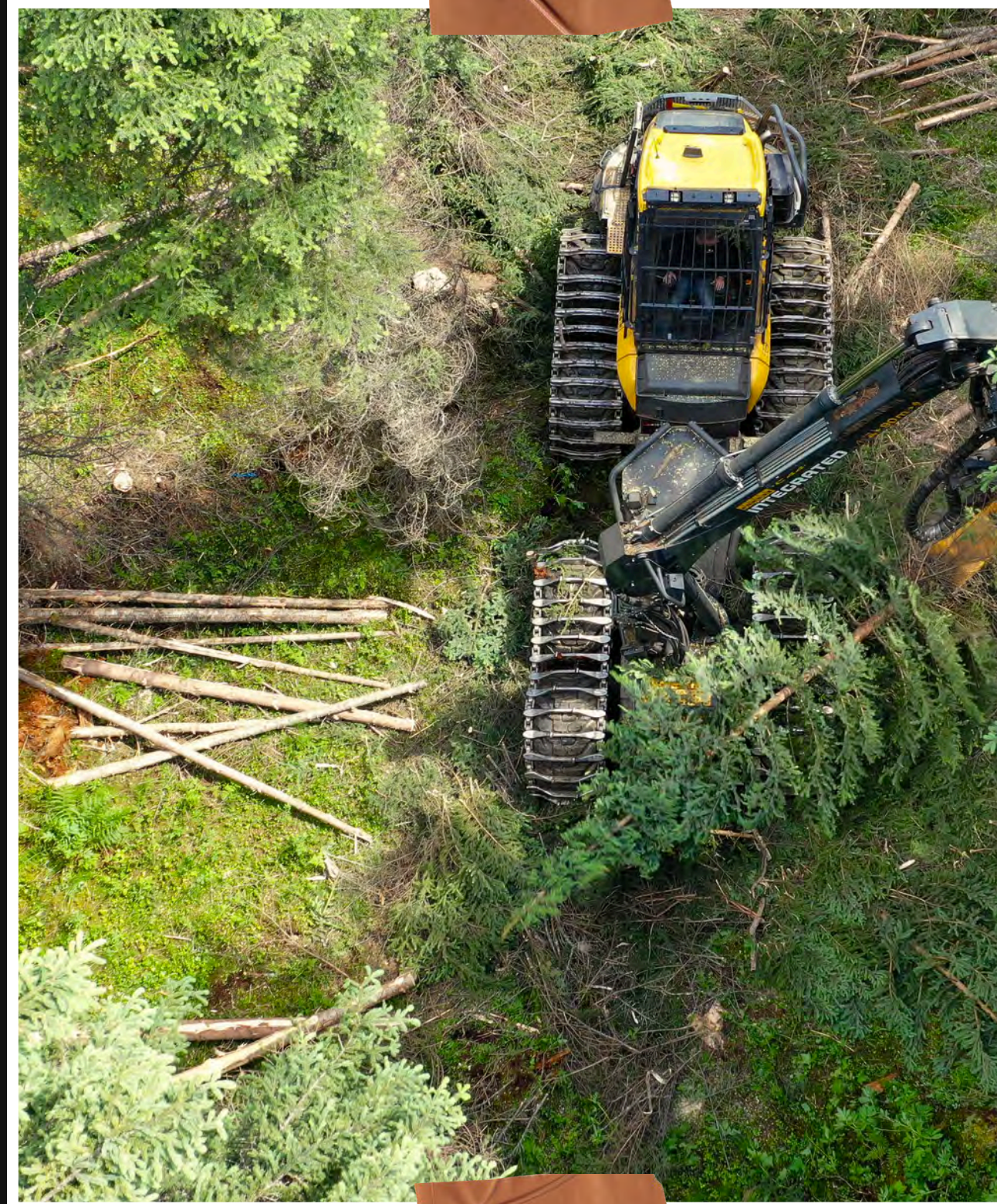


CUT TO LENGTH EQUIPMENT

- **High Precision Felling** – Selectively removes individual trees with minimal impact on surrounding stand.
- **Integrated Processing** – Fells, delimbs, and cuts logs to length in one operation.
- **Consistent Log Quality** – Automated measuring ensures uniform log lengths and optimized value recovery.
- **Reduced Labour Requirement** – One operator performs multiple tasks, lowering crew size and cost.

COMMERCIAL THINNING

Cut to Length Equipment

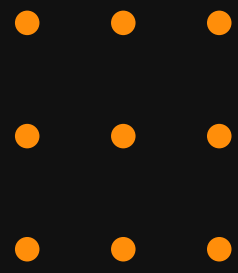


- ✓ **Minimizes Soil Disturbance** – Operates on designated trails, preserving residual stand and forest floor
- ✓ **Efficient Log Extraction** – Quickly transports logs from thinning sites to roadside (no landings required)
- ✓ **Improved Productivity** – Reduces handling and increases harvesting efficiency
- ✓ **Selective Thinning Capability** – Allows precise removal of selected trees without damaging surrounding ones
- ✓ **Reduced Environmental Impact** – Lower ground pressure, minimize compaction and rutting

An aerial view of a yellow and black Ponsse Scorpion harvester with blue tracks operating in a snowy forest. The machine is positioned in a narrow path between tall evergreen trees. The ground is covered in snow, and some fallen branches are visible. The harvester's arm is extended upwards. A small, light brown rectangular object is visible at the top center of the frame.

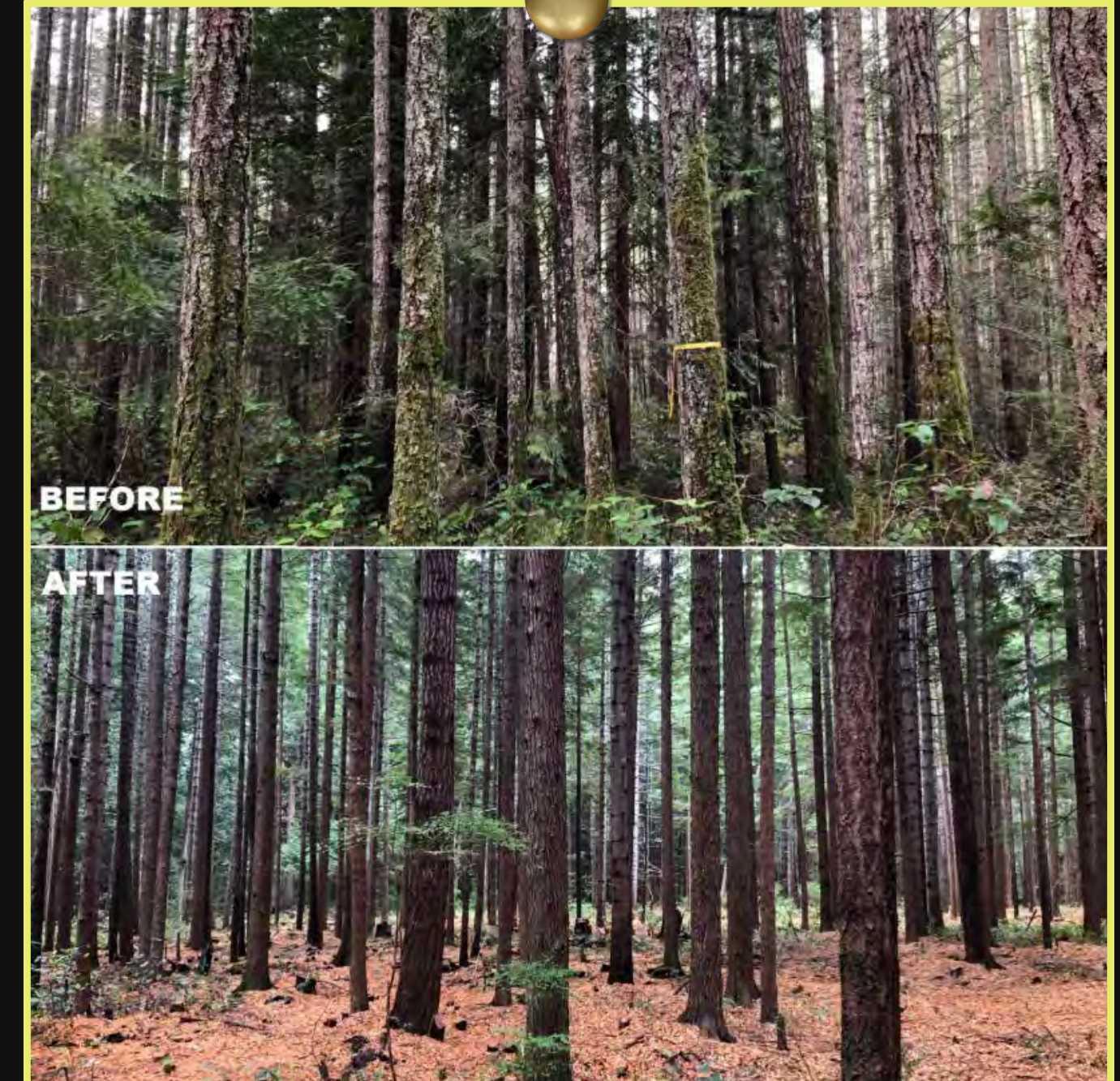
THINNING IN THE INTERIOR

PONSSE SCORPION HARVESTER



FIRE MITIGATION

Custom mini-buncher with purpose built
hot-saw to collect non-merch ladder fuel



Area treated

**Area
untreated**



INTEGRATED OPS

TRAINING



FINAL THOUGHTS

- Thinning is a powerful tool for sustainable forest management including sustainable harvest, forest fire mitigation and habitat enhancement.
- Requires careful planning, monitoring, adaptation and proper training of forestry staff and operators.
- Aligns with BC's goals for healthy ecosystems and timber supply.
- Social license



INTEGRATED OPS



THANKS FOR LISTENING

QUENTIN STEFANI

Managing Partner, Operations
Manager, Commercial Thinning

SIG KEMMLER

BCFSC Faller Supervisor,
Managing Partner and Director

OUR WEBSITE



[@INTEGRATED_OPS](https://www.instagram.com/INTEGRATED_OPS)



WWW.INTEGRATEDOPS.CA



[@INTEGRATEDOPS](https://www.facebook.com/INTEGRATEDOPS)