

Cheakamus Community Forest

BC Community Forest Association
Conference
June 2011

RESORT MUNICIPALITY OF WHISTLER
4325 Blackcomb Way Whistler, British Columbia Canada V8E 1S4
TEL: 604 932 5535 FAX: 604 932 5535
www.whistler.ca

Cheakamus Community Forest

RESORT MUNICIPALITY OF WHISTLER
4325 Blackcomb Way Whistler, British Columbia Canada V8E 1S4
TEL: 604 932 5535 FAX: 604 932 5535
www.whistler.ca

Cheakamus Community Forest

RESORT MUNICIPALITY OF WHISTLER
4325 Blackcomb Way Whistler, British Columbia Canada V8E 1S4
TEL: 604 932 5535 FAX: 604 932 5535
www.whistler.ca

Organization

- Limited Partnership Agreement : Lil'wat Nation, Squamish Nation & Resort Municipality of Whistler
- Not For Profit Society
- Richmond Plywood, contracted forest manager
- 20,000 m³ Annual Allowable Cut
- CCF tenure signed April 9, 2009

RESORT MUNICIPALITY OF WHISTLER
4325 Blackcomb Way Whistler, British Columbia Canada V8E 1S4
TEL: 604 932 5535 FAX: 604 932 5535
www.whistler.ca

Organization

CCF Society Board of Directors

- Peter Ackhurst RMOW(Chair)
- Mayor Ken Melamed RMOW
- Chief Lucinda Phillips Lil'wat Nation
- Geordie Ferguson Lil'wat Nation
- Chief Bill Williams Squamish Nation
- Jeff Fisher Squamish Nation
- Heather Beresford RMOW (Secretary Treasurer)

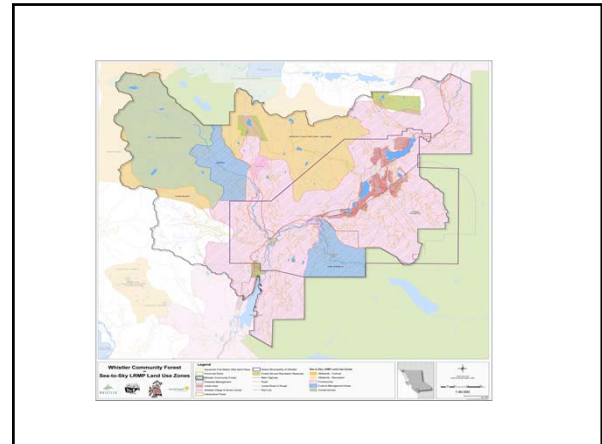
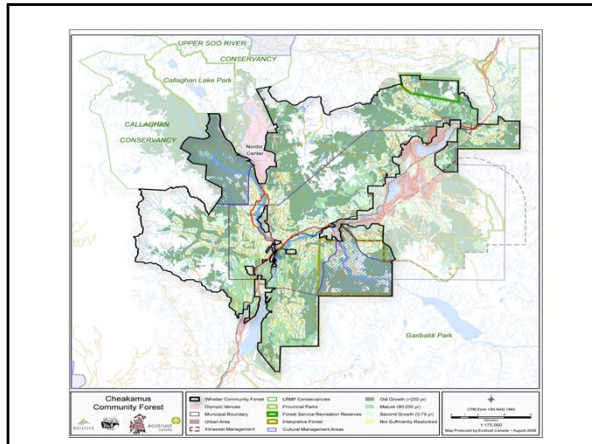
RESORT MUNICIPALITY OF WHISTLER
4325 Blackcomb Way Whistler, British Columbia Canada V8E 1S4
TEL: 604 932 5535 FAX: 604 932 5535
www.whistler.ca

Organization

Richmond Plywood acts as Operations Contractor

- Wood goes to RichPly mill in Vancouver
- Local needs can be supplied if requested

RESORT MUNICIPALITY OF WHISTLER
4325 Blackcomb Way Whistler, British Columbia Canada V8E 1S4
TEL: 604 932 5535 FAX: 604 932 5535
www.whistler.ca



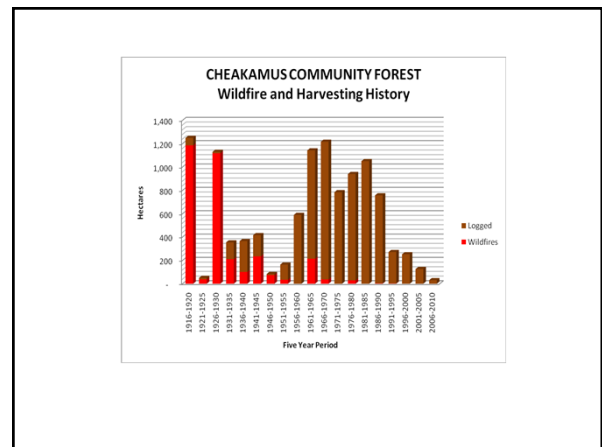
Land Base

Forest Area

– Old Growth	12,175
– Second Growth	6,906
– NSR	404
– Non productive/alpine	<u>10,775</u>
Total	30,260 ha

- **THLB ~6500 hectares**
- The legally protected areas total 14,983 ha
- Timber Licence - additional 1300 ha of old growth

RESORT MUNICIPALITY OF WHISTLER
4325 Blackcomb Way Whistler, British Columbia Canada V8W 1S4
TEL: 604 932 5535 FAX: 604 932 5535
WWW.WHISTLER.CA



Goals

- Ecosystem Based Management approach
- Strengthened Relationships between communities
- Employment & Capacity Building for First Nations
- Public Education
- Revenue to enhance the Community Forest

RESORT MUNICIPALITY OF WHISTLER
4325 Blackcomb Way Whistler, British Columbia Canada V8W 1S4
TEL: 604 932 5535 FAX: 604 932 5535
WWW.WHISTLER.CA

Innovations: EBM Approach

WHY EBM?

- Aligns with the partners' existing land use plans and community values.
- Desire to move away from "business as usual"
- Forest Stewardship Council certification?

RESORT MUNICIPALITY OF WHISTLER
4325 Blackcomb Way Whistler, British Columbia Canada V8W 1S4
TEL: 604 932 5535 FAX: 604 932 5535
WWW.WHISTLER.CA

Challenges

Completing & getting Forest Stewardship Plan approved



2010 Logging
Brew Valley

RESORT MUNICIPALITY OF WHISTLER
4325 Blackcomb Way TEL: 604 932 5535
Whistler, British Columbia W: 604 932 5535
Canada V8W 1S4 FAX: 604 935 8109
www.whistler.ca




2009 Logging




RESORT MUNICIPALITY OF WHISTLER
4325 Blackcomb Way TEL: 604 932 5535
Whistler, British Columbia W: 604 932 5535
Canada V8W 1S4 FAX: 604 935 8109
www.whistler.ca




2010 Logging




RESORT MUNICIPALITY OF WHISTLER
4325 Blackcomb Way TEL: 604 932 5535
Whistler, British Columbia W: 604 932 5535
Canada V8W 1S4 FAX: 604 935 8109
www.whistler.ca



2011 Logging



RESORT MUNICIPALITY OF WHISTLER
4325 Blackcomb Way TEL: 604 932 5535
Whistler, British Columbia W: 604 932 5535
Canada V8W 1S4 FAX: 604 935 8109
www.whistler.ca



Challenges

FUNDING for other projects important to CCF:

- FSC Certification
- EBM Plan
- Old Forest Plan
- Value Added Workshop
- Commercial Back Country Operators Workshop/Integrated Plans
- Road Atlas

RESORT MUNICIPALITY OF WHISTLER
4325 Blackcomb Way TEL: 604 932 5535
Whistler, British Columbia W: 604 932 5535
Canada V8W 1S4 FAX: 604 935 8109
www.whistler.ca




Challenges


- Mapping that is understood by public
- Getting MOF Permits in place
- Finding enough volume

2011 Harvesting:
Rainbow
Brandywine
Fee
Powder
Wedge

~20,000 m³



RESORT MUNICIPALITY OF WHISTLER
4325 Blackcomb Way TEL: 604 932 5535
Whistler, British Columbia W: 604 932 5535
Canada V8W 1S4 FAX: 604 935 8109
www.whistler.ca



Challenges

CCF Landbase intensely used for recreation

E.g. 2011 Logging: Rainbow03
Runaway Train mountain bike trail



RESORT MUNICIPALITY OF WHISTLER
4325 Blackcomb Way Whistler, British Columbia Canada V0N 1B4
TEL: 604 932 5535 FAX: 604 932 5535
www.whistler.ca



Challenge AND Opportunity

PUBLIC AWARENESS

Friendly, positive, polite....

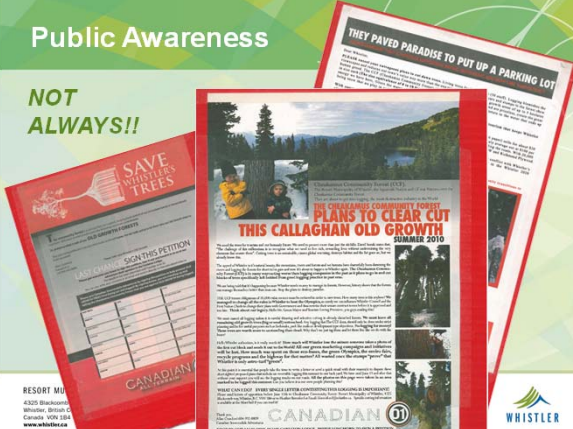


RESORT MUNICIPALITY OF WHISTLER
4325 Blackcomb Way Whistler, British Columbia Canada V0N 1B4
TEL: 604 932 5535 FAX: 604 932 5535
www.whistler.ca




Public Awareness

NOT ALWAYS!!





RESORT MUNICIPALITY OF WHISTLER
4325 Blackcomb Way Whistler, British Columbia Canada V0N 1B4
TEL: 604 932 5535 FAX: 604 932 5535
www.whistler.ca



Lessons Learned

- Seek out the public, form relationships
- Stay in close touch with MOF
- Start planning/paperwork early
- Apply for every possible grant

RESORT MUNICIPALITY OF WHISTLER
4325 Blackcomb Way Whistler, British Columbia Canada V0N 1B4
TEL: 604 932 5535 FAX: 604 932 5535
www.whistler.ca

RESORT MUNICIPALITY OF WHISTLER
4325 Blackcomb Way Whistler, British Columbia Canada V0N 1B4
TEL: 604 932 5535 FAX: 604 932 5535
www.whistler.ca

