

How to prepare for a Board audit.

*Presentation to BCCFA Conference
June 14, 2014 – Williams Lake, BC*

Chris Mosher, CA, EP(CEA)

Daryl Spencer, RPF



The independent watchdog for sound forest and range practices in British Columbia.

- What is the Forest Practices Board?
- What to Expect During a Board Audit?
 - What are the Steps in a Forest Practices Board Audit?
 - Examples of Good and Not So Good Practices



Agenda



*To serve the public interest as
the independent watchdog for
sound forest and range
practices in British Columbia.*

3.



Forest
Practices
Board

FPB Mission



The Board encourages:

- Sound forest and range practices that warrant public confidence
- Fair and equitable application of the *Forest and Range Practices Act* (FRPA) and the *Wildfire Act* (WA)
- Continuing improvements in forest and range practices



FPB Fundamental Purpose



What we do:

- **Audits** – must undertake audits of compliance & enforcement of FRPA and VWA
- **Investigations** – must deal with public complaints; may conduct special investigations
- **Appeals** – may appeal decisions to the Forest Appeals Commission
- **Reporting** – must report findings to public & government
- **Recommendations** – may make recommendations





Steps in a Board Audit:

- **Planning and Preparation**
- **Fieldwork**
- **Analysis**
- **Reporting**

6.



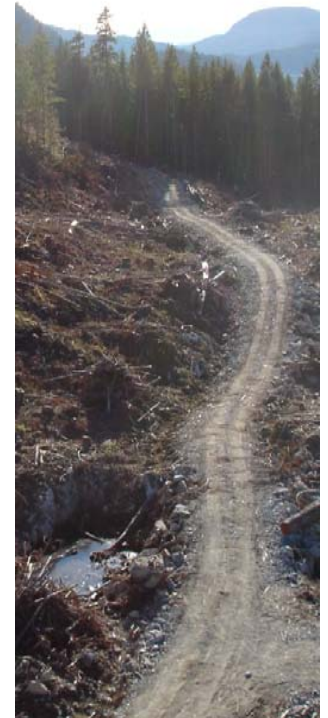
Compliance Audit Phases



Audit Selection

- A District is selected randomly
- Based on key issues (visuals, forest health, fisheries, etc.), Board priorities, and who we have already audited in that district – a licensee, or a group of licensees are selected
- Ensures audits are focused on key issues, include different licence sizes and types, and are relevant to the public

7.



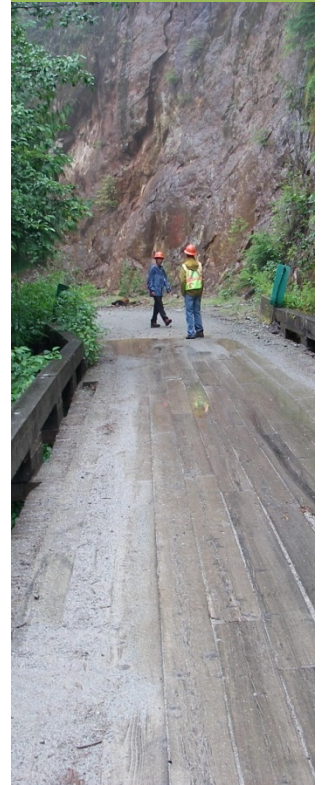
Planning and Preparation



Notification

- About 5 weeks before we plan to start an audit, you will receive a phone call from me – formally notifying you that your licence has been selected for an audit!
- I will ask for the name of a “key contact” – who do you want handling the audit from your end?

8.



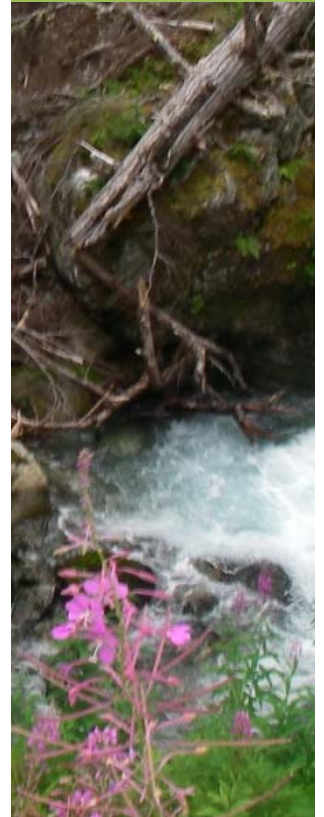
Planning and Preparation



Information Gathering

- Once we have a key contact, our lead auditor will start gathering audit information
 - # cutblocks harvested
 - Kilometres of road constructed, maintained or deactivated
 - List of bridges
 - # of cutblocks planted
 - # of cutblocks that reached free-growing

9.



Forest
Practices
Board

Planning and Preparation



Getting on the Ground

- The audit team – 2 to 4 people, usually spend from 1 to 5 days in the field.
- The length of time spent on the ground is based on the size of the operation and the number of issues noted.

10.



Forest
Practices
Board

Fieldwork



11.

12.



13.





15.



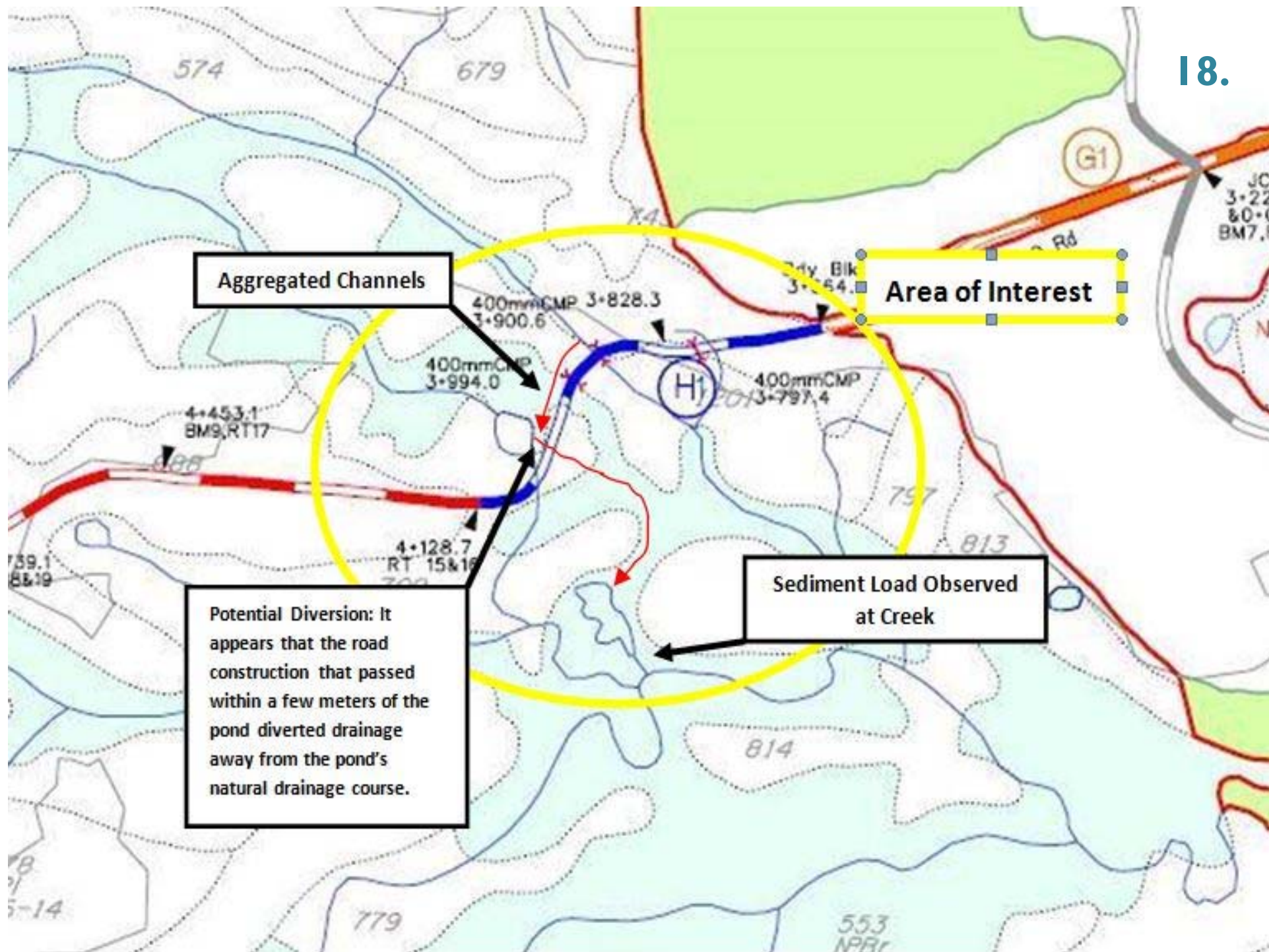
16.



17.



18.





20.



21.



22.





No SIM

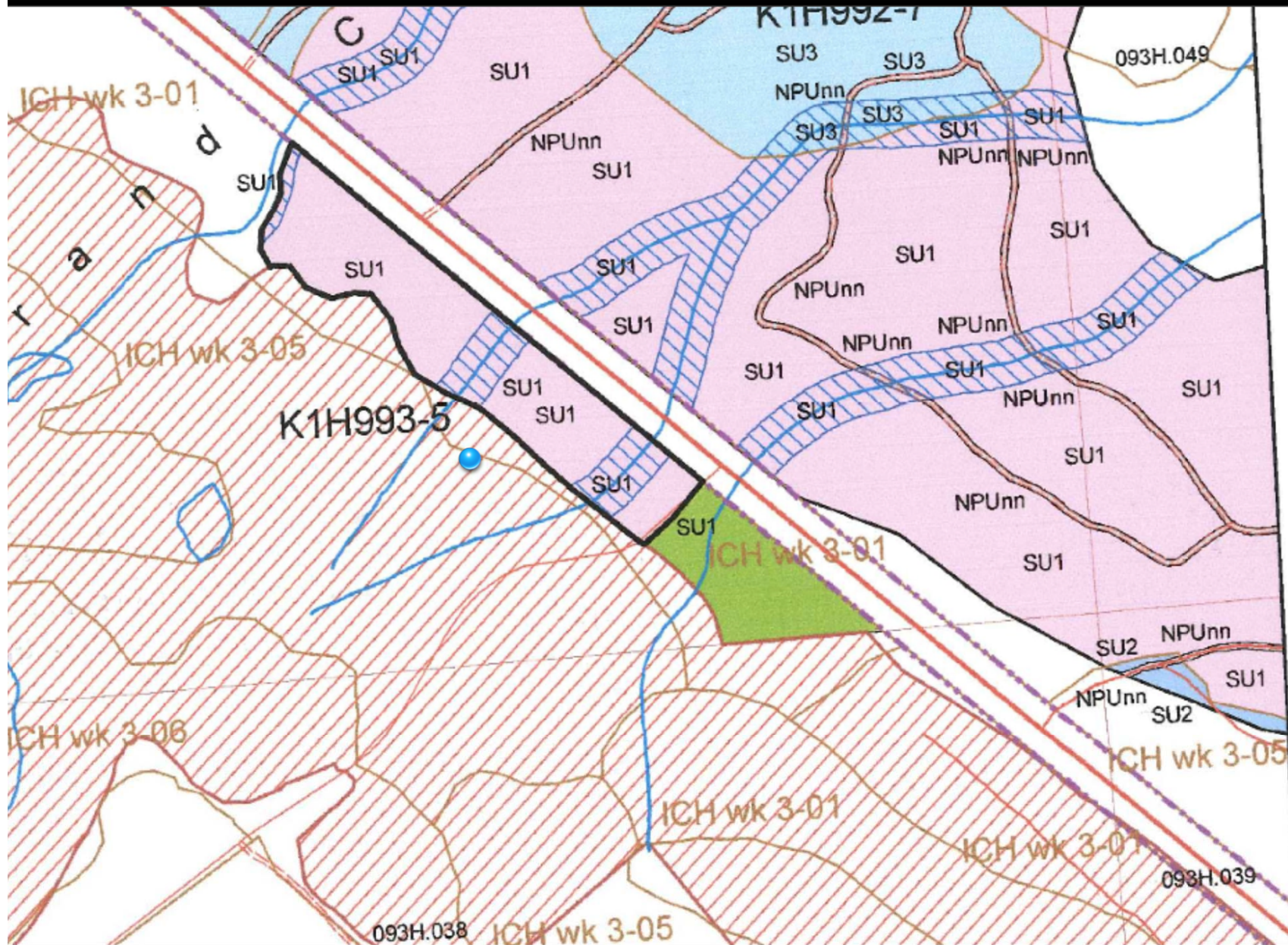
10:45 AM

87%

Maps

993-5 georeferenced

24. 



947541, 1370346



25.



26.



27.

Water Level

Leakage



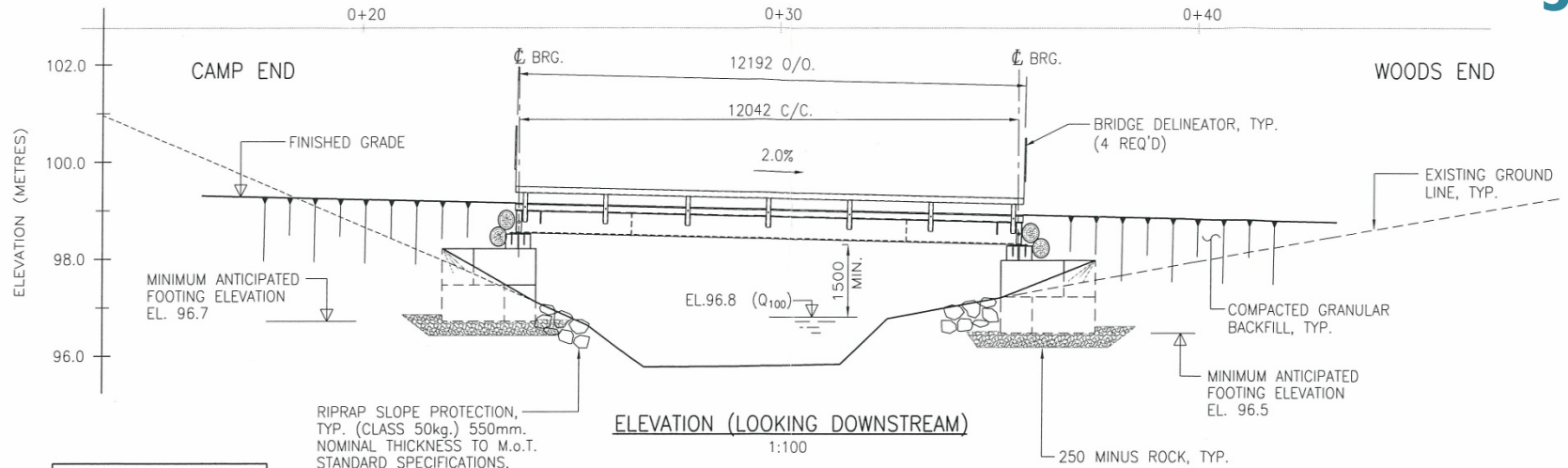
28.





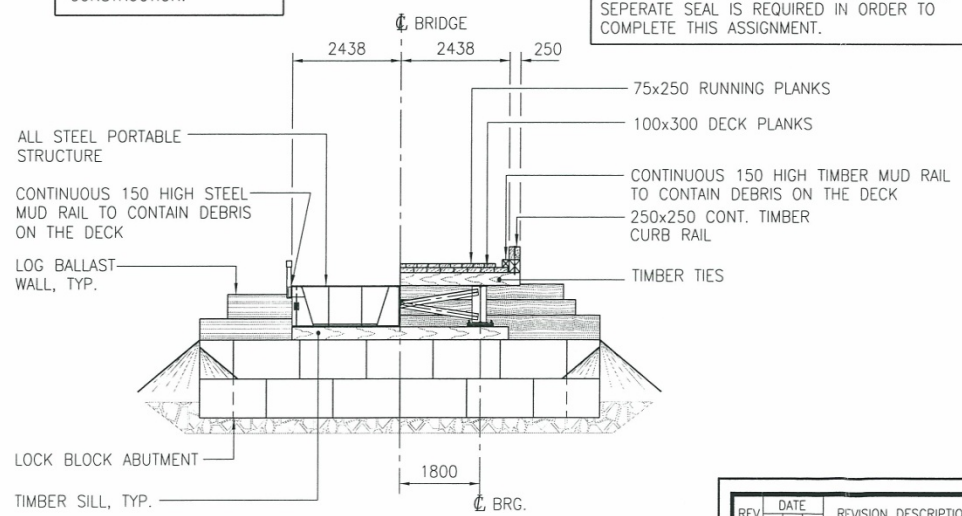


AUTOCAD DRAWING No. 22092501



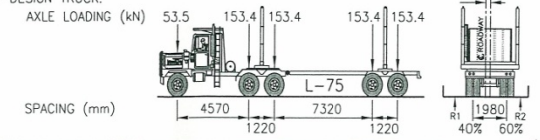
NOTE:
EXTENT OF LOCK BLOCKS TO SUIT SITE CONDITIONS ENCOUNTERED DURING CONSTRUCTION.

NOTE:
THE ENGINEERING SEAL APPLIED TO THIS DRAWING REFERS TO THE ENGINEERING CONCEPT ONLY. DETAILED ENGINEERING DESIGN UNDER SEPERATE SEAL IS REQUIRED IN ORDER TO COMPLETE THIS ASSIGNMENT.

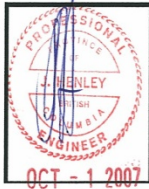


NOTES

1. FOR INSTALLATION BY OTHERS NO RESPONSIBILITY CAN BE ACCEPTED FOR WORK BY OTHERS.
2. FREEBOARD HEIGHT REQUIREMENT SHOWN REFERS TO UPSTREAM FACE OF BRIDGE.
3. NO GEOTECHNICAL INVESTIGATION HAS BEEN UNDERTAKEN. FOUNDATION REQUIREMENTS MAY CHANGE TO ACCOMMODATE ACTUAL SITE CONDITIONS.
4. GUIDE LOGS OMITTED AS DIRECTED BY POPE AND TALBOT.
5. DESIGN: CAN/CSA-S6-88 (MODIFIED).
6. LOADING: BCFS L75 (68,040kg. G.V.W.) e=400, DIST.=60/40.
7. FATIGUE: 500,000 CYCLES. BCFS L75 (136,090kg. G.V.W.)
8. STEEL: CSA G40.21M GRADE 350AT CAT. 3 (PLATE) GRADE 350A (SECTIONS) FABRICATE GIRDERS AS FRACTURE CRITICAL MEMBERS.
9. WELDING: CSA W59 6 F.W. U/N. X-RAY TENSION FLANGE BUTT WELDS, FIELD WELDERS CERTIFIED TO CSA W47.
10. HARDWARE: GALVANIZED CSA G164, BOLTS ASTM A307 GALV.
11. TIMBER: D/FIR ROUGH SAWN No.2 OR BETTER, UNTREATED.
12. DESIGN TRUCK:



REV	DATE	REVISION DESCRIPTION	ENG	DWN
Y	M	D		



POPE + TALBOT
BOUNDARY TIER DIVISION

DEADEYE 4700 0+813 BRIDGE

PROPOSED GENERAL ARRANGEMENT

Associated Engineering

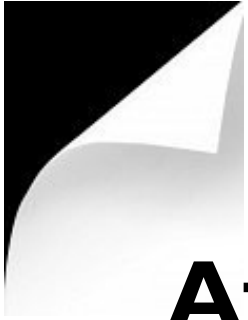
DESIGN: R.K.	JH
CHECK: J.H.	
DRAWN: R.V.	
DATE: OCTOBER 2005	
SCALE: AS SHOWN	
JOB No. 012209	2209-SK-2501
DWG. No.	

X-REF. ATTACHMENTS: NONE



33.





After the Fieldwork

- Analysis and interpretation of information.
- Completion of an Exit Package.

34.



Forest
Practices
Board

Analysis




Final Steps

- After the exit meeting, a draft report is completed
- Auditee reviews the draft report,
- Adjustments may be made
- If there are potential issues, the auditee gets an opportunity for representations
- Finally, the auditee is provided a report, then it is publicly released.

35.

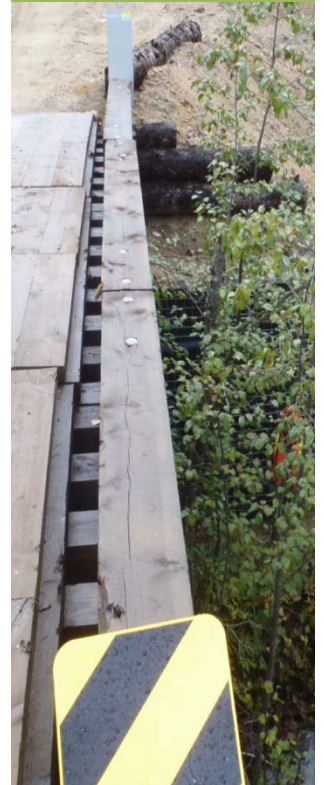


Reporting

- 
- As a licensee, you are taking on the responsibility of properly managing a public asset, according to the laws of the Province.
 - Do the right things on the ground and you will have no concerns when you get that call informing you that your licence has been selected for a Board audit.

Conclusions

36.



Forest
Practices
Board

What to Expect During A Board Compliance Audit

A guide for holders of woodlot licences, community forest agreements, forestry licences to cut, non-replaceable forest licences, First Nations woodland licences, as well as timber sale licence holders



**Forest
Practices
Board**

JUNE 2014

37.



**Forest
Practices
Board**