

Slocan Integral Forestry Cooperative



SIFCo



WHAT IS INTEGRAL FORESTRY?

“Integral forestry” means:

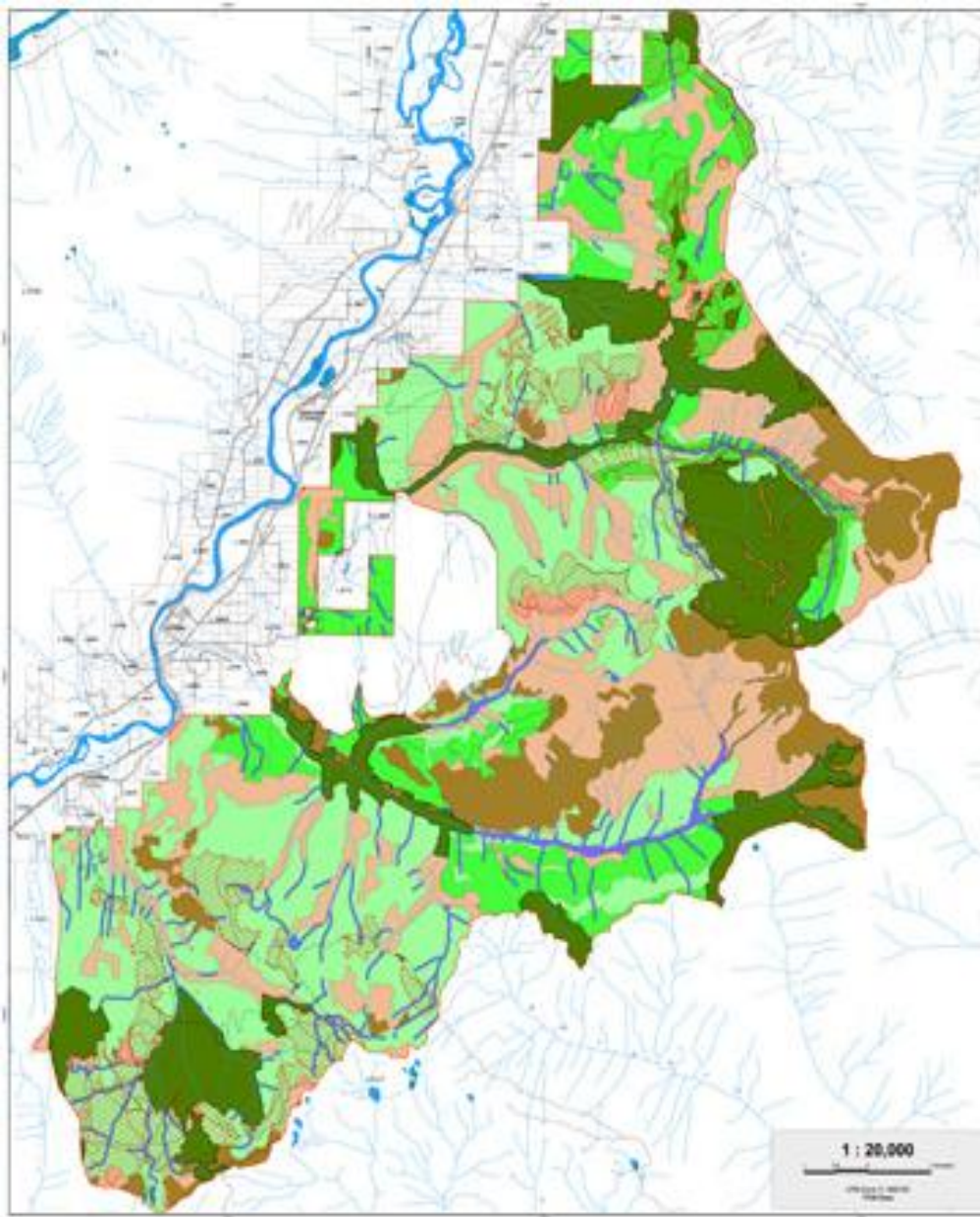
- Residents hold diverse perspectives and value systems in relation to the forest that surrounds them.
- These perspectives and value systems are guided and influenced by a mix of social, economic, scientific, spiritual, psychological, cultural, political, historical and institutional lenses.
- Each of these perspectives is valuable and pertinent and must therefore be considered into solutions that will work for all.
- By including and building upon these perspectives solutions found will be more complete and viable in considering how the community and the forest can interface.

2. Forest practices that first determine the ecological limits to human uses of a specified land area, and then, given these limits applies management strategies that will maintain a fully functioning ecosystem over time.
3. Implementing management strategies that consider humans as part of the ecosystem and that aim to improve social conditions such as local employment levels, community stability, local economic opportunities, and respect and understanding among residents.

OVERVIEW of 2009-2010



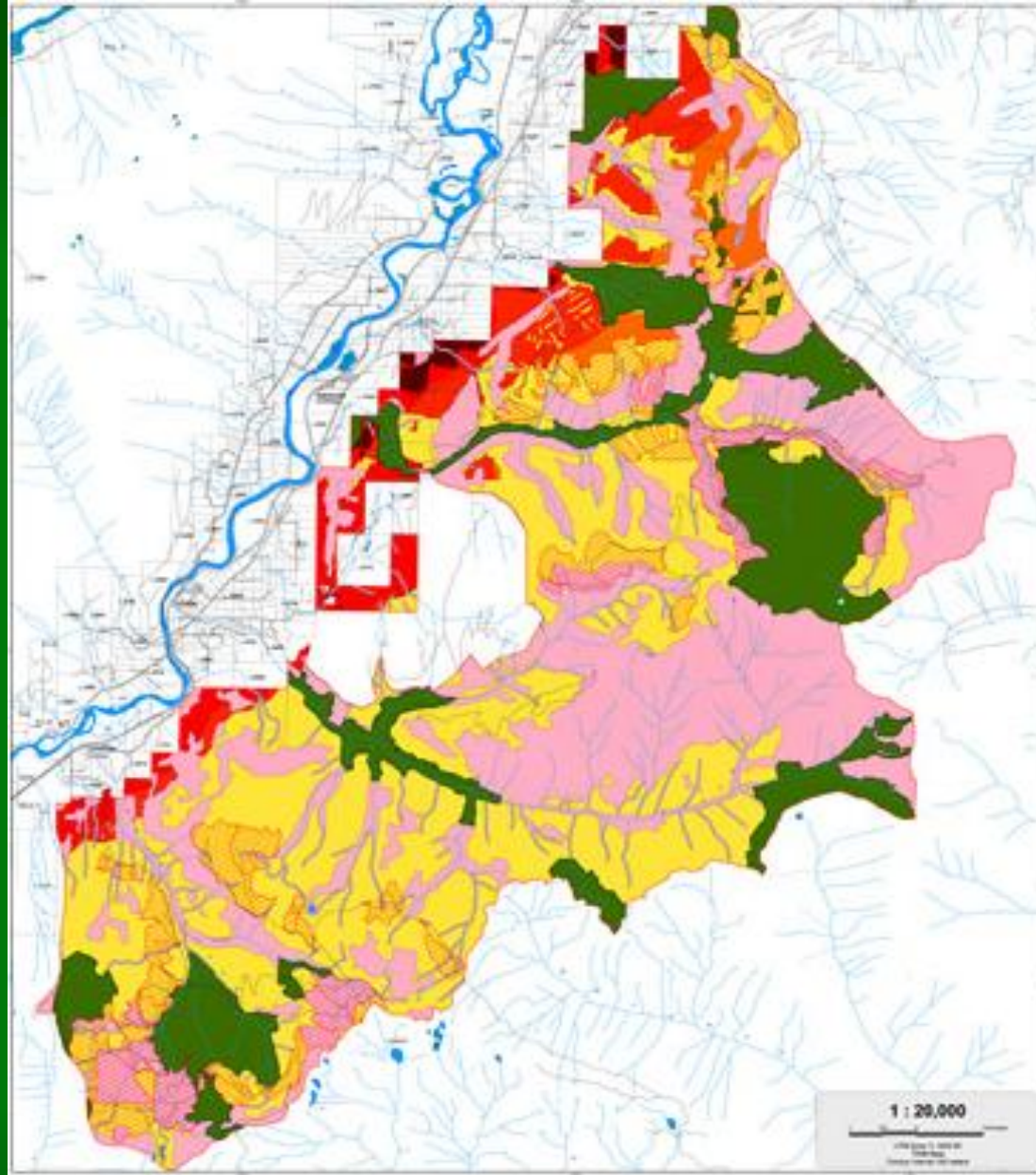
Landscape Level Plan



SIFCo Pedro - Winslow - EACT Unit
Terrain Stability and Ecological Sensitivity Interpretations



Wildland Urban Interface Mapping Project



SIFCo Pedro - Winlaw - EACT Unit
Wildfire - Human Interface
using a Permaculture Perspective



SIFCo's

Wildland Urban Interface Project

The Challenge





Before



After

The Results



The Results



SIFCo's
Invasive Plants Project

The Challenge



The challenge takers



The results:







Before



After

SIFCo's / RMRA
Bannock Point Recreation Site Project





Bannock Point Recreation Site British Columbia

For Everyone's Safety and Equipment



- 1. Use proper technique when using equipment.
- 2. Do not use equipment if you are unsure of its use.
- 3. Do not use equipment if you are injured or ill.
- 4. Do not use equipment if you are under the influence of alcohol or drugs.
- 5. Do not use equipment if you are wearing inappropriate clothing.
- 6. Do not use equipment if you are wearing inappropriate footwear.
- 7. Do not use equipment if you are wearing inappropriate eye protection.
- 8. Do not use equipment if you are wearing inappropriate headgear.
- 9. Do not use equipment if you are wearing inappropriate gloves.
- 10. Do not use equipment if you are wearing inappropriate socks.
- 11. Do not use equipment if you are wearing inappropriate shoes.
- 12. Do not use equipment if you are wearing inappropriate pants.
- 13. Do not use equipment if you are wearing inappropriate underwear.
- 14. Do not use equipment if you are wearing inappropriate bras.
- 15. Do not use equipment if you are wearing inappropriate bras.



© 2014 BC Recreation Sites and Trails Society
All rights reserved. No part of this publication may be reproduced, stored in a retrieval system, or transmitted, in any form or by any means, electronic, mechanical, photocopying, recording, or by any information storage and retrieval system, without the prior written permission of the BC Recreation Sites and Trails Society.







Logging
Hewitt Mine Road 2010










www.sifco.ca
office@sifco.ca

A vibrant, multi-colored nebula, likely the Ring Nebula, is the central focus of the image. It exhibits a complex, ring-like structure with intricate filaments and a rich palette of colors including deep reds, pinks, oranges, and yellows. The nebula is set against a dark, star-filled background. Numerous stars of various colors, including bright white and yellow stars with prominent diffraction spikes, and smaller blue and orange stars, are scattered throughout the field of view. The overall scene is a rich and detailed representation of a star-forming region in space.

**Lets put everything
into perspective!**